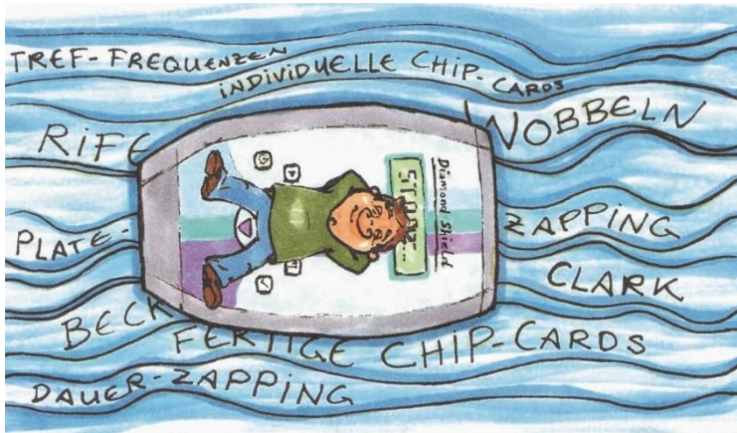


Institute for Bioenergetic Research

Gentle Therapy with Biofrequencies

Simple effective therapy
with Diamond Shield chipcard programs



**eBook – 14th edition 2025
All rights reserved**

ISBN 978-3-00-0379-26-0

**© 2025
Institute for Bioenergetic Research**

Attention!

This book should not replace the diagnosis and therapy control from any doctor or a non-medical practitioner! Although the outcomes with the Diamond Shield Zapper and the electrical frequencies are impressive – even with very heavy and chronic diseases – this book is not intended to replace a controlled medical therapy. The names of the programmes are recommendations based on the extensive practical experience of frequency therapists and not concrete claims of efficacy.

Institute for Bioenergetic Research

All rights are reserved, especially the right of proliferation, propagation and translation. No part of the work is allowed to be reproduced (by photocopy, microfilm, internet or another procedure) without a written authorization of the Institute for Bioenergetic Research or be saved, processed, propagated or proliferated under the usage of electronic systems.

Published by:
Institute for Bioenergetic Research
Rue de Damas, Imm. Paladin, 4. Stock
Beirut – Baabda
Lebanon

Contents

Introduction: Why a ChipCard Info-book?	9
The Diamond Shield frequency technology	11
Help for self-help.....	11
Diamond Shield basic programs	17
ChipCard VAG.....	23
TCM-ChipCards according to Baklayan	25
ChipCard AIM	25
ChipCard Müde	28
ChipCard Mood	32
ChipCard SD.....	35
ChipCard SEH.....	42
ChipCard Slim	48
ChipCard Tum.....	57
ChipCards for harmonization of functions.....	61
BrV – Bronchial mucus	62
Cel – Cellulite.....	63
DaFl – Improve intestinal flora.....	64
DaFu – Improve intestinal function	65
Durch – Diarrhea	66
Hae – Hemorrhoids	67
LeFu – Harmonize liver function	68
LV – Lung volume	69
MÜ – Stomach acidity	70

NiE – Kidney detoxification.....	71
NUV – Food intolerances.....	72
PB – Prostate conditions.....	73
RB – Irritable bladder.....	74
RzH – Irritant cough.....	75
ChipCards according to Baklayan.....	77
4W (Four Walls).....	77
A (Asthma).....	79
Akn (Acne).....	84
All (Allergy).....	85
AR (anti-smoking).....	87
ASP (Aspergillus).....	89
BaW (tapeworms).....	90
BB (high blood pressure).....	91
BiBlo (bioenergetic blockades).....	93
BO2 (Borreliosis/Lyme disease 2).....	96
BR (Bio-regeneration).....	98
CAN (Candida).....	100
CLST (Clostridia).....	102
Crystal.....	104
CV (Corona).....	107
DB (Diabetes).....	108
DS2 (Diamond Shield).....	110
DTX (Detox).....	111
EBV (Epstein Barr Virus).....	115

EG (4 flukes)	117
EMT (Endometriosis).....	119
FVE (Result of emotions).....	121
GewAbn (weight regulation).....	122
HB (Helicobacter)	124
He (Heart).....	125
Hep C (Hepatitis C)	126
HNO (Ears-Nose-Throat)	128
HSX (Herpes simplex)	130
IM (Immune modulation).....	132
ImPar (Immune system parasites)	134
ImVir (Immune system viruses)	136
KON (Concentration).....	138
L (Liver).....	140
Lu (Lungs)	142
LY (Lymphatic drainage).....	143
Ma (Stomach).....	145
MIG (Migraine).....	147
Mil (Mites).....	149
MSt (Menstrual Disorder)	150
Multi.....	151
Ni (Kidneys)	153
PaReg (Regulation of the pancreas).....	154
Piggy	156

Pr (Prostate).....	158
Rh (Rheumatism)	160
Sch - T (Pain-Program analog TENS)	161
Schu (Schumann frequency)	163
Tin (Tinnitus)	164
Wz (Warts)	165
Z (Teeth).....	166
ChipCards according to the five elements.....	169
New breakthrough in electrical frequency procedure (Zapper)	176
Index	180
Recommended literature	186
Masthead	187
Adresses.....	187

Introduction: Why a ChipCard Info-book?

Dear Reader,

At the beginning of every change you will find information and new knowledge. Probably, the wish for a better health and a higher quality of life has already induced you to undertake a change in your life. For this reason we are glad for your interest in the “ChipCard Therapy Program”, which the Institute for Bioenergetic Research would like to present and explain to you with this brochure.

The focus of the Diamond Shield frequency technology is on the direct application of frequencies. Independently of whether you already have theoretical knowledge or practical experiences in the field of biofrequency technology or not, a special frequency developed for your health issue or your indication can work out highly effective for your organism and therefore support you actively on your way to obtain a higher quality of life.

To facilitate your detailed search to a certain topic in this brochure, we structured the frequency programs for every ChipCard with regards to their content and arranged them in (german) alphabetical order. According to the headings starting from A like Asthma bis Z like Zähne (Teeth). You will rapidly recognize your topic in form of your health issue and therefore receive a link to the content of your particular ChipCard.

If the Frequency Technology is still new or unknown to you so far, we would like to recommend reading through the whole book, to consequently approach this topic in a practical use.

For more background information about frequency therapy and its possible applications I would warmly recommend to you the books “*Gentle Healing with Harmonic Waves – simply zap your Health Problems away!*” and “*Gentle Self-Healing with harmonic waves – A Practical Manual*”, with whom I would like to pass on my wealth of experience and my fascination of frequency therapy.

Make use of the free spaces in this info-book for your own notes, questions and annotations that may appear while you are reading this book. Get in contact to the person handing this info-book out to you. Contact this person and talk with her or him about your questions and concerns. This person will surely help you or in case of doubt can refer you to another adviser for further examination.

Healing Frequency Library online

I am also very pleased to recommend **healingfrequency.com**, an outstanding online library where you will not only find a lot of additional information about the Zapper application, but also an extensive database with frequencies and ready-made ChipCards. The frequencies according to Dr. Hulda Clark and Royal Raymond Rife were supplemented with valuable additional information on symptoms and holistic contexts. All ChipCards in this book and many others can be stored directly from this library to a ChipCard. All you need is a USB memory stick and empty ChipCards. With this platform, creating your own ChipCards is child's play, and I can warmly recommend it to interested users.

Book: Frequency Compendium

You can also look up the collected frequencies according to Rife and Clark in the Frequency Compendium II (*Die Frequenz-Fibel II – Ein Kompendium der Frequenzen nach Rife und Clark*). Here, too, you will find the frequencies clearly arranged according to indications, including a detailed search index. The extensive texts are interesting and understandable for both therapists and users. And the proposed settings have been optimized for the Diamond Shield Zapper series.

The basis-device for every single ChipCard with the corresponding hardware is the Diamond Shield Zapper IE EMS, which we would like to present you in this brochure before listing each ChipCard program. Thereby we would like to provide certain fundamental information on the Diamond Shield frequency technology in general as well as on the impact of the application of the frequencies. In this way we will illustrate why they can be used so effectively for this kind of therapy.

Also important to be mentioned in this info-book are the so-called additional measures, such as an adequate drinking water supply or a deacidification treatment for example, which will also support the Biofrequency Therapy and accelerate their positives effects.

Besides the possibility to use individually applicable ChipCards, the Diamond Shield Zapper IE EMS already disposes in the device standard integrated basic programs. In a short overview we will first present you these frequencies and their possibilities of application.

Finally, I would like to wish you much pleasure while reading this book. May it provide you with the exact information that you will require to support you on your further way.

Sincerely,

Alan E. Baklayan

The Diamond Shield frequency technology

Help for self-help

The programs contained in the Diamond Shield IE EMS have been developed according to the laws of Harmonical Frequency Therapy according to Baklayan and are used by most therapists as such. The Harmonical Frequency Therapy according to Baklayan works with micro currents, regulates and balances meridians and individual acupuncture points.

Some therapists use certain frequencies according to the principles of Dr. Clark and Dr. Rife. According to these therapists, certain pathogens can be specifically attenuated or killed. This is of course not scientifically recognised.

Please note that this can be done with any frequency generator available on the market besides the Diamond Shield IE EMS, the Diamond Shield Professional IE EMS and the Diamond Shield Crystal IE EMS. This has nothing to do with the intended use of the Diamond Shield according to the manufacturer, but is a recommendation of a whole series of therapists, which we pass on.

The Diamond Shield frequency technology is based on the function of oscillations as information carriers.

Its principle of action can be illustrated by the example of a soprano who, through her singing, causes a glass in her vicinity to burst: just as the glass breaks because the sung tone corresponds exactly to the frequency of the glass, with the aid of frequency technology germs that have settled on different organs within the human organism can be weakened or smashed only by confrontation with their natural frequency.

Subsequently, the immune system itself can combat and eliminate the pathogens responsible for diseases and pain.

The oscillation programs of the Diamond Shield devices are effective for both chronic and acute pain caused by stimulation current. Even if their effect was not recognized so far by the academic medicine, the Diamond Shield technology corresponds with its entire spectrum to the results of the newest scientific researches, which suggest for example within pain therapy (ChipCard Sch-T) both an interruption of the attraction conduction, as well as a simultaneous stimulation of the body.

All programs of the Diamond Shield Zappers IE EMS can be controlled after a short briefing, thereby a safety mechanism integrated in the device blocks sudden current increases.

The device should, under all circumstances, have a grounding or you should ground yourself during therapy. Naturopath Baklayan has found out that very

long frequency applications generate radicals due to the current, which do not form as soon as you ground yourself during the application. Grounding is very important, don't refrain from it. Attention: The Diamond Shield Zapper IE EMS works with impulse discharge, therefore it is important to ground yourself during zapping only via the grounding cable, but not e.g. to sit barefoot in the garden, otherwise the impulse discharge will be bypassed. Earthing in the garden or on the beach *after* zapping is advantageous.

Additional information on the principle of operation of the applied frequencies

As already mentioned in the previous text, each organism is constantly sending out certain characteristic frequencies. Therefore highly developed life-forms emit correspondingly high characteristic frequencies. Also the bandwidth with which the vibrations are sent out increases depending on the developmental stage of the organism.

When the microorganisms are exposed to an electrical current with the average value of their own frequency, they will be debilitated. To provoke such a reaction of intolerance in the microorganisms, it is just enough to have an alternating current flow of only a few volts, produced by a frequency generator. With this easy as well as advanced procedure, a weakened body can be supported and very effectively stimulated for self-help.

The application of the biofrequencies is divided in two groups, which are essentially different in their application and their mode of operation – harmonizing and defeating.

- 1.) The first four programs are supporting programs according to A. E. Baklayans Harmonical Frequency System.
- 2.) The universal frequencies in accordance with Dr. Hulda Clark (7-20-7-20-7 and Constant Zap), involve frequencies with a broad impact; their functional principle can be metaphorically compared to a shot gun: The wide dispersion of the frequencies can support the whole weakened organism. The application of these universal frequencies can be useful for beginners or if you don't know which particular frequencies your body currently needs.
- 3.) All specific frequency programs contain special high frequencies which act as a riflescope against certain pathogens and can debilitate or kill them. Such a frequency makes the agent, which is causing the complaints, oscillate exactly in his own frequency and precisely hits him like a single ray of light.

For more detailed information to the mentioned bio-frequencies we would like to recommend to you the books "*Gentle Healing with Harmonic Waves* –

simply zap your Health Problems away!" and "*Gentle Self-Healing with harmonic waves – A Practical Manual*" by A.E. Baklayan, as well as the Frequency Compendium II with Clark and Rife frequencies. Suggestions for additional literature can be found in the detailed description of some of the ChipCards.

Additional measures to support the treatment

If possible, take the recommended supplements. Information sheets on the products with information worth knowing about the ingredients can be obtained from the sales department or your therapist.

We are consistently convinced of the effectiveness of the Diamond Shield frequency technology and its positive effects. Nonetheless at first there can be certain light consequences as reactions to some of the applications of the Diamond Shield like headaches, tiredness or fatigue and in some cases, a temporally initial aggravation of the symptom will become noticeable. These reactions appear in cooperation with the initiated detoxication process of your body during the treatment. This can be clearly demonstrated by the experience in practice. The now vacant toxins can primarily overcharge the self-regulation of the body. Especially for multi-allergic people and patients who suffer from extreme over-acidification, such signals of the body can be shown.

- 1.) Reduce the duration of the treatment and begin for example with a treatment period of three times 60 seconds. Increase this time only very moderately.
- 2.) Take actions for the deacidification of your body.
- 3.) Support the process set in motion by the therapy by drinking at least two liters of water every day. We recommend a high impedance water for example Plose or osmosis water.
- 4.) Try to stimulate all ways of excretion through which the toxins can be channeled out of your body.
- 5.) Pay attention to your daily bowel movement. Support irregularities through laxative teas, stimulating herbal extracts or enemas or build up your intestinal flora.
- 6.) Take a shower more often as usual to stimulate the excretion of toxins through the skin.
- 7.) Move moderately until you realize that the sweat production begins.
- 8.) Perform a cleaning of the liver.
Please find a detailed instruction on the liver cleanse in the book A. E. Baklayan - "*Parasites – the Hidden Cause of Many Diseases*".

A. Unexpected side effects

For dealing with the consequences such as wild dreams, headaches, tiredness, fatigue or the appearance of chronic infections we recommend you the following supportive measures:

- 1.) Suspend the zapping until the reaction reduces.
- 2.) Restart the zapping again and increase the treatment time gradually: Start 1 time 1 minute on the first day and increase the time slowly with 1 time 2 minutes on the second day and 1 time 3 minutes on the third day, etc.

If during this gradation you notice an unpleasant reaction, keep the dosage from the previous day, until the reaction decays again.

Should all the symptoms get worse in extreme reactions, it can be assumed that one out of the five regulation blockages is responsible, which must first be resolved separately before you continue with the treatment.

According to absence of research, we advice the patients fitted with a heart pacemaker not to use the Diamond Shield treatment.

We also recommend pregnant patients to avoid the usage of the Diamond Shield application. Regarding this, there also are no clinical examinations available, because such studies cannot be undertaken due to ethical reasons.

However, some reports of pregnant patients must be taken into considerations that, according to their own statement, have used the Diamond Shield without experiencing any negative effects for themselves or their unborn child. Rather, these women report that both of them with the appropriate application got significantly better. These statements make sense insofar as the detoxication of the mother's body also improves the living conditions for her developing child.

B. Recommendations for deacidification of the body's organism

- One day a week, exclusively eat a vegetable broth.
- Drink two cups 7x7 herbs tea daily.
- Take 3 times daily before meals 15 drops of Mineralvit Gold
- At night before going to bed take 4 tablets of Mannayan Mineral salt.
- Take alkaline baths regularly.
- Take twice daily before meals two drops of Lactisol.
- Completely avoid any type of sugar, alcohol and wheat flour.

C. Drinking habits

A regular detoxication is a fundamental prerequisite for the body to maintain upright its innumerable vital function sequences. This natural detoxication on

the other hand can only take place if the body is daily supplied with a sufficient amount of water.

Only so-called "unbound" water fulfills the premise that waste products can be bound and thus eliminated by the body.

A water molecule, which is, however, already bound to other materials, such as in the case of mineral water in minerals, has in its structure no further binding capacity and thus can also not bind any toxins itself. Unfortunately, this simple interrelation has not been found for a comprehensive recognition in any professional circles.

During the therapy with a Diamond Shield device it is absolutely necessary due to the releases of toxic substances, regardless of the inclusion of other drinks to drink at least two liters of still water daily. The most unexpected consequences of a Diamond Shield treatment alone are attributable to the disregard of this simple rule.

Out of our water pipes, despite the strict drinking water regulations in relation to other countries, unfortunately comes no free and unbound water. Due to physical examinations based on the measured water resistance, our tap water contains a large number of dead bacteria, heavy metals and environmental toxins.

Similar studies in our practice with several hundred samples of tap water from different households provided us with a clear result: In each sample there could be detected a load of heavy metals.

From this point of view our tap water has quality deficiencies. However, as already mentioned, it is absolutely necessary to support a Diamond Shield therapy with the sufficient absorption of high-quality water with a correspondingly high resistance value. You should switch to a water which is processed through a reverse osmosis device or to Plose spring water from the South Tyrolean Alps. Among of all available waters this water contains the highest resistance value. Also make sure that the water is bottled in glass bottles but not in plastic ones.

The detoxication capacity of Plose water is, in relation to conventional tap water, ten to twelve times higher. Water which is produced by a reverse osmosis device, measures even up to 30,000 ohm. The investment in such a device in a multi-member family is worth it. Drink two liters daily, even though if it will be difficult at the beginning. After about 6 weeks, your body will be adapted and will help you to obtain more vitality and joy!

More detoxication measures, in particular for cleaning the liver are described in detail in the book "Parasites – the Hidden Cause of Many Diseases".

[ADVERT]



Self-made chip cards for the most popular Zapper models in just a few minutes!



www.healingfrequency.com

THE NEW ONLINE LIBRARY FOR HARMONIC AND HEALING FREQUENCIES
Create your own, individual smart cards easily, fast and conveniently on your home computer!

Diamond Shield basic programs

Frequency programs, already installed on the Diamond Shield

Attention: It has been proven to stay earthed 50 minutes after the end of the program.

Diamond Shield - the protective shield for your health – 1-26* - 6:02 min.

The Diamond Shield is the most important among all integrated programs in the Diamond Shield Zapper IE EMS because it can regulate the energy level of all meridians and therefore negative influences will be harmonized. Because only unblocked meridians can maintain the immune system of the body, we recommend the Diamond Shield program for basic preventive compensation and / or prior to the application of subsequent ChipCards.

Find out more at www.diamondshieldzapper.com

Feel Good program - deep release – 1-8* - 14 min

Feeling good again and sleeping program

Therapy-supporting recommendations:

- Babuna Sleep, half an hour before going to bed 10 drops in half a glass of water

Relaxation program - just relax – 1-12* - 8:24 min

Attention, if the Feel Good program is not effective in insomnia, just try the relaxation program. It is important to stay earthed 50 minutes after the end of the program.

GS – 1-26* - 6:04 min

Analog to the Golden Stream program, which was developed by A. E. Baklayan (forerunner of the Diamond Shield program).

FI-M - *the standard program for influenza infections – 1-4* - 8:30 min*

This program for acute complaints can be run 4 up to 5 times in a row until a significant alleviation. In addition, we recommend to take high-quality natural vitamin C and antioxidants in acute cases or for prevention.

- Mannayan Vitamin C+, 1-2 Tabl. daily
- Zinc Mannayan Zink+, 2x daily 1 tabl., in acute case 1x5 tabl.
- Mannayan Vitamin D3+K2 Ultra+ 1x daily 1 caps. with 4000 IU
- Mannayan Antioxi+, 1x daily 1 tabl.

There is very positive feedback on ChipCard Piggy, which can be used if the Gr program does not bring the desired success.

In any case, include natural antiviral agents in the therapy:

- Mannayan Glucan+, 1x daily 1 caps.
- Takuna, 2x daily 8 drops
- Samento, 2x daily 8 drops
- Houttuynia , 2x daily 15 drops
- Mannayan Boswellia, 1x daily 1 caps.

Co-M- *Cold program – 1-5* - 8 min*

This program can be used for acute colds and complaints in the sinuses or in the area of the ears daily up to 4 times until a noticeable improvement occurs. In addition, we suggest you to get a nasal douche with a teaspoon of silver water.

Afterwards very important: stay earthed!

Therapy-supporting recommendations:

- Apply Condura Comfort drops locally and take 10 - 20 drops, keeping them under your tongue for 2 minutes.

Ba-M – *A specially Back-Program– 1-8* – 8 min*

Pa-M - *The pain program by Dr. Rife – 1-4* - 13 min*

This program is suitable for all kinds of pain and also helps in wound pain or pain after a radiation therapy. This program alternatively offers an application with adhesive electrodes.

Bo-M – Lyme diseases – For liberation of the Lyme disease – 1-15* - 39 min

You should not use this program at the beginning more than once per day with an intensity of 2.2 volts. You can then increase the voltage from day to day for 1 volt until each time you feel a slight tingling sensation. Reduce the voltage the next day when a too strong reaction on the frequency occurs.

We recommend sensitive users only to let through half program with the first frequencies to get started and the following frequencies gradually. In the case of a chronic illness it is important to take into consideration that a patient with Lyme disease infection often has complex secondary reactions. By a Lyme infection there can be formed autoimmune diseases and auto aggressive diseases. For chronic diseases and their consequences a BO-program application should be used very carefully and their parameters should be carefully weighed.

Additional applications: A Lyme disease is the cause of many neurological, rheumatic or other diseases associated with an immune deficiency. For their treatment the BO-Chip can be extremely helpful. In fact, in a Lyme infection, the so-called chameleon among all pathogens, dozens of symptoms can be found.

Therapy-supporting recommendations:

- Lyme disease often hides itself behind a load by synergetic coupled parasites. Test and treat these pathogens.
- In the BO-program there are frequencies integrated for all pathogens that may be responsible for the Lyme disease.
- Make sure to have a good balance.
- Practical experience showed that Samento in liquid form is very effective as an important additive to support the Lyme disease therapy. And also other extracts show effect against the borrelia:
 - Nutramedix Samento, 1x daily 8 drops
 - Nutramedix Stevia, 2x daily 30 drops
- A vitamin D3 deficiency should definitely be compensated to strengthen the immune system:
 - Mannayan Vit. D3, 1x daily 1 capsule or
 - Vitamin D3 intensive+, 1x daily 1 tablet or
 - Vitamin D3+K2 Ultra+

- If the standard Borrelia program does not lead to the desired result, the BO2 chip card should be tried with additional frequencies.
- Recommended literature: A.E. Baklayan - *Gentle Self-Healing with harmonic waves – A practical Manual (chapter Lyme disease and Epstein Barr)*

BK Blood Frequency - 3.92 Hz – 30 min

The program of the BK blood frequency specifically combats blood parasites. A current will be conducted through the arteries running at the wrist. For this the bracelets can also both be attached to one arm at a distance of about 10 cm. With its 3.92 Hertz the BK- Blood frequency by Dr. Beck lies clearly below the normally used high frequencies and is significantly more effective for this application.

Due to its compatibility with theta waves emitted by the brain, it invigorates the resonance system of the body without the provoking of stress. A BK-blood-frequency application should always be perceived as pleasant. Always adjust the intensity so that only a slight tingling sensation is noticeable.

The direct path of the current in the blood is the reason for the surprising success of blood electrification, in which the biologically effective current enters the organism via the arteries. The actual current flow alone can put blood parasites within the blood out of action. In this way electrified blood cells have a longer life. For this reason, so many symptoms and health problems can be resolved that no other remedy could find.

Apart from natural detoxication reactions of the body, blood electrification causes no side effects. Using the Beck program, many users have already been able to fulfill their tasks with more freedom and power.

To intensify the effect of the BK blood frequency we recommend you to take silver water and energized Noni juice about 15 minutes before the application.

7-20-7-20-7 - 33,3KHz - 3 x 7 minutes with 20 minute breaks

This basic program includes a universal frequency according to Dr. Hulda Clark. For more detailed information, we recommend you the book "*The cure for all diseases*" by Dr. Hulda Clark.

Constant Zapp - 33,3 KHz - 60 min

The Constant Zapp program also includes a universal frequency according to Dr. Hulda Clark and is to be used without a break.

Zappicator - 1 kHz – 30 min

It is possible to energize food using the Zappicator. It also removes toxins or solvents contained in food or cosmetics. The book “*The Cure for HIV and AIDS*” by Dr. Hulda Clark contains detailed application recommendations.

Plate Zapping - 29Hz - 30 min

You can use this program for the transmission of frequencies to an external plate, whereby the effect to the individual organs will be more precisely aligned and thus the corresponding application can be intensified.

EMS – 10 Hz – 1-2* - 40 min

The zapper contains 2 EMS programs with a runtime of 20 minutes each.

The EMS 2 program is mainly used for targeted muscle training - approx. 1 minute for each muscle area. You can place the electrodes specifically on the respective muscle. The intensity can be increased with the up arrow key.

The program generates pulses of 5 seconds duration with four-second pauses. During the impulses you can tense the corresponding muscle.

You can use the program twice a week. In order to avoid muscle soreness, the musculature needs pauses between the applications.

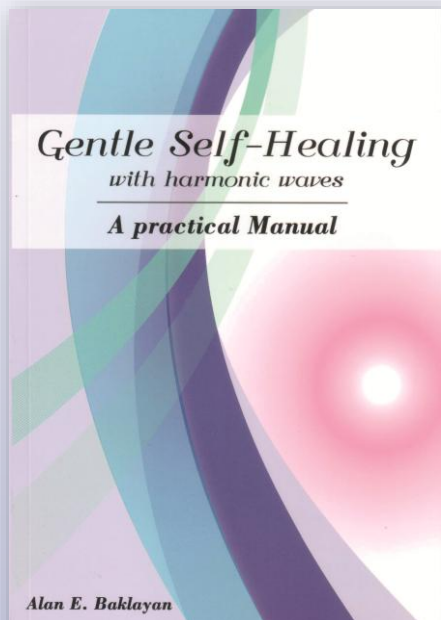
* Number of sequences that can also be run separately.

| ADVERT |

BOOK: GENTLE SELFHEALING WITH HARMONIC WAVES

A PRACTICAL MANUAL

From Hp Alan E. Baklayan



In this book, naturopath Alan E. Baklayan describes cases of patients who have been able to give significantly more quality to their lives with the help of zapper self-therapy, trying to work through as wide a range of symptoms as possible and thus present a variety of different ways of self-help.

In this practice book, Hp Baklayan would like to show that this can lead to amazing and pleasing results!

ISBN 978-3-00-051402-9

ChipCard VAG

Support for the parasympathetic nervous system

Running time 4 x 60 minutes

The chipcard consists of 4 sequences. It has proven itself to run each sequence for about 30 minutes over several days and observe which one "feels" best. The first sequence is the most commonly used.

The VAG chipcard can be used daily for 30 to 60 minutes. Ideally in the evening or before going to bed to reduce stress and initiate the relaxation phase.

For the VAG ChipCard, HP Baklayan has selected acupuncture points from the HEAL that support a balanced function of the vagus nerve. (The HEAL is the Library of Harmonical Frequencies, which enables frequency acupuncture without needles).

- Heart 6: palpitations, jumpiness, anxiety, tightness in the chest, constricted neck
- Heart 7: the Qi cardiale is sedative, calming, for restlessness, irritability, palpitations, anxiety, jumpiness, insomnia
- Heart 8: cooling, centering, taming yang, for fearfulness, depressed mood
- Heart 9: feeling of tension in the body, tightness in the throat, palpitations, mood swings

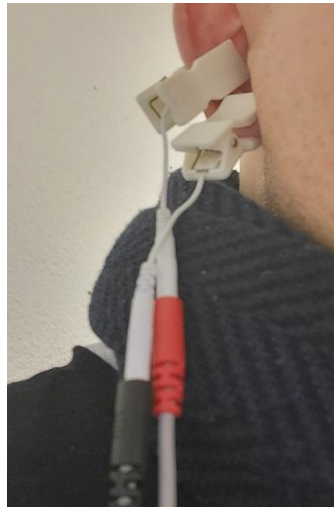
The VAG chipcard is used with special ear electrodes.



Electrode placement and application

The ear clips are applied on one ear, preferably the left, as follows:

- ✓ The ear clip on the red marked cable with metal contact on the inside of the ear cup.
- ✓ The ear clip on the black marked cable with metal contact on the back of the earlobe.



Apply just below the tingle threshold:

- ✓ Start program
- ✓ Increase intensity until you feel a slight tingling sensation and then reduce until it is just no longer felt.
- ✓ If there is redness of the skin at the point of contact or an unpleasant skin sensation, reduce the intensity.

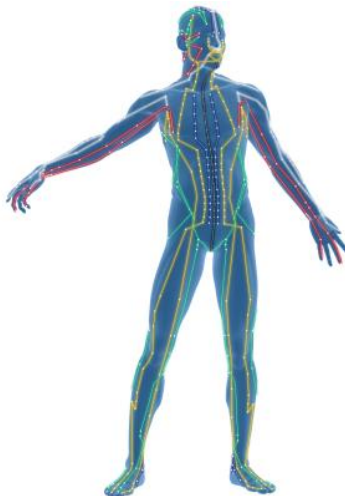
TCM-ChipCards according to Baklayan

New chip card generation

HP Baklayan came up with the simple idea of charging acupuncture points with their own frequency through micro currents when they are exhausted. In other words, when these individual mini-batteries are empty.

This gave rise to a new generation of ChipCards that can have a very impressive effect on the overall exhausted, overworked and chronically ill people of today.

The effect of this ChipCard is based on the calculations of the **Harmonical Frequency Application according to Baklayan**. In this system, Mr. Baklayan has mathematically calculated the exact frequency of each TCM meridian and then, within each meridian, the frequency of all acupuncture points.



ChipCard AIM

Protection against autoimmune reactions

Time 15:27 minutes

ChipCard AIM

For people who have a tendency to autoimmune reactions, there are three mechanisms that can be helpful in building protection against them.

The first mechanism is that microcurrents - and this is very well known - improve the flow properties of the blood and favourably influence the clots, rouleaux formations and other adhesions in the blood. There are numerous photo and film documentations that show an improved picture of the blood after the application of microcurrents. The capillaries are relaxed and by increasing the flow this can also be a protection against developing embolisms and varicose veins. This already would be a reason to zap oneself with microcurrents before and after, especially if there is a risk of an – also local - autoimmune reaction, as it often occurs after vaccinations.

The second mechanism is that, according to studies by Ngok Cheng¹, microcurrents increase the activity of the mitochondria by up to 500 %. This means that all functions, as well as the cell membrane potential, are repaired and the mitochondria work at a much higher level for a few hours, which of course builds up a very good balance and protection of the whole body.

The third and most important mechanism is that with the help of the Fractal Enhancer it is possible to directly calm an autoimmune tendency. The Fractal Enhancer consists of 1200 small fractals, which are laid out and calculated exactly in such a way that they create a right-spin swirling of the current. If

¹ Cheng N, Van Hoof H, Bockx E, et al. (1982). "The effects of electric currents on ATP generation, protein synthesis, and membrane transport of rat skin"

one now combines this effect with extremely deep microcurrents, this has a calming effect on the excessive right-spin rotation of the body's functions. In the body, right- and left-spin functions are always in balance. The right-spin functions are an expression of life. However, too much life force leads to allergies, inflammations and autoimmune reactions - so, if there are too many right-spin parts, it finally leads to autoaggressive tendencies against oneself.

These excess right-spin parts can be calmed down by running the AIM chip card at 0.4 volts.

Especially with expected reactions, such as hay fever, allergic reactions, vaccinations, extreme stress reactions, when congestion builds up, you can run the AIM ChipCard a few days before as a preventive measure and continue to use it daily for a week after the event. This should intercept the symptoms. If there are still residual reactions, for example to a stimulus, you can also run the ChipCard several times a day to calm them down.

This program runs at 0.4 volts. If something unpleasant is felt after the first run (for example in people with extreme autoimmune reactions), such as tension, run it again, this time at 0.1 volts, so that this reaction is also calmed.

Note: Do not increase intensity!

ChipCard Müde

Fatigue

Time 20:00 minutes

The ChipCard Müde (fatigue) consists of a special combination of precisely calculated frequencies of acupuncture points that control the symptom complex of exhaustion and fatigue. When these batteries are empty, they need to be fully recharged with electricity to address all aspects of fatigue.

Prerequisite

A prerequisite for the optimal effect of the Fatigue ChipCard is that there is no hypothyroidism. If a suspicion exists, please use the SD-ChipCard at the same time to regulate the thyroid function.

Effect of the CC Müde

Re-energising the body through the Müde ChipCard is done by activating very specific points:

- *Stomach Meridian*

He is responsible for the entire tone of the body. The selected points have a grounding and harmonizing effect and are used in classical acupuncture against tiredness and faintness, also against loss of strength or drowsiness.

They are also defined as effective for rapid exhaustion or even general fatigue. Then again points for great fatigue, weakness of the kidney vitality, constant freezing, strengthening of the defensive energy.

- *Spleen meridian*

The point selection increases the circulation of humors, i.e. all humors such as lymph, venous blood, bile juices. It is effective against tiredness and heaviness of the limbs.

- Bladder meridian

Furthermore, bladder meridian points are also activated. Here it is also about tiredness, exhaustibility, with a blockade in the chest and back, lack of vital warmth, frostiness, often a feeling of coldness and a tiredness that also emanates from the back.

- Liver meridian

Then special points of the liver meridian are activated. Here again the entire flow of juices is channeled. The point selection helps against tiredness, fatigue or coldness of the feet as well as against heaviness and tiredness that is felt in the feet.

The liver meridian belongs to the wood element and when the wood element is exhausted, it manifests itself similar to springtime lethargy.

Application

The ChipCard should be used daily for at least 3 weeks to regenerate and recharge these points. Within these first 3 weeks, the ChipCard can be used once or twice a day, possibly in parallel with the SD ChipCard.

Attention, the effect often only occurs the next day. This means that if you run these ChipCards once in the afternoon or early evening, the beneficial effect will not set in until in the course of the following day.

Supportive measures

Attention: In case of chronic fatigue, a good liver preparation should always be taken, which means, for example, Mannayan Derma-Clean L (Liver) 2x daily 1 tablespoon, as well as a bitter remedy to promote detoxication, such as Bitterstern 2x 10 drops daily.

Furthermore, a remineralization with the special mixture of Mannayan Mineral salt 2x 1 capsule, which supports the heart function through the unique potassium binding (potassium sodium tartrate) it contains and deacidifies at the same time. Then definitely a good vitamin B complex, preferably Mannayan B Aktiv+ once a day and of course Vitamin D3+K2 4000 IU per day.

Summary of the preparations

Mannayan Derma-Clean L (Liver)	2x 1 tablespoons daily
Bitterstern	2x 10 drops daily
Mannayan Mineral salt	2x 1 capsule daily
Mannayan Vitamin B Aktiv+	1x 1 tablet daily
Mannayan Vitamin D3+K2 Ultra+	1x 1 capsule daily

(Attention: Vitamin D3 in high doses is essential but should not be taken over a longer period of time without consulting your therapist).

The effect does not occur

If no effect occurs after 3-4 weeks with these preparations, there are underlying diseases that exhaust the body. This could be almost any illness, such as latent viral infections, focus disease, gastritis, stress, metabolic disorders, etc. Practically any chronic or acute illness can lead to constant fatigue, as is well known.

One load that we test for most often is the Epstein Barr virus. In this case, the EBV ChipCard should be used along with it - absolutely with the corresponding accompanying virus preparations, see description of the EBV ChipCard (E-book Gentle Therapy with Biofrequencies).

In the case of chronic insomnia or depressive mood, please first treat with the corresponding chip cards and remedies.

If the effect does not occur after another 3 weeks, we recommend to consult a good therapist and have a thorough diagnosis carried out.

Summary of application

MÜDE-CC	1-2x daily for 3 weeks
In case of hypothyroidism or suspicion.	1x daily SD-CC
In case of Epstein Barr load or if there is no improvement after 3 weeks	1x daily EBV-CC + supporting measurements according to ChipCard information

Further therapy blockades

Attention: Many prescribed pharmaceutical drugs have chronic fatigue as a side effect. Please read your patient information leaflets carefully. You should work with a good therapist to either replace the medication or treat the underlying conditions so that the medication is unnecessary.

ChipCard Mood

Depressive moods

Time 24:00 minutes

Today's enormous increase of depressive moods up to depressions is not least connected with the unbelievable increase of toxins, bioenergetic blockades, like electrosmog (Bluetooth, W-Lan, 5G, electric fields, etc.), stress and speed in everyday life and professional life.

Viewed holistically, this means that depressive moods can also be treated as a poisoning disease. Detoxication measures can not only support psychological therapeutic efforts, but in some cases even replace them. Therefore, a cleansing of primarily the liver, but also the intestines and kidneys is very important.

Prerequisite

It must be clarified whether there is an underactive thyroid gland (hypothyroidism), as this is often the case. Then the SD-ChipCard must be used in parallel.

Effect of the Mood CC

Spleen Meridian

As a representative of the functional circle earth (the center of man) some selected points of the spleen meridian. Strengthening of the balance and strengthening of the human. The points have the indications depressed mood, nightmares, fatigue, insomnia, heaviness of limbs.

Heart meridian

Representative of the fire element. According to TCM conception assigned to the emotion joy. The selected points are effective for sadness, heavy-hearted mood, depressive displeasure, phobias (fears), restlessness, irritability, anxiety, jumpiness, insomnia, large mood swings.

Small Intestine Meridian

Also in the transformational phase fire, it is the partner meridian of the heart. In the indications of the point selection we find mood disorders, fearfulness, gloominess, weakness.

Kidney Meridian

According to TCM, the site of the material basis of man. Suitable indications of the selected points are fatigue, hypersomnia, fearfulness, anxiety, depressive moods.

Gallbladder meridian

Gall bladder as a representative of the functional circle wood has much to do with suppressed anger. Indications of the selected points are depression tendency, tightness of the throat, stiffness.

Liver meridian

Also part of the functional circle wood. The liver stands for suppressed rage. Positive quality of the liver is friendliness. The suitable indications of the point selection are restlessness, sleep disorders, loss of appetite.

Application

Apply daily for the first three weeks and then once every 2-4 days.

Supporting measures

- FvE ChipCard
- Biblo ChipCard
- Nutramedix Avea
- For sleep (rhythm) disorders
 - Diamond Shield basic programs for well-being and relaxation
 - Use Diamond Shield basic program DS more often to balance all meridians
 - Mannayan Colloidal Gold 3x 1 tsp (no metal spoon)
 - L-tryptophan before bedtime (or Griffonia)
 - Nutramedix Amantilla, Babuna in the evening 10 - 20 drops
 - Mannayan Mineral salt
- Derma-Clean N (Kidneys)
- Derma-Clean L (Liver)

- Intestinal cleansing through
 - Mannayan Colo+
 - Mannayan Clean+
- In the case of hypothyroidism, the preparations recommended for ChipCard SD.

ChipCard SD

Hypothyroidism

Time 18:00 minutes

Thyroid ChipCard

In any person suffering from a chronic disease, hypothyroidism should first be ruled out.

The thyroid hormone T3 is indispensable for maintaining the electrical voltage of every cell in the body. The thyroid hormone T2 plays an essential role in the mitochondria, namely in the production of ATP. Mitochondria are our energy producers and the ATP represents the available energy itself. This connection alone among many shows how important a healthy thyroid function is.

Effect of the SD-CC

The effect of these Chip cards is based on the calculations of the Harmonical Frequency Application according to Baklayan. In this system, Mr. Baklayan has mathematically calculated not only the exact frequency of each acupuncture meridian, but also the frequency of each acupuncture point.

The SD ChipCard consists of a special combination of precisely calculated frequencies of acupuncture points that activate the thyroid gland. The results of its use on people suffering from chronic fatigue were more than impressive.

The basic idea of naturopath Baklayan is to recharge and activate exactly those acupuncture points that are responsible for controlling the thyroid gland. Incidentally, many of these points are located near the thyroid gland or on the meridians that cross it.

Hypothyroidism

Hypothyroidism is a common phenomenon that affects many people. It is routinely under-diagnosed. Conventional medicine looks at general laboratory values and only recognizes hypothyroidism when the values are significantly below normal.

Symptoms such as fatigue, exhaustion and a drop in performance are typical of latent hypothyroidism that is not recognized.

Typical symptoms of hypothyroidism are:

- Sensitivity to cold
- Cold feet and/or hands
- Fatigue, increased need for sleep, lack of motivation, lethargy
- Slowed reflexes
- Weakness of memory, depressive moods
- Weight gain and increased blood lipid levels (especially cholesterol, particularly LDL cholesterol may be elevated)
- Muscle weakness, stiffness and pain
- Cool and pale dry skin
- Myxoedema: Doughy swelling of the subcutaneous connective tissue, especially on the arms and legs and face. Affected persons appear "swollen".
- Brittle, fragile hair, increased hair loss
- Brittle nails
- Dry skin
- Hoarse, deep voice; slow, slurred speech
- Throat symptoms, sudden raspy voice without cold symptoms, difficulty swallowing, pronounced vomiting reflex, thickened tongue that is bitten frequently, intolerance of neck jewellery or clothing that constricts the throat
- Chronic constipation
- Possibly a goiter
- Fluid accumulation in the eyelids (eyelid oedema)
- Irregular menstrual periods in women, unfulfilled wish for child or reduced ability to conceive
- Reduction in sexual desire and potency in men

- In severe, long-standing and untreated hypothyroidism, slowed heartbeat, decreased and especially increased diastolic blood pressure (second blood pressure reading) may occur. The coronary vessels may calcify and cardiac muscle weakness or pericardial effusion may occur

If you are clearly suffering from more than three of the above symptoms, you should consider that you are living with mild to severe hypothyroidism.

By using the SD ChipCard, the difference in your overall condition will be immediately noticeable.

Procedure

- ❖ The SD-ChipCard should be used daily until the internal batteries are sufficiently recharged.
- ❖ On the first day: run it once.
- ❖ On the second day: If you do not feel any difference, you can run the ChipCard 2 or 3 times. If you already feel better, once is enough.
- ❖ After 3 days at the latest, one run per day should (usually) be enough.
- ❖ After one week, the thyroid function should have normalised due to the influx from the corresponding acupuncture points, so that you can now reduce the application to every other day.
- ❖ After another week, twice weekly application should be sufficient.

Application of the SD ChipCard

<i>1. day</i>	<i>1x 1 run-through</i>
<i>2. – 3. day</i>	<i>1x 1-3 runs</i>
<i>4.– 7. day</i>	<i>1x 1 run daily</i>
<i>from day 8</i>	<i>1x 1 run every 2nd day</i>
<i>from day 15</i>	<i>2x 1 run per week</i>
<i>after max. 12 weeks</i>	<i>1x 1 run per week</i>

For optimization, to increase the ion flow at the cell membranes, the intake of MineralvitGold is necessary.

What to do if the effect does not set in?

Attention! If the effect does not start or is always short-lived, this shows that the organism is so exhausted that it is not able to produce and store the necessary current.

In order to function properly, the thyroid gland needs trace elements, among other things, which are contained in the following preparations:

- Mannayan Poweriod+ (iodine) two to four capsules daily.
- M. My Glucofriend+ 1 to 2 capsules daily. Contains selenium, zinc and copper. There is often a selenium deficiency. Selenium is part of all thyroid diseases, as it is necessary for the formation of thyroid hormones. In Hashimoto's thyroiditis, it should be 200 micrograms daily.
- M. Deca-Mineral+ one to two tablets daily. Contains zinc and iron.
- L'Glutathione one to two capsules daily.
- M. Vitamin C+ one to two capsules daily
- M. Lugol's solution 3x 1 - 3 drops daily

Start taking Mannayan Lugol's solution with 3x 1 drop after meals with plenty of water. For taste reasons, it can be mixed in 1 tbsp yoghurt. If well tolerated, increase by 3x 1 drop daily to a dosage of 3x 3 drops daily.

For most people, this dosage will be quite sufficient to boost the function of the thyroid gland and the entire metabolism of the body. Your body will thank you for it and you will soon forget your exhaustion low.

Duration of cure

In the majority of cases it is necessary to take these preparations for at least six to eight weeks, together with ChipCard application twice a week to recharge your reserves. After a maximum of 12 weeks, you should continue to use the SD-ChipCard at least once a week and one capsule of each of the above preparations and 1 drop of Lugol's solution per day should be sufficient. If this is not the case, there is a blockage in your thyroid gland and you should see a capable therapist.

There is no hard and fast rule as to how long the maintenance dose should be maintained. If you feel fit and vital, you can stop the course and monitor your condition. As soon as performance drops again, you should immediately start the maintenance dose again. Do not wait until your batteries are empty again and you have to start all over again.

Application blockades

According to Hp Baklayan, if despite abundant use of the SD-ChipCard and the preparations the expected effect still does not materialize, severe blockades are present that hinder the function of the thyroid gland.

The most common blockades that are tested directly on the thyroid gland are:

- Heavy metal load
- Candida load
- Toxoplasmosis
- Mycobacteria
- Electromog, electrosensitivity or static electrical charges
- Functional disorders of the adrenal gland
- Chronic iodine deficiency

Again, a few notes for iodine deficiency:

- ❖ Iodine is obviously very important for thyroid function, but it also performs other functions, such as:
- ❖ Every cell that has secretion, which is almost every cell in the body, needs iodine as a transporter to move secretions out of the cell.
- ❖ Studies, such as the one by Guy Abraham, MD, show that most adults need 12 to 25 mg of iodine per day. Through normal salt consumption, we get only one-thousandth of what the body actually needs.
- ❖ Without iodine, stomach acid cannot be adequately produced. Without stomach acid, we become allergic to all the proteins that are not broken down into amino acids in the stomach. Including the proteins of wheat, like gluten, which can be one of the factors in gluten intolerance.
- ❖ Iodine helps detoxify fluorides.

Note: If you have hypothyroidism, you are usually only routinely prescribed levothyroxine T4. This is a synthetic thyroxine that only appears to replace the functions of T2 and T3.

For 12 weeks

M. PowerJod+	2 – 4 capsules daily
M. My Glucofriend+	1 – 2 capsules daily
M. Deca-Mineral+	1 – 2 tablets daily
L'Glutathion	1 – 2 tablets daily (à 500mg)
M. Vitamin C+	1 – 2 capsules daily
M. Lugol's solution	3x daily 1 – 3 drops
after max. 12 weeks	reduce to 1 caps. / tabl. each

Testimonial from a user, male, 55 years old

When I read through the symptoms concerning hypothyroidism, I could clearly recognise myself in several of them. And since I already owned a Diamond Shield, it was natural for me to try out the Thyroid ChipCard right away.

I was very surprised to feel a kind of activation in my body already after the first application, feeling extremely tired afterwards, one/two hours later. However, the next day, after sleeping on it, so to speak, I actually felt fitter than usual.

On the second day, I forgot to run the thyroid program and so on the third day, of course, I had the usual tiredness and fatigue again. This motivated me to try the chip card again. With the same effect, i.e. I again felt a bit vibrant and tired, but the next day I was a bit fitter again.

I was disappointed though that it didn't last long - after half a day I felt the usual exhaustion again. Then I thought about doing it more often, as

instructed, because the beginning of my state of exhaustion was practically decades ago. I then did the program twice a day and clearly felt the difference. That is, it had such a strong effect that I woke up very early the next day and could no longer sleep because I was already wide awake. I continued like this from then on, i.e. I used the SD chip card twice a day.

Nevertheless, the effect wore off after a few days. Although the effect was clear, which was very encouraging, on the other hand it could not last and therefore I decided to use the indicated formula as well, although I do not like to take so many preparations. As I wanted the effect quickly, I took the formula in relatively high doses, i.e. with the maximum doses given, and also continued to do the SD program once a day. It was then that the effect lasted very well in the meantime. I no longer have afternoon exhaustion, I am awake in the morning, I sleep better, the tendency to constipation is completely gone, I am more concentrated at work and other symptoms are clearly better.

I did the program according to this instruction and prescription for 3 weeks, but then got slack again. I got a bit fed up with taking so much and spending so much time on it. Due to various factors, I stopped again and hoped that the effect would last on its own.

But promptly, after three to four days I had all my previous symptoms back relatively quickly. Now I really understood and decided to do the cure consistently for 12 weeks. Although I gradually reduced the remedies a little and only did the SD-chip once a day, after 6 weeks I only did it every other day and then actually did it every third day as indicated.

The effect lasts fantastically and I stopped the cure after the specified time. I suspect that I will have to do this cure once or twice a year to maintain the effect, but that wouldn't be so bad, as my previous state of exhaustion and fatigue, which has lasted for decades, is no comparison to the small investment in time and preparations.

ChipCard SEH

Eyes

Time 30:00 minutes

The focusing of the image in the eye is adjusted, among other things, by the small muscles around the eye. This is also the explanation why the eyes of the stressed person (even the stressed child) become worse. When we walk around with tense necks, shoulders and facial features, right down to the scalp, it is not surprising that the small muscles around the eyes are also affected.

Other factors that affect the function of the eyes are always the many environmental toxins that accumulate in the eyes (aqueous humour and lens). It is my personal experience that especially solvents and heavy metals like to accumulate in the eyes in the course of life and then lead to degenerative diseases of the eye. This can often be counteracted by a thorough detoxication of the eye.

The eye also has a very sensitive metabolism and must be protected at all times. Thus, it is well known that certain substances must be present in high concentrations. However, due to the chronic lack of vital substances in the whole body, these high concentrations cannot be maintained in the eye. This leads to various degenerative processes.

The meridian points therapy

Finally, the breakdown of tension in all cell membranes in and around the eye is also responsible for the development of numerous diseases and signs of ageing. However, this can be counteracted by

activating all meridian points whose task is precisely to maintain the electrical tension in and around the eye.

This activation is the first step in restoring the entire function of the eye.

These meridian points include:

Here is a description of how the points that are activated work:

- Large Intestine Meridian

The SEH ChipCard stimulates a number of acupuncture points that are directly related to the function of the eyes, their muscles and cellular tissues. For example, the point selection of the large intestine meridian that clears vision. The large intestine meridian ends on the face near the eyes. The connection between short-sightedness and the muscles that are affected by shoulder and neck pain also becomes clear here.

- Stomach meridian

Then of course points from the stomach meridian. The stomach meridian starts directly under the eye and has a very intimate relationship with the eyes, so there is also an influence here that has a clearing effect on the whole vision. With the stomach points used, there is a connection with lacrimation, all kinds of visual disorders with the indication of eye diseases, conjunctivitis, short-sightedness and long-sightedness, colour and night blindness, inflammations and atrophies of the optic nerve, cataracts, up to unilateral paralysis of the facial muscles, twitching of the facial muscles and even tinnitus. With further stomach points swelling of the face, glaucoma.

- Small Intestine Meridian

Now continue to the small intestine meridian, which again supports the facial musculature with some points, because it ends there. Some of the points have a connection to the wood element. This represents liver and gall bladder and in Chinese medicine any eye symptomatology is always connected to the liver. You have to remember that. Here there are indications such as reddened eyes, veils in front of the eyes, up to nosebleeds, and again tinnitus. Also again the neck and headache, indicating tension in the head, as well as shoulder and back pain.

- Bladder meridian

After that the bladder meridian. It starts at the root of the nose and runs down the whole back to the little toe. From the root of the nose it runs over the crown of the head. There are several points there that have a deep relationship to the eye. Indications such as myopia, i.e. short-sightedness,

pain and redness of the eyes, strabismus, night blindness, atrophy of the optic nerves, retinitis, early stages of cataract, forehead headache, defective vision, clouded vision, lacrimation, eye redness, itching, pain, corneal opacity and twitching of the eyelids can be mentioned here.

Then it continues with points on the scalp that have dizziness and headaches, eye haze and again night blindness as indications. And some other points that stand for unbearable pain in the eyes, as if they were pulled out of their sockets. Also for short-sightedness and violent headaches.

Other points from the Bladder meridian mention headache, blurred vision, painfulness of the eyes, redness, again a tightening of the muscles and blocked nose and also haze in the eye, eye pain.

- 3-fold warmer meridian

Then there is a point selection from the triple warmer, which is responsible for the metabolic energy distribution on all three floors of the body, as well as hormonal control. The meridian ends very close to the eyes and temples and the point selection also has indications such as headaches, reddened eyes, weakened vision, facial twitching. Here you can see the same connections again.

- Gall bladder meridian

Then of course we have points from the gall bladder. Also on this meridian there are some points in the head area, the meridian starts exactly at the side of the eye. Because it belongs to the wood element, it has a very important (regulatory) function as far as the eyes are concerned. And here we also find such indications as eye diseases, veils before the eyes, night blindness, conjunctivitis, short-sightedness (myopia) and headaches. Furthermore watery eyes, blurred vision, veils in front of the eyes, upward turning eyes, seizures, spasms, paralysis, apoplectic symptoms - here you notice again that everything has to do with increased tension, up to back of the head pain.

- Liver meridian

Then we finally come to the liver meridian, which - as I said - represents the wood element with the gall bladder and has a direct connection to the eye. Here, of course, we can also look for some connections with eye diseases, such as visual disturbances, dizziness and general regulation.

Eyes and mitochondria

How sensitively the eye reacts to our metabolism is also shown by the fact that the eye has the highest mitochondrial density of the whole body. The body cannot afford the slightest fluctuations in this area. In the lens capsule, glutathione is just as highly concentrated as in the liver. This again shows the connection to the liver, which has been known in Chinese medicine for centuries. When exposed to light, the oxygen radicals in the eye increase. As an additional protection, it needs vitamin C - the eye water contains 20 to 25 times higher concentrations of vitamin C than the blood. It should now be clear to any layperson how important a supply of natural vitamin C is.

The high metabolic demands placed on the eye require special protective factors in addition to glutathione and vitamin C. These are tocopherols, i.e. vitamin E for the retina, carotenoids - vitamin A and beta-carotenes for the macula, as well as zinc and unsaturated fatty acids to neutralise the short-wave light rays. In the yellow spot, lutein and zeaxanthin are needed as filters. Lutein also has an anti-inflammatory effect and inhibits inflammation of the eye skin caused by environmental toxins.

Many eye diseases are not diseases of the eyes alone, but signs of massive nutrient deficiencies and biochemical malfunctions.

In glaucoma, vitamin C and glutathione are low. There are about 1 million glaucoma patients in Germany. 50,000 of those affected are blind and 1,000 more become blind every year. This need not be the case. With a sufficient supply of vital substances, many things could be delayed or even completely avoided.

Vitamin E with all 8 natural isomers (α -, β -, γ -, δ -tocopherol and α -, β -, γ -, δ -tocotrienol) should always be taken, coenzyme Q10 (3 to 10 mg/kg body weight), vitamin C, unsaturated fatty acids and a vitamin B complex. Several studies have shown the importance of micronutrients in macular degeneration. Especially zeaxanthin and lutein are absolutely necessary.

Supportive measures

As already mentioned, it is extremely necessary to have enough protection in the form of antioxidants, carotenoids and flavonoids, especially in the eye, because the entire function of the eye depends on them.

MANNASICHT+ contains an ideal combination - first of all vitamin E, one of the most powerful antioxidants of all - for the body, the eye tissue and its healthy functions.

Then it contains a lot of concentrated lutein, a carotenoid also found in vegetables such as spinach. This is also an antioxidant, it filters blue light so it can protect the retina somewhat from UV damage. According to studies, it can have a preventive effect against age-related degeneration of the macula.

The preparation also contains zeaxanthin. In the centre of the retina of the eye, the macula, almost only lutein and zeaxanthin are present. This is why these vital substances are so important for the health of the eye.

Blueberries are very rich in anthocyanides, which act on the tightness of the capillaries and stimulate the production of rhodopsin. This visual pigment is very important for night vision.

It also contains grape seed extract, one of the most powerful antioxidants, which protects small blood vessels in particular.

This combination helps to build up the eye and protect it from UV light and skin ageing.

MANNASICHT+:

Grape seed extract 10:1 (95% proanthocyanin) 60 mg.

Blueberry extract 4:1 (2 % anthocyanin) 50 mg

Zinc 3 mg

Vitamin E 14 mg

Calendula extract (5 % meso-zeaxanthin) 0.25 mg

Calendula extract (19 % zeaxanthin) 0.25 mg

Calendula extract (10 % lutein) 15 mg

In addition to this basic preparation I recommend

Glutathione 1 x 1 500 mg

Mannayan vitamin C 2x1

Mannayan vitamin E complex 1x1

Coenzyme Q10 3 -10 mg /kg body weight

Mannayan Vitamin B Active 1x1

Mannayan Vitamin A 1x 1 (5000 IU Vit A Palmitate)

Beta-carotene 1x 1 15 mg

Mannayan Zinc 2x1

Unsaturated fatty acids in the form of at least 2 tablespoons of linseed oil, sesame oil, or peanut oil alternately. Can be mixed into salad and other foods.

Extra support

The pinhole glasses



To relax the small muscles around the eye mentioned above and to train the eye to focus, pinhole glasses have proven very effective. I can recommend it to everyone - even

non-glasses wearers - to read or walk with them for at least 20 minutes a day. You will be amazed at the relaxing effect. I myself wear glasses and can confirm that after half an hour of wearing pinhole glasses, my eyes improve by half a diopter and my ordinary glasses are too strong for a while afterwards.

ChipCard Slim

Reduce weight

The Slim ChipCard was developed

- 1. for people who are unable to lose weight despite all their efforts, i.e. who presumably have a metabolic blockade that prevents all attempts and for all common sense from achieving their goal.***
- 2. to prevent the kilos from coming back on after one has lost weight.***

Time 18:30 minutes

When the metabolism slows down for various reasons and exhaustion sets in, especially due to hormonal or vegetative reasons, it is often the case that despite all dietary and accompanying measures, losing weight is extremely difficult or, as soon as the measures are stopped, the kilos are immediately back on because the basic problem, namely the metabolism, has not changed. This does not only affect people over 50, for whom it develops gradually, but can occur much earlier with today's lifestyle. The number of people who visit practices and say: "I can do what I want, I'm not losing weight" is not insignificant and they are often met with scepticism about their sincerity.

Prerequisite

The prerequisite for the Slim ChipCard to work is, of course, that there is no hypothyroidism. If this is suspected, then it is essential to use the SD ChipCard first (or in parallel) and to include all the measures explained in the chapter on hypothyroidism. Please refer to ChipCard SD.

Effect of the Slim-CC

The chip card is designed in such a way that acupuncture points which are responsible for controlling the metabolism have been programmed onto this ChipCard so that when these points are exhausted, these mini-batteries (i.e. the acupuncture points) are recharged by the special frequencies. When the mini-batteries are then fully recharged, they immediately boost the metabolism and the "weight loss blockade" is broken.

Here is a description of the mode of action of the activated points:

- ***Stomach meridian***

Some points of the stomach meridian are involved. In Chinese medicine, the stomach meridian is also responsible for "separating the cloudy from the clear". This means, translated, that an initial selection of the nutrients from our food that we need or do not need already begins here. It is also responsible for the tone of the whole body, which means that if the stomach meridian has no more vital force, the metabolism will also slow down. Therefore, several relevant points are targeted here. These points also neutralise cold states. A cold state shows that there is a slowing down of the metabolism.

In addition, they also have the effect of dynamising and moving the vital force and stimulating the metabolism at various levels. Also included are stomach points that stimulate the hormone system.

- ***Liver meridian***

Furthermore, the point selection of the liver meridian supplies vital forces to the lower abdominal area again. As we know, the liver is a very important organ that is also responsible for regulating the sugar and fat metabolism. There are also points where the elemental force of the human being for metabolism is stimulated once again.

- ***Large intestine meridian***

Points from the large intestine that are also supposed to stimulate the metabolism.

- ***Spleen/Pancreas meridian***

There is also a point selection from the spleen/pancreas meridian. Here, of course, the sugar metabolism is primarily affected. This in turn additionally strengthens the spleen and stomach meridian, discharges unnecessary humors and so-called phlegm blockades. Too much phlegm (phlegm is cold and consumes energy) slows down the metabolism. Spleen/pancreas points also stimulate digestion so that there is no standstill here.

- ***Bladder meridian***

The bladder point selection in turn has a cross connection to the power of the spleen. This has an effect via the back. The theme here is again assimilation, i.e. supporting the absorption of fine nutrients and also regulating unnecessary juices.

- ***3-heater meridian***

Then we have the hormone meridian, which directly influences hormones. The point selection should practically stimulate the whole metabolism again and indirectly also the vitality of the element wood, so that the liver becomes more active.

- ***Circulatory and heart meridian***

Then we also have the favourable effect on the circulation, so that the warmth can flow, as well as from the heart meridian, which strengthens the work of the heart. Here the heart is stabilised and the elemental force, the elemental Chi, is stimulated.

- ***Governing Vessel***

And finally, a point selection from the Governing Vessel, which runs over the back and stimulates practically all Yang channels, i.e. everything that has to do with metabolism, again regulates the liver, supports the heart and promotes warmth in the lower abdominal area.

And all these points, respectively their frequencies, are stored in an optimal way, so that the metabolism is supported here in a plan of losing weight.

For optimisation, to increase the flow of ions at the cell membranes, the intake of MineralvitGold 3 x 20 drops daily is necessary.

Mitochondria - power stations of the cells and obesity

Mitochondria are small, mostly oval particles, hundreds to thousands of which are found in almost every cell. The more metabolically active an organ is, the more mitochondria it contains. In heart cells, they account for up to 36% of the weight. Mitochondria are very susceptible to damage and their ability to repair is very low. At 20% damage, the person can compensate. At 40%, symptoms appear, such as a decrease in resilience, alcohol is less tolerated, weight gain.

Further stresses, such as psychostress, infections, vaccinations, medication intake can then lead to damage of up to 60% of the mitochondrial DNA copies and trigger massive diseases.

Mitochondria are also responsible for cellular respiration, fatty acid synthesis and the breakdown of keto, fatty and amino acids, among other things. From all this it is obvious why they interest us in weight loss.

Overweight people almost always show dysfunction of the mitochondria and sugar is not converted into energy but into body fat.

The nitrosative stress (cell poisoning) has been proven to inhibit carbohydrate utilisation and leads to increased storage of body fat and increased blood fat levels - up to fatty liver and cirrhosis, which result from mitochondrial insufficiency.

The special frequencies from the Slim ChipCard optimally stimulate the acupuncture points that control the metabolism. Cellular respiration (ATP) improves by up to one hundred percent for up to 24 hours. However, if the electrical ions that power these little generators do not find the appropriate substance (fuel) to function (burn and produce energy), the process comes to a halt again after 24 hours. This is the reason why I strongly advise taking the following preparations, in parallel with your other efforts.

In my practice, I test almost every patient's level of mitochondrial activity and prescribe the appropriate remedies to optimise it. This saves a lot of time in the therapy and helps enormously to achieve the goals.

Most important food supplements:

		contains (among others)	
Mannayan Power B+	every 2nd day 1x 1	B12 1000 µg B1 100 mg Folic acid 800 µg Zinc 5 mg B2 3 mg B6 15 mg Betain 400 mg	Contains sufficient B12, B1, folic acid (B9). Fatty tissue consumes extra vitamin B12. Elevated blood sugar levels require additional B1.
Mannayan Vitamin B aktiv+	2x 1	B5 500 mg B1 25 mg B2 25 mg B3 20 mg B6 25 mg B12 200 µg Chrome 10 µg	Contains vitamin B6 in its active form pyridoxal-5-phosphate.
Mannayan Mineral salt	2x 1	Kaliumnatriumtartrat 315 mg Magnesium 70 mg	Magnesium can prevent ravenous appetite, activates the metabolism to burn fat and regulates the secretion of insulin. Potassium is an important building block for enzymes that stimulate the metabolism.
Mannayan My Glucofriend+	2x 1	Magnesium 60 mg Cinnamon Extrakt 20:1 25 mg Zinc 5,9 mg Chrome 135 µg	Contains chrome and cinnamon to regulate sugar metabolism.
Mannayan Lipo-Glutathion Kombi+	2x 1	Liposomal Glutathione 100 mg N-Acetyl-L-Carnitin HCL 200 mg Alpha-Lipoic acid 100 mg	Glutathion zur Unterstützung der Leber. Alpha-Liponsäure begünstigt die Fettverbrennung.
L-Carnitin	2x 1	250 mg	Increases fat burning.
Mannayan Vitamin D3 intensiv+	1x 1	2500 IE (62,5 µg)	Favours the reduction of abdominal fat.

Mannayan Coenzym Q10+	2x 1	30 mg	Contains Q10 as an optimally absorbable nanochinone.
-----------------------	------	-------	--

Take all preparations for at least 5 weeks, then possibly reduce the quantities.

Incidentally, it has been proven that an obese metabolic condition can be triggered by numerous medications, such as diuretics, beta blockers, glucocorticoids, antidepressants, protease inhibitors, immunosuppressants and statins.

Obese people often have a vitamin B12 deficiency, which can also be detected in fat children. The reason is that fatty tissue promotes inflammation, which increases nitrosative stress, which in turn consumes vitamin B12. As a result, obese people have nerve pain, numbness, tingling and paraesthesia in their hands and feet at an early age. In extreme obesity, the γ -GT liver value is elevated as a sign of inflammation. This in turn reflects the disturbed glutathione metabolism and in many cases has nothing to do with alcohol consumption.

Restless children also need sugar reduction with B12 support.

Fructose significantly increases blood pressure and makes you fat faster than glucose. Fructose also increases fat formation and blood lipids.

For those who would like to deal with this topic intensively and scientifically, I recommend the German book *Mitochondrientherapie - die Alternative (Mitochondrial Therapy - the Alternative)* by Dr.sc.med. Bodo Kuklinski and Dr. Anja Schemionek.

On the dietary setting

In my decades of practice I have repeatedly had the experience that patients who were put on a strict Candida diet lost weight naturally in over 90% of cases. This experience should definitely be applied here as well. This means (for the Candida diet) that

- fast acting sugar is forbidden, this includes sugar in any form,
- all white flour products,
- alcoholic beverages, and of course, sugary drinks and

- quit fruit, as fructose is also metabolised by candida.

When losing weight, the latter is not urgently necessary, although great caution must be exercised here. A few berries are fine, but a banana is of course a sugar and calorie bomb. You certainly won't be able to lose weight if you don't give up sweets and too much fruit. I recommend that anyone who really can't lose weight, in addition to using the Slim ChipCard, stick to the dietary measures mentioned during this time.

Exercise

Without exercise, in my experience, weight loss is very very difficult. There are several free apps you can download to your phone that count your steps every day. Some apps even tell you how many steps you should walk to lose weight and remind you to drink enough water.

The best thing is always your own experience, which means increasing your physical activity every day until you find out for yourself from one day to the next how many steps you need to achieve weight loss. In my opinion, experiencing a pleasant sweat 4 times a week should be the norm. Walking, in my experience, only applies above the age of 80.

Drink

When you lose weight, it is essential that you drink enough water to flush out all the waste products that have been released. Depending on your weight, 1.5 to 2 liters of high-quality water (not tap water) are necessary. Teas and mineral water do not count towards this amount, but can be taken in addition. Fruit juices drop out because of their sugar content. Many are surprised that careful documentation at the end of the day reveals that they do not drink enough water after all.

Calorie counting

Thirdly, I recommend that everyone also download a free calorie counter app and carefully record what you eat for a few weeks. This holds a lot of surprises, for example which foods you always thought were low in calories actually have a lot of them, and especially what quantities of them you consume. Some of these apps calculate how many calories you can eat based on your age and weight. This often doesn't quite match the result of losing weight, but it is very useful to have a reference point.

Intermittent fasting

Furthermore, I recommend practising "interval fasting" to a greater or lesser extent, in any case reducing your food intake to twice a day with very few exceptions. This can be managed well, and you don't have to give up too much. Intermittent fasting has a very important lesson: you learn to appreciate a natural small feeling of hunger. The small feeling of hunger is a natural therapy. The body is relieved of the constantly full stomach and can finally boost other functions, such as detoxication and fat loss. We are usually more active and feel lighter. After a few days, the compulsion to constantly stuff your stomach to feel better disappears.

My own experience

My own experience was that, despite sensible exercise, calorie counting, only two meals a day where I did without a lot and taking nutritional supplements, losing weight was very slow. And here the Slim ChipCard immediately worked very well. But only after the thyroid function was brought to a normal level with the SD ChipCard. From then on, the measures worked very well.

Maintaining weight with the Slim ChipCard

This is the big question, the big crux for everyone. And this is exactly where the Slim ChipCard can be of outstanding help. The most common complaint and reason for resignation is that after losing weight, the kilos are soon back on. There are 2 reasons for this:

1. the metabolic situation has not changed.
2. you fall back into your old patterns.

- To the first point:

No one wants to be put on a diet for the rest of their life. But if the metabolic situation remains as it is, you will inevitably gain weight again. But this is where the Slim and SD ChipCards can help well. You need to find out what your maintenance dose is. For some, a single weekly application is enough. For others, the ChipCard needs to be run 2 times a week to stay fit, often in combination with the SD ChipCard. On average, the Slim ChipCard should run once every 4 days.

- Do I have to run these programs for life?

No. Once your mini-batteries are recharged and your metabolism has normalised, this is no longer necessary. But beware, this may well take 6 to 8 months in the case of exhaustion and other chronic illnesses.

- On the second point:

Once you have used your diet in combination with the weight loss chip card for several weeks and reached your desired weight, be sure to maintain some of the good habits you have formed.

This includes:

- drinking enough water
- maintaining a suitable stint of exercise
- eating fewer carbohydrates with an instinctive sense of calorie intake
- intermittent fasting regularly on certain days when it is convenient
- maintenance dose of nutritional supplements:
 - o M. Power B+ 2 x weekly 1
 - o M. Vitamin B aktiv+ 2 x weekly 1
 - o M. Mineral salt 1 x 1 daily
 - o M. My Glucofriend+ 1x 1 daily
 - o M. Vitamin D3+ 1x1 daily
 - o M. Mineralvit Gold 1 x 20 drops daily

This, in combination with the Slim ChipCard will help you to find your personal equal weight. I wish you much strength and success.

ChipCard Tum

Tumor

Time 26:00 minutes

The Tum-ChipCard consists of a special combination of precisely calculated frequencies of acupuncture points that affect the symptom complex of tissue compaction and neoplasms.

A tumor stands at the end of a pathogenetic sequence (disease process), which sometimes stays unnoticed for quite a while and only materializes as a tumor after a long time. The ChipCard Tum aims to re-tonify some strategic acupuncture points that are severely deficient within this long course of disease - in an attempt to stop this disease process.

Prerequisite

The ChipCard does not replace diagnosis and therapy with therapy concept and controls. It creates a good basis so that the body is able to process a systematic therapy better.

Effect of Tum-CC

Spleen Meridian

As a representative of the functional circle earth (the center of man) some selected points of the spleen meridian. The meridian is generally used in case of decrease of vitality and some of its points have compaction and hardenings as indication. Let us not forget that the spleen also has an influence on the lymphatic flow.

Small Intestine Meridian

It is generally used for energetic weakness and coldness. As an indication of the point selection we find ulcers.

Bladder Meridian

Accumulation of cold moisture (precancerous loads) and the selected points have the indications of ulcers, compaction and hardening, edema, lack of vital heat, skin rashes.

Kidney Meridian

According to TCM conception the site of the material basis of the human being and the selected points with the indications compaction, hardenings, neoplasms (cancer).

Circulation meridian

It has a general effect on energetic weakness. The selected points include the indications ulcers, swellings.

Gallbladder meridian

It shows general effect in coldness and weakness. In the selected points we find the indications ulcers, inflammation, swelling of the lymph nodes in the armpit, goiter, swelling and ulceration of the glands.

Application

Daily application followed by at least 20 minutes of grounding.

Supporting measures

- BiBlo ChipCard
- FvE ChipCard
- BR ChipCard
- Clst ChipCard
- Detox ChipCard
- Vitamin C high dose
- Selenium
- M. Vitamin D3+
- Glutathione
- Juglandis as a parasite cure
- Papain cure
- Nutramedix Samento
- Mannayan Colloidal silver water
- Bitterstern

- Mannayan Derma-Clean L (Liver)
- Mannayan Derma-Clean N (Kidneys)

Dosages by a naturopathic therapist.

- Be sure to follow a sugar-free diet.

Further information

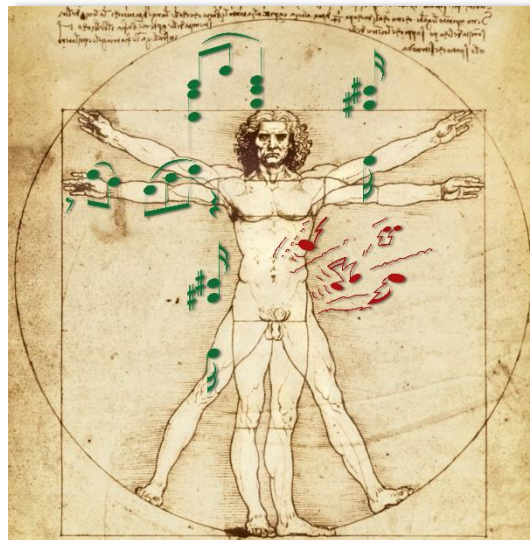
- *Alan E. Baklayan* - Parasites
- *Alan E. Baklayan* - Cancer - Therapy and Research: Patient script for adjunctive tumor therapy of the Baklayan practice

The Tum-ChipCard is a valuable basic therapy. Depending on the type of carcinogenic load, a precise therapy protocol should be established by an expert therapist.

ChipCards for harmonization of functions

The respective frequency ranges basically serve to harmonize and regulate the meridian system of TCM on different levels and layers. It is not quite easy to translate this effect into symptomatic terminology. The description below is intended to present an overall picture of the effect of the frequencies.

In order to benefit from the regulation/harmonization of these ChipCards, you do not have to literally recognize all the conditions within you, but the tendency direction.



BrV – Bronchial mucus

Time

27:00 minutes

This ChipCard consists of 9 different frequency ranges and individual frequencies, which are precisely coordinated to regulate lung and bronchial function and dampen mucus production and cough irritation. Some points have a cooling effect on the bronchi and against shortness of breath.

The energetic governance of the gallbladder meridian end point, which is defined in TCM as effective against breath constriction, coughing, tightness of the throat, is calmed. In addition, some points from the circulatory meridian and connective tissue are dampened to reduce the tendency to inflammation.

Cel – Cellulite

Time

27:00 minutes

This ChipCard consists of 10 different frequency ranges and individual frequencies that are precisely coordinated with each other. The frequency ranges activate all areas that must work together to reduce cellulite, especially lymphatic drainage, skin and subcutaneous function, vein reflux, connective tissue activation, stomach deacidification and liver function stimulation.

The energetic exhaustion of the nervous control into the intracellular space prevents the physiological metabolic processes of the ion channels of the cell membrane, which leads to the retention of acids in the cells and what is called "cellulite".

DaFI – Improve intestinal flora

Time

28:00 minutes

This chipcard, which consists of 14 coordinated frequency ranges, is generally used for intestinal flora improvement. It contains low frequencies that have a supporting effect on the exhausted vegetative system and provide the right tension in a slackened colon.

Furthermore, the vegetative part of the small intestine meridian, as well as the exhausted small intestine peristalsis is supported on the sublevel of the central nervous system.

Often in this picture, one finds nonspecific upper abdominal complaints associated with food intolerances.

In the case of the small intestine, it is sometimes necessary to think of a disturbance of the protein metabolism, which is due to an amino acid deficiency and/or excessive protein consumption. Secondly, this can lead to liver exhaustion, which is why frequencies for liver support are also included here. These frequencies can also have a beneficial effect on a reaction to histamine in the small intestine.

A prerequisite for proper carbohydrate utilization is that the pancreatic juices flow well. The relaxation of the spleen-pancreas meridian at the humoral level favorably influences the carbohydrate metabolism disorder (excessive sugar consumption) with these frequencies.

The whole picture can go so far that the mucosal barrier is no longer intact.

All frequencies work together to restore the damaged mucosal barrier and build up the intestinal flora.

DaFu – Improve intestinal function

Time

27:30 minutes

This chipcard consists of 11 different frequency ranges that are precisely matched to help bowel function in general when there is a tendency to constipation and hard/difficult bowel movements.

Among other things, it includes higher frequency ranges, that have a relaxing effect on the upper abdomen.

It also activates the non-specific immune system of the intestines, as well as kidney frequencies that regulate the water balance of the stool.

Furthermore, low frequencies that have a relaxing effect on the vegetative system in the upper abdomen, including non-specific reactions to food.

Relaxing the flow of juices in the abdomen to the point of relaxing the spine, which, as we know, is always reflexively related to intestinal function. Especially conditions on the lumbar spine due to chronic tension of the colon/psoas muscle.

Durch – Diarrhea

Time

27:30 minutes

This chipcard consists of 11 coordinated frequency ranges.

According to TCM conception, excessive activity of the spleen-pancreas function is associated with diarrhea to vomiting, possibly accompanied by lack of inner warmth and cold feet.

This chipcard contains individual frequencies of the spleen-pancreas meridian at both the vegetative and cellular sublevels that have an attenuating effect on its energetic function.

Furthermore, a calming of the intestines on the energetic humoral level.

Other frequencies are used to improve the faulty breakdown of food in the small intestine, which has led to diarrhea, by stimulating the hormonal release of the pancreas at the cellular level.

Finally, frequencies that stimulate the bile function at the humoral level are used to support fat digestion.

Hae – Hemorrhoids

Time

27:00 minutes

This chipcard consists of 9 coordinated frequency ranges, which have a beneficial effect on the liver meridian and liver detoxification at the humoral level, since hemorrhoids are usually a congestion of the liver, which in turn leads to a backwater of the portal vein (venous blood).

The small intestine activity is co-supported to relieve the excessive pressure in the abdominal area.

LeFu – Harmonize liver function

Time

27:30 minutes

This chipcard consists of 10 coordinated frequency ranges that harmonize and strengthen the entire liver function.

By supporting the lymph at the humoral level in the chest area, the liver is decongested and stimulated for detoxication. Especially if the condition is due to stress.

Furthermore, the emotionally tensed small intestine meridian is attenuated on the vegetative sublevel also of the thoracic area, so that the backpressure to the liver is also relieved here. The liver itself is supported on the energetic humoral level and decongested on the cellular level.

Since detoxication of the liver and skin function are closely related, the function of the skin meridian is also supported.

LV – Lung volume

Time
28:00 minutes

This ChipCard consists of 8 different frequency ranges and individual frequencies, which are precisely tuned to each other in order to improve lung function, especially in cases of respiratory constriction and shortness of breath, in other words, when the lung volume is restricted. Here, the shortness of breath and/or shallow breathing caused by the vegetative energetic collapse of the lungs is improved.

Some frequencies also act on shortness of breath caused by bronchial congestion and asthma.

A feeling of suffocation caused by congestion in the heart is also improved here.

Supported by a relaxation of the arterial system.

MÜ – Stomach acidity

Time

29:15 minutes

This chipcard consists of 13 coordinated frequency ranges, which have a regulating effect on the overacidified stomach, including belching and heartburn.

The frequency ranges are chosen to attenuate the stressed stomach meridian, as well as regulate its blood flow - both at the humoral level, as well as at the level of contact with the outside world.

As a support, the liver meridian is decongested - on the vegetative, as well as on the cellular sublevel, so that no backpressure affects the stomach.

The large intestine is also relaxed on the vegetative sublevel to counteract any upper abdominal congestion and cramps.

NiE – Kidney detoxification

Time

30:00 minutes

This ChipCard consists of 6 different frequency ranges and individual frequencies that are precisely tuned to stimulate kidney detoxification. The approach here is to compensate for this potentially chronic weakness that can cause toxin backlog by supporting all the systems that need to work together in and around the kidney. This includes the venous system, the kidney itself, and the liver.

The skin and colon meridian are also stimulated at the vegetative level to do their part in the detoxification task.

NUV – Food intolerances

Time

28:30 minutes

These 19 closely coordinated frequency ranges have a broad spectrum of effects.

Among others, the following effects are included: Calming of the allergy meridian on the energetic sublevel and calming of the overexcited triple warmer (hormone meridian) on the vegetative sublevel.

The small intestinal mucosa is supported at the cellular level to regulate small intestinal activity when in contact with food.

Congestion in the pancreatic meridian at the vegetative, as well as at the humoral level is resolved to improve the breakdown and digestion of carbohydrates and sugars.

The liver meridian is supported at the cellular level to compensate for protein intolerances.

PB – Prostate conditions

Time

28:00 minutes

This chipcard consists of 14 coordinated frequency ranges.

According to classical TCM, the prostate area belongs to the bladder meridian as well as functionally to the liver meridian.

Therefore, these two meridians are both attenuated and supported on several sublevels.

At the humoral level, they are attenuated to counteract congestion.

On the vegetative vital sublevel, they are supported to counteract the decreasing vitality in the abdomen.

The non-specific immune system is stimulated at the cellular level to prevent any germs in this area. The energetic congestion at the cellular level is attenuated to facilitate prostate function.

The connective tissue meridian is stimulated several times at different sublevels to counteract prostate remodeling and prostate enlargement.

RB – Irritable bladder

Time

28:00 minutes

This chipcard consists of 7 coordinated frequency ranges, that can have a beneficial effect on the regulation of an irritated bladder.

The frequencies of the bladder meridian will have a calming effect on the supply of vital force to the humors and the cellular level to relieve the congestion and calm the irritation.

Here, the connective tissue meridian will also be attenuated to counteract any cold feet.

The lung meridian is supported to improve the vital force of breathing.

At the cellular level, the specific immune system is stimulated to support the fight against possible germs, thereby counteracting the frequent urge to urinate.

RzH – Irritant cough

Time

27:00 minutes

This ChipCard consists of 7 different frequency ranges and individual frequencies, which are precisely coordinated to help lung function in general - especially in the case of irritable cough.

In the case of an energetic weakness of the lungs, especially in the case of a long-lasting irritable cough, phlegm in the throat, pain in the throat, tonsillitis up to febrile inflammation, irritable cough with sticky-white mucus expectoration, energetic congestion of the lungs at the cellular level up to asthma symptoms, blocked nose and bronchitis with a lot of sputum.

Several of the points included are used for both irritable cough and asthmatic conditions.

ChipCards according to Baklayan

4W (Four Walls)

The four protective walls of Immunity

Bioenergetic testing by therapist:

Pathogens can be tested well on the lymphatic system as well as on liver and lung or symptomatic, e.g. with intestinal symptoms in the large intestine. Open the intracellular space with FvE-ChipCard for 7 minutes prior to this.

For self-help:

Supporting ChipCards:

- Prepare with **BiBlo**
- **DTX** activates excretion and detoxication
- **Multi** multi-resistant germs
- **Diamond Shield Program** Basic balancing of energy levels
- **Crystal** for a deep regulation of the entire meridian system

About the mode of action

In his harmonical frequency system A.E. Baklayan succeeded in defining 4 areas of the unspecific immune system, which can be imagined as 4 high protective walls of a castle, which protect us from attacks of any pathogen. In modern man these 4 walls have become brittle due to various strains. When using the 4 frequency ranges, the immune protection is immediately effective again. This protection lasts about 24 hours. With each application the walls are repaired bit by bit and the unspecific immune system becomes stronger and stronger.

Application

4W 1-4

Time (Minutes)

13:00

- On the first day, the application should be used 4x in a row. You may use it up to 6x in case of a weakened immune system.
- On the second day 3x, on the third day 2x, and from the fourth day onward 1x per day prophylactically.
- In case a cold develops, let the program run 4 - 6x until the patient feels significantly better.

Additional applications:

- In cases of any infection or chronic diseases the regular use of this ChipCard is particularly important.

Therapy-supporting recommendations:

We recommend Samento, Takuna, Mannayan Boswellia and Mannayan Glucan as therapy supporting means with specific effect against viruses:

- Mannayan Glucan+, 1x daily 1 capsule
- Takuna, 2x daily 8 drops
- Samento, 2x daily 8 drops
- Houttuynia, 2x daily 15 drops
- Mannayan Boswellia, 1x daily 1 capsule
- Mannayan Colloidal silver water, 2x daily 1 tsp. (no metal spoon)
- Mannayan Zink+, 2x daily 1 tabl.
- Mannayan Vitamin D3+ 1x daily 1 caps.

For glutathione supply:

- Mannayan Lipo-Glutathion+ 1x daily 1 capsule

A (Asthma)

Great success

At a glance

Great success even with severe asthma

Bioenergetic testing by therapist

Lung meridian or directly to the lungs, allergy meridian

For self-help:

Supporting ChipCards:

- **METAL Support** (5 elements) - daily
- **Lu** (lung) - every 2nd day

2 times a week:

- **BiBlo** eliminates bioenergetic blockades
- **DTX** activates excretion and detoxication
- **Diamond Shield Program** Basic balancing of energy levels
- **Crystal** for a deep regulation of the entire meridian system

Intensification:

- **CAN** (Candida) intensifies Candida therapy
- **ASP** enhances the elimination of Aspergillus
- **ImPar** activates the immune system against parasites
- **Healing Frequency** search term asthma
- **Frequency Compendium II** searchindex asthma

Recommended literature

A. E. Baklayan: ASTHMA, Publisher Michaels, *Parasites – The hidden Cause of many Diseases*

Application

Asthma 1-12

Time (minutes)

52 min

About the mode of action

The basis for the great success of this treatment, attributable to the discovery by Dr. Hulda Clark, is, that in asthmatics a roundworm (Ascaris) is almost always located. Meanwhile, numerous scientific study results confirm the fact that roundworms and their larvae, like dust mites and also Aspergillus, almost always represent the triggers of allergic reactions such as asthma.

The frequencies contained in the Asthma-Chip eliminate effectively roundworms and their larvae, Aspergillus, house dust mites and Candida.

How to use

The use of the Asthma ChipCard in patients with severe asthma should be accompanied therapeutically.

For patients suffering from mild symptoms of asthma, such as stress asthma, treatment with the Asthma ChipCard is usually sufficient. This should be applied regularly over a period of about 8-12 weeks and supplemented by a Papain cure (below-mentioned).

Please Note: If possible, let the asthma chip run off immediately if you as an asthmatic notice an approaching seizure or are already in an attack.

It is generally assumed that a severe asthma-suffering is always accompanied by a Candida infestation. For this reason, a long-lasting treatment success with definitive complaint freedom will be only set when the fungal infections caused by Candida and Aspergillus have been completely eliminated. Especially for the treatment of Candida is essential adherence to a strict diet (see below). Even in this case and at the same time a stable condition of the patient, the earliest possible elimination of this fungal infection is after the expiry of four months, in exceptional cases only after about 1 1/2 years. An exemption from Candida within a period of 4 to 6 weeks is not possible, unlike the technical literature lays down.

Recommendation of an Asthma-Chip application for further appeals

Roundworms and Aspergillus infections also most frequently occur in bronchial asthma, bronchitis, pneumonia and chronic cough. Also with Neurodermitis and Psoriasis, for whose occurrence roundworms and Candida infections almost always play a triggering role, an asthma chip application is very advisable.

Further intensification by Plate Zapping

The Asthma ampoule set for Plate Zapping consists of:

- Lungs bronchia
- Ascaris Mix
- Aspergillus Mix
- House dust mite
- Tuberculosis
- Candida Mix

Results and experience of the Asthma-Chip application

Meanwhile, there could be documented numerous fantastic healing results in asthma disease by a regular Asthma-ChipCard application and the consistent compliance to the diet. In many other cases, Candida was tested after about

6-8 months only with 0.6 to 0.8 volts; the patients themselves were almost symptom-free at this time.

Patients who began to neglect their diet again considering these successes, old symptoms made quickly noticeable, and the test levels bounced up again.

A resumed, strict continuation of the complete therapy program liberated these patients after a maximum of 1 1/2 years finally from their complaints. Also Candida spores could then no longer be detected.

Please note: The diet must be maintained only until the final outcome of the therapy.

Recommendations for a successful asthma therapy

- 1.) Usage for the treatment of roundworms: use the classical frequency according to Dr. Hulda Clark of 408 kHz.
- 2.) Avoid in consultation with your doctor as far as possible the use of asthma spray and use this only in real emergencies.
- 3.) Begin the treatment for an acute asthma attack with an intensity of 6 volts and reduce it. In this way, you can identify the appropriate voltage. Thereby the roundworms life force will experience the fastest reduce.
- 4.) You can improve the effectiveness of the Asthma ChipCard by attaching the electrodes directly to the affected area.
- 5.) The Candida infection has usually set deep in the lung pockets in patients who suffer of severe asthma. If the recommended diet will be interrupted, or the intake of prescribed means against the Candida infestation reduced, the fungus directly regains its old strength.
- 6.) As a rule, the only reason for relapsing symptoms is the premature interruption of the diet.

Therapy-supporting recommendations

- Adrenal support for adrenal insufficiency 1x daily 20 drops
- Takuna, 2x daily 8 drops
- Banderol, 2x daily 1-30 drops (increase dosage slowly)
- Barberry, 2x daily 15-30 drops
- Burbur or Burbur-Pinella, 1-2 times daily 15-30 drops

The application of a Papain-cure for asthma patients

The Papain cure

- You should not have eaten for at least 2 hours before taking the Papain capsules daily.
- Then take 1000 mg Papain and 1000 mg L-Cysteine hourly - for 5 hours.
- Two hours after the last dose you can eat again as usual, but low in protein.
- Continue taking the daily dose for 2, 4, or 6 days, and then pause for 2, 4, or 6 days as appropriate. Repeat this procedure until your symptoms subside.
- Reinforcement of the cure: Laxative on the eve of the treatment
- Repeat treatment in case of persistent ascarid infestation!
- Reduce the daily dose in case of strong reactions such as abdominal stabbing or pain.

The Candida Diet to remove the Candida fungus

Renounce completely to any form of sugar, fruit sugar – any fruits fresh or dried, jam, maple syrup, honey, chocolate, coconut blossom sugar, agave syrup, sugar-containing flour dishes and pastries, as well as sugar-free sweeteners such as saccharin, aspartame, xylitol, erythrol, sorbitol and cyclamate. Do not drink fruit juices, soft drinks, cola or alcoholic beverages.

The consumption of pasta and white flour products is not allowed. Crisp bread and whole grain bread, unsweetened cereal and rice should also be taken only moderately.

Look out for hidden sugars when you shop - the table of contents shows the often surprising content of monosaccharides in foods (e.g. cashews, ketchup).

Do not eat pork or breaded meats when eating meat and sausages.

Fish and eggs as well as milk, cheese, unsweetened sour milk products, butter and oils are permitted. Eat potatoes, pasta made from legumes (in the "gluten-free range" of supermarkets), raw and cooked root vegetables, radish, legumes, kohlrabi, cucumber, tomatoes, spinach, raw and cooked sauerkraut, onions, garlic, garden herbs, spices. Limit your choice of drinks to unsweetened tea and water.

Additional help for asthma

You can find more details and supportive means to asthma therapy in the German book: "ASTHMA" by Alan E. Baklayan, Publisher Michaels

Akn (Acne)

At a glance

Healing up skin blemishes

Bioenergetic testing by therapist

Meridians large intestine, lung, threefold warmer

For self-help:

Supporting ChipCards:

- **DTX** activates excretion and detoxication
- **Diamond Shield Program** Basic balancing of energy levels
- **IM** (Immune-Modulation)

Intensification:

- **Healing Frequency** search term acne
- **Frequency Compendium II** searchindex acne

The chipcard contains Rife frequencies and Clark frequencies, e.g. Staphylococcus aureus, Nocardia asteroides, Ascaris megalocephala, Leishmania donovani.

Attention: Accompanying intestinal rehabilitation urgently necessary. See ChipCard DTX. A diet low in carbohydrates has a supporting effect.

Application

Akn 1-10

Time (minutes)

47 min

All (Allergy)

At a glance

Sustainable help with all allergic reactions

Bioenergetic testing by therapist

Element water, element fire, meridians allergy, lymph, spleen, threefold warmer, main allergen mix-ampule (ampule IV. Primary Allergy Mix Ampule, testkit Food Products)

For self-help:

Supporting ChipCards:

- **BiBlo** eliminates bioenergetic blockades
- **DTX** activates excretion and detoxication
- **Diamond Shield Program** Basic balancing of energy levels
- **Crystal** for a deep regulation of the entire meridian system

Intensification:

- **Plate-Zapping** with allergens
- **ASP** for mold on the pollen
- **EG** (4 flukes) with parasite load
- **Papain cure** with parasite load
- **L** (Liver)
- **CAN** (Candida) if it is testing
- **Healing Frequency** search term allergy
- **Frequency Compendium II** searchindex allergy

Recommended literature

A. E. Baklayan: *Parasites – The hidden Cause of many Diseases, - Gentle Self-Healing with harmonic waves – A practical Manual*

The ChipCard contains 3 program sequences.

Application	Time (minutes)
Basic therapy	50 min.
Energy balance	20 min.
Plate zapping or acute allergic reactions	20 min.

The basic therapy contains frequency programs for the most important parasites, causing allergic reactions (Ascaris, Strongyloides, Flukes, Salmonellae). The program sequence should be applied at least 2 times a week.

The second program sequence for energy balance has a similar effect as an acupuncture application in allergy. The sequence should be applied at least once a week, on occurrence of favourable effects perhaps even daily.

The third sequence

1. can be applied on occurrence of **acute reactions**, directly for an immediate sedative effect, on occurrence of favourable effects perhaps even several times daily.
2. can be applied **in combination with Plate Zapping**, placing the respective allergen (food, pollen (from the window bench), house dust) onto the plate.

Therapy-supporting recommendations

- Mannayan Boswellia, 1x daily 1 capsule
- Mannayan Cal+, 1x daily 1 capsule
- Mannayan Zink+, 1x daily 1 tabl.
- Mannayan MSM or MSM Kombi+, 1x daily 1 capsule

AR (anti-smoking)

Really easy way to stop smoking

At a glance

AR ChipCard and specific organ detoxication make it possible

Bioenergetic testing by therapist

Lung meridian or directly on the lung; meridians liver, skin, connective tissue, circulation

For self-help:

Supporting ChipCards:

- **DTX** activates excretion and detoxication - daily
- **Diamond Shield Program** Basic balancing of energy levels - daily

Intensification:

- **Lu (Lung)** - daily
- **L (Liver)** - 2 times a week

Recommended literature:

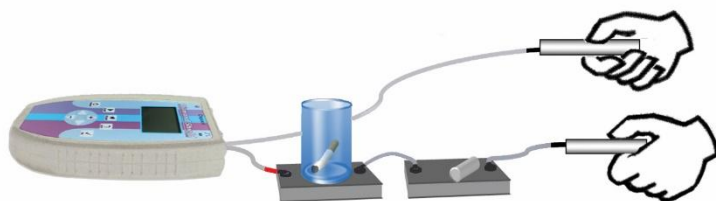
A. E. Baklayan: *German book: "Nichtraucher – jetzt – werden"*, (Become a non-smoker) Publisher Michaels

About the mode of action

The anti-smoking program includes specially coordinated frequencies for the liver, lungs, blood, intestine and intestinal mucosa, which use is supplemented with diversion ampoules for these organs. The combination of the serious intention to quit smoking, the application of the AR-Chips and a supportive removal of toxins leads to highly successful treatment results.

How to use

At first, the cigarette is placed in a glass on the first plate (connected with the positive pole on the zapper with the red plug) and the lung ampoule from the ampoule kit Anti-Smoke on the second plate. After opening the AR program from the ChipCard, pressing the OK button again will display the contained programs for lung, blood, liver, intestine and mucous membrane, which can be played one after the other. For each program, the corresponding ampoule is placed on the second plate.



Application	Time (minutes)
Lung	10:00
Blood	10:00
Liver	10:00
Intestine	10:00
Mucous membrane	10:00

Results and experiences of the anti-smoking application

The plate zapping method described above causes detoxication reactions in 60 - 70 percent of all patients. One side effect that could be most frequently observed is a sudden reluctance of patients to cigarette smoke to which they now react very sensitively. The typical withdrawal symptoms are noticeable minimally when as mentioned above the toxin removal process in the treatment is performed with a cigarette.

Please note: The basic prerequisite for the success of anti-smoking therapy through chip application and rejection is a serious intention to become a non-smoker.

ASP (Aspergillus)

The liberation of mold fungus in the body

At a glance

Specific frequencies against Aspergillus (mold fungus)

Bioenergetic testing by therapist

At the loaded location, for example, lung meridian in asthma, liver meridian in a loaded liver

For self-help:

Supporting ChipCards:

- Prepare with **BiBlo** to eliminate bioenergetic blockades
- **DTX** activates excretion and detoxication
- **4W (4 Walls)** boosts the unspecific immune system
- **Diamond Shield Program** Basic balancing of energy levels

Intensification:

- **FVE** - daily 8 min to open the intracellular space
- **Healing Frequency** search term "Aspergill"
- **Frequency Compendium II** searchindex Aspergillus

In addition:

Depending on the disease combine with other ChipCards, for example, in asthma with Asthma Chip, Liver Chip for a loaded liver, etc.

About the mode of action

This ChipCard is therefore an essential component of Diamond Shield therapy, as almost all diseases are affected by aspergillae, such as asthma, hay fever, liver stress and cancer. An ASP ChipCard application is therefore also used for alcohol detoxication and general difficulties with rejections.

Application

Time (minutes)

ASP 1	07:00
ASP 2	03:00

Therapy-supporting recommendations

As a supportive measure of the treatment against Aspergillus we suggest to take Samento, 2x 8 drops daily as well as Mannayan Black cumin seed oil as a cure for at least 6 months 3 times daily ½ Tsp (1.5 – 2 ml) before or when taking a meal with plenty of water.

BaW (tapeworms)

At a glance

Get rid of lodgers

Bioenergetic testing by therapist

Symptomatic according to diagnosis

For self-help:

Supporting ChipCards :

- Prepare with **BiBlo** to eliminate bioenergetic blockades
- **DTX** activates excretion and detoxication
- **Diamond Shield Program** Basic balancing of energy level

Intensification:

- Heavy metal detoxication
- **Healing Frequency** search term tapeworm, parasite
- **Frequency Compendium II** searchindex tapeworm, parasite

Recommended literature

A.E. Baklayan: *Parasites – The Hidden Cause of Many Diseases*

Tapeworms always come with eggs and larvae. Therefore, the wobble of the entire area of this parasite is really important to ensure that all stages are recognized.

If there is a tapeworm, our tests show that other genera are there at the same time.

In this Chipcard, the 8 most important families and their frequencies are combined. It has been proven in tapeworm burden to run it every day.

Application

BaW 1-8

Time (minutes)

40 Min

Important support

- Rascal, 3x 2 caps. daily
- Mannayan Clean+, 1-3 caps. daily
- Derma-Clean Juglandis extra, 2-3x daily 1-2 Tsp.

BB (high blood pressure)

Lowering high blood pressure

At a glance

Frequencies against hypertension

For self-help:

Supporting ChipCards:

- Prepare with **BiBlo** to eliminate bioenergetic blockades
- **DTX** activates excretion and detoxication
- **ImPar** strengthens the immune system against parasites
- **GewAbn** supports liver, bile and the metabolism
- **Diamond Shield program** promotes the general balancing of the energy levels

To intensify the effect also try:

- **WOOD Attenuation**
- **FIRE Attenuation**
- **EARTH Attenuation**

Intensification:

- **Healing Frequency** search term hypertension
- **Frequency Compendium II** searchindex hypertension

Recommended literature:

A. E. Baklayan: *Parasites - the hidden cause of many diseases, Gentle Self-Healing with harmonic waves – A practical Manual (chapter elevated blood pressure)*

Application

BB

Time (minutes)

7 Min

About the mode of action

The so-called “blood pressure brake”-frequency is effective against any form of high blood pressure, if it is not associated with damage or diseases of the heart, blood vessels or kidneys.

How to use

The BB ChipCard is used every 2 days for 5 minutes each with an intensity of 0.5 volts. Throughout the duration of therapy, the blood pressure will gradually decrease for longer time in the range of normal values.

If this is not the case, please extend duration of therapy and / or reduce volt input on. It is also possible to reduce slowly the frequency of applications on every 3rd day, then every 4th day and so on.

In case of not achieving the desired effect, try in this order:

- | | |
|-------------------|----------------------------|
| 1x WOOD sedation | → remeasure blood pressure |
| 1x FIRE sedation | → remeasure blood pressure |
| 1x EARTH sedation | → remeasure blood pressure |

Please take care of your blood pressure levels regularly; it would be best to be accompanied by a therapist.

For some patients, a daily use of the program is required. There is also evidence that in some cases, an application only after a twice running BB-frequency shows its impact and achieves successful results. Therefore, always exactly pay attention to the changes in your blood pressure.

Results and experiences of the BB ChipCard application

Practical results show that when using the BB-frequency high blood pressure can be reduced permanently, when it is not in the context of organic damage. In such damage to the heart, vessels or kidneys the blood pressure values will fall likewise, but no lasting effect can be guaranteed.

Also, sometimes regulation blockades as stress caused by obesity, electromagnetic load or liver parasites prevent permanent sustained therapeutic success and therefore it has to be dealt with them at first.

Therapy-supporting recommendations

We recommend the BB ChipCard application with the Diamond Shield Zapper IE EMS with a simultaneously occurring ingestion of bear's garlic preparation (B)Remsen support, as both very well complement each other in their effect. Begin the daily doses of (B)Remsen with 2x 3 drops and increase it slowly under constant control of your blood pressure on a daily dose of 8 drops twice.

Meanwhile the therapy must be supported by

- Mannayan Mag-Citrat+ 1x 1 caps. daily
- Mannayan Deca-Mineral+ 1x 1 tabl. daily
- Mannayan Q10+ liquid 1x daily 10 – 20 drops
- Mannayan Vitamin E Komplex+ twice daily 1 tabl.
- Mannayan L-Arginin & L-Ornithin+ 1-2x 1 capl. daily

Please do not drink black tea and coffee during the entire duration of the therapy.

BiBlo (bioenergetic blockades)

For the dissolution of bioenergetic blockades

At a glance

Allow therapeutic success

Bioenergetic testing by therapist

Nervous system, threefold warmer and then also at the site of symptoms

For self-help:

Supporting ChipCards:

- **DTX** activates excretions and detoxication
- **Diamond Shield Program** Basic balancing of energy levels
- **KON** supports power of concentration
- **Crystal** for a deep regulation of the entire meridian system

Stay earthed daily 50 minutes minimum.

Intensification:

- **Healing Frequency** search term scars
- **Frequency Compendium II** searchindex scars

Recommended literature:

A. E. Baklayan: *Parasites - The Hidden Cause of Many Diseases*

About the Mode of Action

The stored frequency on the card BiBlo neutralizes negative effects of e-smog, radioactivity and scar loads; almost every patient is tested positively. For this reason it is advisable to use the BiBlo Chip prior to any treatment.

Application	Time (minutes)
Laterality	03:00
Geopathy	03:00
E-smog	03:00
Radioactivity	03:00
Scars	03:00
Keloids	03:00

How to use

In the exercise of all bioenergetic testing methods, the influence of scars and other negative loads is high. Therefore, use this chip before a therapy, followed by the DTX Chip and subsequently test to parasites or other charges.

Results and experiences of BiBlo applications

The therapy resistance of chronic pain is often based on non-suppressed scars. These can also be small scars caused by surgery or vaccination against smallpox, which block the development of a meridian. Often, after a carefully executed scar therapy with the BiBlo-ChipCard, the pain level reduces spontaneously. Thereafter, if you let directly precede the Diamond Shield, the pain will subside further. So the BiBlo-ChipCard is a significantly support for the success of different therapies, which in turn can increase the positive effect of other ChipCards.

Additional tips:

- 1.) Bioenergetic blockades can easily be both under and overrated. However, a reasonable estimate and corresponding resolution is crucial for the success of a therapy. Any time when the effect of a therapy method gets into falter, the organism must be examined and treated concerning these blockades. Especially in the therapeutic regulation using biophysical frequencies, strong bioenergetic blockades can mitigate the therapy effect.
- 2.) The term "laterality disturbance" which comes from kinesiology describes a today's widespread condition in which the two halves of the human brain no longer work properly together. The cause may be primary the excessive exercise of a unilateral activity, hours of work in front of the computer as well as an exclusive activity in the artistic/ creative field, may be held responsible.
- 3.) Geopathic stress due to the influence of water veins can also be viewed as an additional-cause of a variety of diseases, as well as for example cancer. Physical impairments such as sleep, the fatigue syndrome or hyperkineses are often based on a corresponding right-handed loading. In addition to the application of BiBlo-ChipCard itself, it is strongly recommended, especially for serious diseases like cancer, to change your own sleeping place.
- 4.) Electrosmog pollutions are based on every electrical equipment. Patients with an electrosmog allergy should remove all electrical appliances and outlets from their sleeping area within a radius of at least 1.2 meters from their body.
Note: turn off electrical appliances is not sufficient!
- 5.) Think also about the night lamp, the alarm clock, the electric blanket and the water bed. TV sets depending on their size should be up to four meters away from your sleeping area.
- 6.) Contamination with radioactivity can pursue negative influence on your organism just as contaminated as Chernobyl or by past X-ray treatments.
- 7.) Stay earthed after each application at least 50 minutes for discharging static and alternating loads (radicals). The frequencies of the BiBlo-ChipCard can neutralize the harmful effects, but long-term exposure

freedom is necessarily desirable. Talk to a building biologist / dowser whom you trust. Attention! In our experience, expensive equipment and devices are no use at all based on long-term considerations. Exposure freedom is the better solution.

Note: Vitamin C and the daily intake of 500 mg of L-cysteine capsules support the excretion of radioactive pollution.

B02 (Borreliosis/Lyme disease 2)

At a glance

Borrelia's hate-frequencies

Bioenergetic testing by therapist

Nerve system, joints, threefold warmer

For self-help:

Supporting ChipCards:

- Prepare with **BiBlo** to eliminate bioenergetic blockades
- **FvE** opening of the intracellular space
- **BO** Diamond Shield standard program
- **4W (4 Walls)** boosts the unspecific immune system
- **Diamond Shield Program** Basic balancing of energy levels
- **Crystal** for a deep regulation of the entire meridian system

Intensification:

- **Healing Frequency** search term "borrel", lyme
- **Frequency Compendium II** searchindex borrelia, lyme

Recommendation:

A.E. Baklayan: *Borreliose und die Behandlung in seiner Praxis mit der Harmonikalischen Schwingungstherapie, Interview on YouTube in german*

Recommended literature

A. E. Baklayan - *Gentle Self-Healing with harmonic waves – A practical Manual (chapter "Lyme disease and Epstein Barr")*

Application	Time (minutes)
Sequence 1 / 30 programs:	25:30
Sequence 2 / 26 programs:	37:12
Sequence 3 / 35 programs:	34:00
Total	96:42

The sequences contain tested frequencies in their optimal intensity adjustment.

Please apply carefully: Each sequence on another day. Only when you feel better, you can try to apply several sequences successively.

See standard program BO:

In case of a chronic disease it is important to take into consideration that a

patient with Lyme disease infection often has complex secondary reactions. By a Lyme infection there can be formed autoimmune and auto-aggressive diseases. For chronic diseases and their consequences a BO-Chip application should be used very carefully and their parameters should be weighed carefully.

A Lyme disease can be the cause of many neurological, rheumatic or other diseases associated with an immune deficiency. For their treatment the BO-Chip can be extremely helpful. In fact, in a Lyme infection, the so-called chameleon among all pathogens, dozens of symptoms can be found.

Therapy-supporting recommendations:

- Lyme disease often hides itself behind a load by synergetic coupled parasites. Test and treat these pathogens.
- On the BO-Chip there are frequencies integrated for all pathogens that may be responsible for the Lyme disease.
- Make sure to have a good balance.
- Practical experience showed that Samento in liquid form is very effective as an important additive to support the Lyme disease therapy:
 - Samento 1x 8 drops daily
 - Nutramedix Stevia 2x 30 drops daily
- A Vitamin D3 deficit should definitely be compensated to strengthen the immune system:
 - Mannayan Vitamin D3 intensiv+ 1x 1 tabl. daily
 - Mannayan Vitamin D3 & K2 Ultra+ 1x 1 tabl. daily

BR (Bio-regeneration)

Stimulates bio-regeneration

At a glance

Relief in cancer and other biodegenerative loads

For self-help:

Supporting ChipCards:

- **TUM** TCM-ChipCard
- **DTX** activates excretion and detoxication, 2 times weekly.
- **Diamond Shield Program** Basic balancing of energy levels
- **4W (4 Walls)** boosts the unspecific immune system
- **ImVir**, 2 times weekly
- **ImPar**, 2 times weekly
- **BiBlo**, 2 times weekly
- **Crystal** for a deep regulation of the entire meridian system

Intensification:

- **CLST** against all clostridial species
- **FVE** opening the intracellular space
- **HSX** (herpes and Epstein Barr family)
- **EBV** Epstein Barr Virus
- **IM** immunomodulation
- **ASP** Aspergillus
- **CAN** Candida
- **EG** (4 flukes)
- **Healing Frequency** search cancer
- **Frequency Compendium II** searchindex cancer

Recommended literature:

A. E. Baklayan: *Krebs - Therapie und Forschung* (a german script concerning cancer therapy and research)

Tamara Lebedewa: *Krebserreger entdeckt (Carcinogens discovered, german)*

Hulda R. Clark: *The Cure for All Advanced Cancers*

Mode of Action

Today we know that in the development of cancer countless pathogens such as roundworms, Trichomonas, Fasciolopsis buski, Fasciolopsis miracidia and in particular Clostridium, Candida and Aspergillus are significantly involved. The BR-Chip serves to specifically fight against all these pathogens. In her book "Krebserreger entdeckt" (Carcinogens discovered, german), the Russian researcher Tamara Lebedewa illuminates the link between trichomoniasis and the development of cancer in more detail.

Application		Time (minutes)
Ascaris 1-3	each	03:00
Ascaris larvae		02:00
Trichomonas		14:00
Trichomonas 2		03:00
Fasciolopsis buski		05:00
Clostridia 1		03:00
Clostridia 2		02:00
Clostridia 3		02:00
Clostridia 4		03:00
Candida		03:00
Aspergillus		03:00
		49:00

Before the daily application of the BR-Chips you should be informed in detail about the scope and background of the therapy. To this end, we recommend you to read the further german script "*Krebs – Therapie und Forschung*" (*Cancer – Therapy and Research*) by Alan E. Baklayan or the books published by Dr. Hulda Clark on this topic.

Additional application

The application of the BR-Chips can help to ensure that the cancer does not form again after a conventional treatment such as chemotherapy, and is suitable for prevention in general cancer risk or on patients with positive pre-cancerose results.

Please note: The BR-Chip is used only for the support of cancer therapy. In addition, the individual, further aspects of the disease must be considered individually and therapeutically.

CAN (Candida)

Permanent removal of Candida infections

At a glance

Refined developing sustainable exempt from Candida

Bioenergetic testing by therapist

Wherever Candida is detected, at every conceivable Meridian, particularly on joints, lymph, nervous system

For self-help:

Supporting ChipCards:

- **DTX** activates excretion and detoxication
- **Diamond Shield Program** Basic balancing of energy levels
- **FVE** opening the intracellular space
- **IM** immunomodulation

Intensification:

- **Healing Frequency** search term candida
- **Frequency Compendium II** searchindex candida

Recommended literature:

A. E. Baklayan: *Parasites - the hidden cause of many diseases*

About the mode of action

To determine the long list of suitable frequencies in the development of this ChipCard, all Candida species were systematically tested. Due to the ChipCard application the Candida spectrum may be completely covered. The body can store the generated frequencies through the therapy over four days in the body. For this reason, a corresponding application in the four-day cycle has proven particularly useful to elicit a sustained, daily renewing effect without stressing the body itself too strongly.

Application	Time (minutes)
Day 1 1-5	20:00
Day 2 6-10	17:30
Day 3 11-15	20:00
Day 4 16-19	15:00

The Candida-Chip treatment is ideal to support all therapies of symptoms, for which an integral part is to be identified to be caused by a candida infection.

Please note: The application of Candida ChipCard can only be recommended in conjunction with a candida diet, otherwise the entire therapy is inconclusive.

Also required are the use of natural, antifungal preparations:

- Mannayan Cand+ 1x 1 caps. daily
- Colloidal silver water 1x 1 Tbsp. daily (no metal spoon)
- Cumanda 2x 30 drops daily
- Clove oil composite 1x 5 drops daily
- Grapefruit seed extract 3x 2 tabl. daily

For more detailed informations please refer to the recommended literature.

Results of the Candida therapy

The CAN-Chip application has proven itself very well as a supportive measure for Candida therapy. The duration of the total therapy could be reduced by about one third. The patient has to stick definitely to his diet for the entire duration of therapy.

For some patients, an immediate onset of relief of various Candida symptoms such as itching or irregularities could be determined in the stool. Insofar as the patients stick to the recommendations no side effects (Herxheimer syndrome) could be observed.

The Candida Diet to remove the Candida fungus

Renounce completely to any form of sugar, fruit sugar, jam, maple syrup, honey, chocolate and sugary sweets, and sugar-free sweeteners such as saccharin, aspartame and cyclamate for the duration of the diet. Also prohibited are raw or cooked fruits, fruit juices, soft drinks, coke or alcoholic drinks.

The consumption of pasta and white flour products is not allowed. Crisp bread and whole grain bread, unsweetened cereal and rice should be taken only moderately.

Look out for hidden sugars when you shop - the summary shows the often surprising content of simple carbohydrates in foods (e.g. cashews, ketchup). Do not eat pork or breaded meats when eating meat and sausages.

Fish and eggs are allowed just like milk, cheese, unsweetened sour milk products, butter and oils. Eat potatoes, pasta made from legumes (in the "gluten-free assortment" of supermarkets), raw and cooked root vegetables, radish, legumes, turnips, cucumbers, tomatoes, spinach, raw and cooked sauerkraut (lactic fermented cabbage), onions, garlic, garden herbs, spices, nuts and salt. Only drink unsweetened tea or coffee and water or mineral water.

CLST (Clostridia)

At a glance

Relief in cancer and other degenerative loads

Bioenergetic testing by therapist

Large intestine, site of cancerogenous load

For self-help:

Supporting ChipCards:

- Prepare with **BiBlo** to eliminate bioenergetic blockades
- **DTX** activates excretion and detoxication
- **4W (4 Walls)** boosts the unspecific immune system
- **Multi** multi-resistant germs
- **Diamond Shield Program** Basic balancing of energy levels
- **Z (Teeth)** in tooth foci
- **BR** in cancerogenous occurrence / Preneoplasia
- **IM** (Immune-Modulation)

Intensification:

- **Healing Frequency** search term clostridia
- **Frequency Compendium II** searchindex clostridia

Recommended literature

A. E. Baklayan: *Krebs - Therapie und Forschung* (a german script concerning cancer therapy and research)

Tamara Lebedewa: *Krebserreger entdeckt (Carcinogens discovered, german)*

Hulda R. Clark: *The Cure for All Advanced Cancers*

About the mode of action

Clostridium, based on current knowledge, play a crucial role in degenerative diseases. The clostridial ChipCard fight these spore-forming pathogens highly targeted. It includes frequencies from the clostridial family.

Application

CLST 1-3

Time (minutes)

20:00

Recommended apply 1x daily

Other applications

The CLST ChipCard is a valuable support for cancer therapy. Also the CLST ChipCard for intestinal flora therapy and stove therapy in dead and root-treated teeth has proven to work out.

According to the findings from my practice may slow cancer growth in certain cases, the clostridial therapy.

Therapy tips

For focal therapy and degeneration of the intestinal flora the addition of the following supplements has been proven to work well:

- Samento 1x 8 drops daily
- Colloidal silver water 2x 1 tbsp daily (no metal spoon)
- Mannayan Flor+, 1x 1 caps. daily
- Mannayan +, 1-2x 1 caps. daily
- Oregano oil

Supplementary information

The german script "Cancer - treatment and research" by A. E. Baklayan with numerous findings on cancer is recommended. This script was written specifically for cancer patients of the medical practitioner practice Baklayan and includes the status of the therapy as well as most lectures by A. E. Baklayan about the subject.

Crystal

A revolution in application of Zapper technology

At a glance

Deep regulation of the entire meridian system

Bioenergetic testing by therapist

Any meridian or acupuncture point

As a universal application program to support all ChipCards 2x weekly

As ChipCard or preprogrammed in the Crystal Zapper IE EMS

Application

Crystal 1-2

Time (Minutes)

100:00

2 sequences with a total of 252 frequency programs

As Chipcard program or preprogrammed in the special Crystal-Zapper-Model – a Diamond Shield Zapper IE EMS with Crystal-Program and additional functions.

Development of the Crystal Zapper

After Hp Baklayan discovered that the frequencies of all the meridians of Chinese acupuncture are related to each other in a mathematical ratio, he developed the Harmonical Frequency Procedure. The continuation is the development of the Crystal program. His further research confirmed his suspicion that all points of an acupuncture meridian follow these laws.

Biology is known to consist of structures that must remain in order. Around each acupuncture point normally there is an ordered electric field.

These fields are disturbed by anything that does not belong, i.e. all possible pathogenic factors.

To restore these arranged fields that are necessary for the proper functioning of all bodily functions, you only need to let them vibrate in the frequencies that can reappear and structure this arranged field.

To reinforce this effect modulations and other levels have been integrated. Then these “arranging frequencies” were gradually lined up with exact mathematical time lengths and pauses.

In applying this program all the structures of the entire body are again rearranged.

These specific frequencies of the acupuncture points of the body are used to restore the lost structures of the tissue, namely one area after the other, with the acupuncture point as the center. Many points are internally connected to

other branches of the meridian system. This makes the application reach the deepest layers of the body.

In Asia for thousands of years it has been known that in the area below the navel, the “sea of energy” is located, as a reservoir of energy for the entire body, by which all meridians are supplied.

Thanks to a special belt the frequencies in the form of micro currents are directly fed into the “sea of energy” and resonate with the corresponding point, which organizes its surroundings.

Bioenergetic tests have shown that in the areas around the acupuncture points all structures (tissue and metabolism) arrange themselves, in other words, all the foreign structures cannot exist there any longer, i.e. environmental toxins, parasites, bacteria, Borrelia, viruses, molds. Nothing that does not belong there can exist there.

Mode of action:

The effect is gentle, because during daily use the structures of the body are rearranged for a period of time, which leads to the fact that within these structures all sickening loads cannot stay, as they are not part of this structure (analogous to Chladni figures). This creates a deep and thorough cleansing and detoxication of the whole body. The structure of the tissue regains its crystalline arranged structure: therefore Hp Baklayan named it “Crystal program”.

Explanatory model of the mode of action:

Bioenergetic tests have repeatedly shown that all loads when retested 24 hours after the application of the Crystal Zapper program, always reduce approximately 10 percent compared to the value of the previous day. This process seems to continue for a very long time. In other words, the longer it is applied, the deeper is the effect.

Every day or every second or third day on which this Zapper or this program is used, brings a further and deeper cleansing of the body.

It has been shown that after the coarser loads in the body are not testable anymore because the general structure of the body has adjusted, the next hidden places where these loads stay, are reached.

Typical locations are the intestinal pockets under the layers of fecal materials, sinuses, appendix, tonsils, teeth, middle ears, lymph nodes, joint cartilage (which only have little blood supply). After the outer layers of the tissue have been arranged, it is time for these deeper layers.

In a world in which the loads and environmental toxins increase every day and without ceasing, we should definitely rearrange the structures of our body and daily promote detoxication. We need to detoxify and cleanse the body constantly. The Crystal Zapper program is an ideal way to detoxify and structure the body more deeply from within.

The difference between the Diamond Shield and the Crystal program:

While the Diamond Shield program, as the name indicates, is a basic treatment to protect the body from the outside against all influences as a shield by flushing the meridians, creating a better flow, and through the energy network of the body readjusts healing processes, the Crystal program assigns around each acupuncture point of each meridian all structures and the ones with which this meridian is connected. It detoxifies this area further and deeper.

The Crystal program is available in two different forms:

From a Crystal ChipCard or as preinstalled standard program on the special Crystal Zapper. This device contains all programs and features of the Diamond Shield Zapper and additionally the Crystal program, a memory function (all can be resumed where you stopped at the last session), a keylock and an alarm clock function (Up to two different sequences can be set for an automatic start. The start can be set either with or without audible signal; it can also, for example, be set for every other day.)

When using the Crystal Zapper the user does not necessarily need to be grounded because the programs run with micro currents, i.e. well below 1 Volt, and no negative electric charges and radicals can arise here. So you can run around with the invisible belt or even go to bed at night.

Environmental toxins and pathogens hiding in the deepest layers are reached, and gradually and gently discharged until the intracellular space is reached. For this reason and according to similar bioenergetic testings it may take up to 8 months until the cleaning process is complete.

For further information see

<http://diamondshieldzapper.com/en/diamond-shield-crystal-zapper/>

CV (Corona)

At a glance

Activate protection against all CV types

Bioenergetic testing by therapist:

Viruses can be tested well on the nervous system, the hormone system and the lymphatic system as well as on liver and lung: nerve system, TW, lymph, liver and lung meridian. Open the intracellular space with the FvE-ChipCard for 7 minutes prior to this.

For self-help:

Supporting ChipCards:

- Prepare with **BiBlo**
- **FvE** opening of the intracellular space
- **DTX** activates excretion and detoxication
- **ImVir** strenghtens the immune system against viruses
- **Lu-m (Lung)**
- **4W (4 Walle)** boosts the unspecific immune system
- **Diamond Shield Programm** Basic balancing of energy levels
- **Multi** multi-resistant germs

Intensification:

- **Healing Frequency** search term Corona
- **Frequency Compendium II** searchindex Corona

Application

CV 1-22

Time (minutes)

18:30

The ChipCard should be used 2x in a row if needed.

Therapy-supporting recommendations:

As therapy-supporting agents with specific effect against viruses, we primarily recommend Samento, Takuna, Houttuynia, Mannayan Weihrauch (Boswellia) and Mannayan Glucan.

Antiviral effect:

- Mannayan Glucan+, 1x daily. 1 capsule
- Takuna, 2x daily 8 drops
- Samento, 2x daily 8 drops
- Houttuynia , 2x daily 15 drops
- Mannayan Boswellia, 1x daily 1 capsule
- Zinc Mannayan Zink+, 2x daily 1 tablet, in acute cases 1x5 capsules
- Mannayan Vitamin D3+K2 Ultra+ 1x daily 1 capsule with 4000 IU
- Mannayan Reg+ 1x daily 1 capsule

For glutathione supply:

- Mannayan Lipo-Glutathione+ 1x daily 1 capsule

DB (Diabetes)

Stabilization of blood glucose levels

At a glance

Only the proper frequency combination really supports

Bioenergetic testing by therapist

Pancreas meridian, small intestine meridian. During the application control: lymphatic system, nervous system

For self-help:

Supporting ChipCards:

- Prepare with **BiBlo** to eliminate bioenergetic blockades
- **DTX** activates excretion and detoxication
- **Diamond Shield Program** Basic balancing of energy levels
- **ASP** (Aspergillus)
- **PaReg** pancreatic regulation

Intensification:

- **EG** (4 flukes)
- **ImPar** strenghtens the immune system against parasites
- **CAN** (Candida) enhanced therapeutic effects
- **Healing Frequency** search diabetes, pancreas
- **Frequency Compendium II** searchindex diabetes, pancreas

Recommended literature:

A.E. Baklayan: *Parasites – The Hidden Cause of Many Diseases* Dr. Hulda Clark: *The Cure for All Diseases* (especially Chapter *Diabetes, Fluke Disease, Diabetic Diet and Sorghum mold*)

About the mode of action

The frequencies of the DB-Chip are active against pathogens and loads that very often are accompanied by diabetes, such as Coxsackie virus, Aspergillus and Candida fungus (in the pancreas).

For successful treatment there also is special frequency aiming at the pancreaticum on the Eurytrema, the pancreas fluke. According to test results, each patient affected by youth or adult diabetes is affected by this fluke, which is found exclusively in cows under normal circumstances. This discovery was made by Dr. Hulda Clark and wrote about it in her book "The Cure for All Diseases".

The Eurytrema pancreaticum intervenes in glycolysis or in the entire sugar metabolism in the human organism. For this reason, the fight against this leech causes some people a quick stabilization of the sugar level. Considering a Diabetes-Chip application should always be accompanied by a detailed, daily held glucose measurement.

Application	Time (minutes)
Diabetes 1-23	71:00

Additional applications:

- Since the Eurytrema pancreaticum often participates in the formation and spread of cancer, the DB-Chip can also support a cancer treatment. You can simply try out similar results.
- The program can also successfully help treat infections caused by Coxsackie viruses.

Therapy-supporting recommendations:

- Always make sure to couple the pancreas together with the Candida, otherwise quickly one of the two loads can be overlooked.
- The DB-Chip may affect the actual need for insulin in insulin-dependent patients. You should therefore not neglect to take a daily measurement of your sugar levels in order to prevent hypoglycaemia.
- Chromium supports the body's sugar metabolism:
 - o Mannayan Chrom+, 1-2x 1 caps. daily or
 - o Mannayan B Aktiv+ 1x 1 caps. daily or
 - o Mineralvit Gold-Drops 1x daily 10 Drops
- Biotin, MSM and the amino acids L-arginine and L-ornithine are involved in the regulation of blood sugar levels:
 - o Mannayan Biotin+, 1x 1 caps. daily
 - o Mannayan MSM or MSM Kombi, 1x 1 caps. daily
 - o Mannayan L-Arginin & L-Ornithin+, 1-2x 1 caps. daily
- Mannayan Power Jod+, 1x 1 caps. daily
- Mannayan Zink+, 1x 1 tabl. daily

You can find information on the elimination of heavy metals in the book "*Parasites – The Hidden Cause of Many Diseases*".

DS2 (Diamond Shield)

At a glance

Using the Meridian frequencies of the Diamond Shield Program one by one

Bioenergetic testing by therapist

Meridians at loaded region

For self-help:

Supporting ChipCards :

- Prepare with **BiBlo** to eliminate bioenergetic blockades
- **DTX** activates excretion and detoxication

Intensification:

- **Crystal** for a deep regulation of the entire meridian system

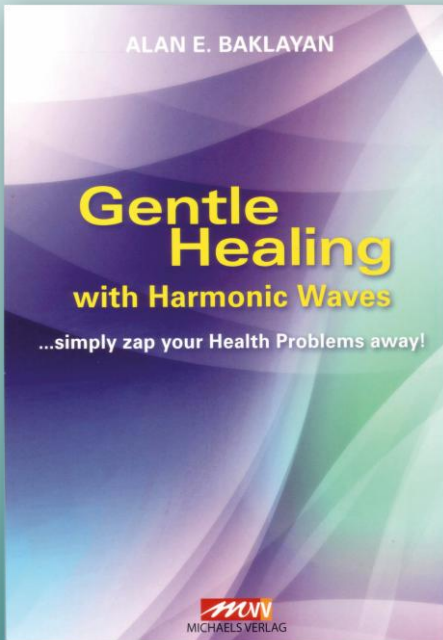
This ChipCard contains the Diamond Shield program and allows to call at each single meridian. For example in pain therapy with electrodes position directly on the meridian.

Application	Time (Minutes)
Lu - Lung	2:30
LI - Large Intestine	2:30
St - Stomach	2:30
SP - Spleen/Pancreas	2:30
He - Heart	2:30
SI - Small Intestine	2:30
Bl - Bladder	2:30
Ki - Kidney	2:30
Pe/Ci - Pericard/Circulation	2:30
TW - Threefold Warmer	2:30
Gbl - Gallbladder	2:30
Lv - Liver	2:30
	30:00

In pain therapy it is useful to encircle and suffuse the loaded region with the electrodes. If the pain point is located directly at a meridian's course or bioenergetic testing shows a disturbance of this meridian the single frequency can be applied. The electrodes are placed at the initial and endpoint of the meridian. The meridian is to be flowed through in the direction of flow. The phase (red) therefore comes to the starting point, the neutral (black) to the end point of the meridian.

| ADVERT |

BOOK: GENTLE HEALING WITH HARMONIC WAVES



... SIMPLY ZAP YOUR HEALTH
PROBLEMS AWAY!
From HP Alan E. Baklayan

An important foundational work of bioresonance and frequency therapy about basic philosophy, methods and the different application possibilities of frequency therapy.

First published in 2002, HP Alan E. Baklayan's practical guide "Gentle Healing with Biofrequencies" (original title) is now available in the 3rd revised and expanded edition, as an introduction to the principles of use with the new generation zapper, the Diamond Shield IE.

ISBN 978-3-89539-929-9

DTX (Detox)

Important facts about detoxication

At a glance

Regular detoxication is a prerequisite for success

Bioenergetic testing by therapist

Meridians large intestine, kidney, lymph and liver

For self-help:

Supporting ChipCards

- **Diamond Shield Program** Basic balancing of energy levels
- **FvE** opening the intracellular space

Intensification:

- **LY** Lymph
- **L** Liver
- **Ni** Kidneys
- **Healing Frequency** search detox
- **Frequency Compendium II** searchindex detox

Preparations, recommended literature

Support the elimination pathways in their function. More information you can find in

A. E. Baklayan: Gentle Healing with Harmonic Waves – simply zap your Health Problems away!

and A.E. Baklayan: *Parasites – The Hidden Cause of Many Diseases*

About the mode of action

The DTX-Chip contains the most important TREF frequencies for detoxication of intestine, kidney, lymph and liver. The abbreviation TREF here refers to "Terrain-Regulation with Electrical Frequencies". These frequencies, which we rediscovered from ancient literature, have the ability to optimize systems such as the acid-base balance, hormone regulation, the blood, the nervous control and the sympathetic and parasympathetic.

How to use

We recommend you to apply the DTX-Card for a detoxication therapy once per day at an intensity of 4.2 volts. Should there be other toxins discharged from your body by another therapy, please use the DTX-Card only 2 times per week with 4.2 volts in order not to limit the effectiveness of this therapy.

Application	Time (minutes)
Kidney 1	03:30
Colon 1	03:30
Kidney 2	03:30
Liver 1	03:30
Colon 2	03:30
Gallbladder 1	03:30
Lymph 1	03:30
Gallbladder 2	03:30
Lymph 2	03:30
Liver 2	07:00
Kidney 3	03:30
Liver 3	03:30
	45:30

Additional uses

A detoxication makes sense with all therapies almost without exception. If testings show, for example, that several meridian points are weakened, you should go through this chip in any case.

Results and experience of the Detox therapy

Two therapists independently from each other reported that horses very often reacted to a regular DTX-Chip treatment with immediate urination. This observation indicates that the DTX-Chip directly stimulates the excretion of toxins that have quietly accumulated within the body.

A cancer patient always used the DTX-Card treatment directly after their chemotherapy. Because of the color and smell of her urine she realized that she was directly excreting the chemotherapeutic agents again. In direct correlation it could be found out that the chemotherapy-induced side effects declined sharply. With the regular application of DTX-frequencies the patient felt much better than before.

Therapy-supporting recommendations:

- Free excretory routes are an important prerequisite for successful detoxication. The intestinal activity can be supported by the following means:
 - o Mannayan Colo+, 1-2 times daily 1 capsule
 - o Mannayan Clean+, 1-2x daily 1 capsule
 - o Mannayan Gamma+, 25g daily in 200 ml cold water
 - o Mannayan Flor, 1x daily 1 capsule
 - o Mannayan Lact+, 1-2x daily 1 capsule
- In order to facilitate the detoxication process during the therapy, you can support the organs with various substances such as herbal extracts for the

kidneys and liver.

Specifically:

- o Mannayan Detox+, 1x daily 1 tabl.
 - o Mannayan Reg+, 1-2x daily 1 caps.
 - o Derma-Clean L (Liver), 2 - 3x daily 1-2 tsp
 - o Derma-Clean N (Kidneys), 2 - 3x daily 1-2 tsp
 - o Bitterstern, 2x daily 8 drops
 - o Mannayan (B)remsen, 2x daily 20 drops in a glass of water or organic bear's garlic seasoning
- Other supportive means of mobilizing toxins in the body and binding in the intestines:
- o Algas, every 3 days 10 drops in 120 ml water
 - o Mannayan coriander seasoning, 2x daily 20 drops in a glass of water
 - o Sealantro, every second day 40 drops in a glass of water before a meal
 - o Mannayan Lipo-Glutathion+ 1x daily 1 cap.
 - o Mannayan MSM or MSM Combi 1x daily 1 caps.
 - o Burbur Detox
 - or Burbur-Pinella, 1-2x daily 15-30 drops
 - or Pinella, 1-2x daily 10 drops
- Vitamin C improves the detoxication of the liver:
- o Mannayan Vitamin C+, 1x daily 1 tabl.
- Mannayan Zink+, 1x daily 1 tabl.

The DTX-ChipCard is one of the most commonly used bio-chips. Numerous colleagues attest positive effects in all the seminars. It can be used with all signs of poisoning, congestion and blockades such as dry skin or pale urine.

EBV (Epstein Barr Virus)

The final out for Epstein Barr

At a glance

Activation of protection against all types of EBV

Bioenergetic testing by therapist:

Viruses can be tested well on the nervous system, the hormone system and the lymphatic system as well as on liver and lung: nerve system, TW, lymph, liver and lung meridian. Open the intracellular space with the **FvE-ChipCard** for 7 minutes prior to this.

For self-help:

Supporting ChipCards

- Prepare with **BiBlo** to eliminate bioenergetic blockades
- **FvE** opening of the intracellular space
- **DTX** activates excretion and detoxication
- **4W (4 Walls)** boosts the unspecific immune system
- **ImVir** strenghtens the immune system against viruses
- **Diamond Shield Program** Basic balancing of energy levels
- **HSX** (Herpes and Epstein Barr family)
- **Multi** multi-resistant germs
- **Müde** ("tired") TCM-ChipCard for great fatigue

Intensification:

- **Healing Frequency** search term EBV, Epstein barr
- **Frequency Compendium II** searchindex EBV, Epstein barr

Recommendation:

A. E. Baklayan: *Über die Behandlung des Epstein-Barr-Virus in seiner Praxis mit der Harmonikalischen Schwingungstherapie, Interview in german on YouTube*

Recommended literature

A. E. Baklayan - *Gentle Self-Healing with harmonic waves – A practical Manual (chapter "Lyme disease and Epstein Barr")*

About the mode of action: The EBV-Chip contains very effective frequencies against EBV and frequencies for the activation of the immune system specifically against viruses.

Application

EBV 1-6

Time (Minutes)

21:00

Please note: At the beginning of therapy symptoms can get worse in patients who carry EBV. In such case please discontinue the use of the EBV-sequence and start the treatment after symptoms have resolved.

Additional applications:

- Cytomegalic inclusion disease, Epstein Barr Virus and Herpes virus may provoke symptoms in all kind of different forms, such as, for example, chronic fatigue, exhaustion and swelling of lymph nodes. In these cases it can be of use to individually test to what extent the EBV-Card can produce relief.
- Often EB viruses can be identified as contributory cause of skin burning sensation.

Therapy-supporting recommendations:

- In the Baklayan clinic Takuna as additional remedy for the treatment of the viral load has proven to be very successful.
- At the same time we recommend you to strengthen your body's own immune defense by undergoing a basic therapy with the help of the Diamond Shield-Program, additionally the solution of bioenergetic blockades with the help of the BiBlo-Card, as well as a detoxication supported by the DTX-Chip.
- Please note: Because of the fact that Herpes viruses occur inside the cells you should open the intracellular space with FvE prior to the testing.
- Antiviral effect
 - o Mannayan Glucan+, 1x daily 1 capsule
 - o Takuna, 2x daily 8 drops
 - o Samento, 2x daily 8 drops
 - o Houttuynia , 2x daily 15 drops
 - o Mannayan Boswellia 1x daily 1 capsule
 - o Mannayan Lipo-Glutathion+ 1x daily 1 caps.
 - o Zinc Mannayan Zink+, 2x daily 1 tablet, in acute cases 1x5 capsules
- The Epstein barr virus blocks vitamin D3 receptors in the intestine. This can lead to a vitamin D3 deficiency, which should absolutely be compensated:
 - o Mannayan Vit. D3, 1x daily 1 capsule
 - o Vitamin D3 intensive+, 1x daily 1 tbl.
 - o Vitamin D3 & K2 Ultra+, 1x daily 1 capsule with 4000IU

EG (4 flukes)

Strengthening against parasites

At a glance

Generally activate the immune system against flukes

Bioenergetic testing by therapist

Symptomatically according to the diagnosis

For self-help:

Supporting ChipCards:

- Prepare with **BiBlo** to eliminate bioenergetic blockades
- **Diamond Shield Program** Basic balancing of energy levels
- **ImPar** strenghtens the immune system against parasites

Intensification:

- **BaW** Tapeworms
- **L** Liver
- **Healing Frequency** search term fluke, Fasciolopsis buski, Fasciola hepatica, Clonorchis sinensis, Eurytrema pancreaticum
- **Frequency Compendium II** searchindex fluke, Fasciolopsis buski, Fasciola hepatica, Clonorchis sinensis, Eurytrema pancreaticum

Recommended literature:

A.E. Baklayan: *Parasites – The Hidden Cause of Many Diseases*

About the mode of action

The EG-Chip contains frequencies of the 4 most important flukes

- Fasciolopsis buski
- Fasciola hepatica
- Clonorchis sinensis
- Eurytrema pancreaticum

and frequencies for the activation of the immune system specifically against parasites.

Application

EG 1-25

Time (Minutes)

41:00

Results of the therapy

The high effectiveness of the EG-ChipCard was confirmed by practical results. During the course of the therapy a rapid improvement of the test values against parasites occurs visibly.

Therapy-supporting recommendations:

- Flukes certainly should not be underestimated in the development of many diseases. Jointly with other factors they depict the main cause for chronic symptoms, such as increased venosity, allergies, menstrual pain, migraines, rheumatism and intestinal disorders.
- Alongside therapy we recommend you a diet that, if possible, avoids animal protein because it serves as the main aliment for parasites.
- Effective herbal remedies, such as energized Noni juice, Juglandis or Papain capsules, which are used effectively against parasites can successfully support the therapy.
- Further information can be found in the literature recommendation "A. E. Baklayan - Parasites: The secret pathogens - Diagnosis - Treatment - Self therapy".
 - o Papain cure (is explained with the ChipCard Asthma)
 - o Rascal, 3x daily 2 caps.
 - o Mannayan Black walnut tincture, 1x daily 2 tablespoons in plenty of water
 - o Derma-Clean Juglandis extra, 3x daily 1 tablespoon
 - o Mannayan Clean+, in the evening 1 to 3 caps.

EMT (Endometriosis)

Bioenergetic testing by therapist:

3E meridian

For self-help:

Supporting ChipCards

- **DTX** activates excretions and detoxications
- **Diamond Shield program** basic balancing of energy level
- **BiBlo** removes bioenergetic blockades
- **ImPar** strengthens the immune system against parasites
- **EG (4 flukes)**

Application

1-21

Time (minutes)

50 Min

Endometriosis, the formation of endometrium-like tissue outside the uterine cavity, can lead to painful menstruation, chronic inflammatory processes, and scarring that can damage neighboring organs of the uterus.

The Emt ChipCard contains 12 Harmonical Frequencies and 5 frequencies covering the main suspected pathogens that may be involved in endometriosis (Enterobius vermicularis, the child pinworm; Fasciola hepatica, the liver fluke; Gardnerella; Ascaris; Trichinella; Trichomonas and Chlamydia).

About the mode of action

The first 12 sequences regulate the hormone balance, among other things, via liver, spleen/pancreas and triple warmer meridian with programs from the Harmonical Frequency System. These frequency programs work specifically against excessive menstruation and menstrual cramps.

Therapy-supporting recommendations

Papain cure

- Before taking the papain-capsules you should not have eaten for at least 2 hours.
- Then take 1000 mg of papain every hour - for 5 hours.
- Two hours after the last dose you can eat again as usual, but low in protein.
- Continue taking the daily dose for 2, 4, or 6 days, and then pause for 2, 4, or 6 days accordingly.
- Reinforcement of the cure: laxative the night before

Gentle therapy with biofrequencies

- Reduce the daily dose in case of severe reactions such as abdominal pain or tenderness.
- Repeat this procedure once a month until your discomfort subsides significantly.
 - Mannayan Cyst+, 1-2x daily 1 capsule
 - Derma-Clean Juglandis extra, 2-3x daily 1-2 tsp.
 - Mannayan Black walnut tincture 1x daily 2 tsp. in plenty of water
 - Mannayan Wormwood 1x daily 1 capsule
 - Mannayan Magnesium-Citrat+ 1x daily 1 capsule
 - Mannayan Mineral salt 3x daily 1 capsule
 - Derma-Clean N (Kidneys), 2 - 3x daily 1-2 tsp.

FVE (Result of emotions)

Compensate for emotional distress, adjusting the cancer metabolism

At a glance

Frequencies to reduce mental stress, stop cancer metabolism

Bioenergetic testing by therapist

Ampule FvE (Testkits Internal Environment) and Detoxication according to Clinical Diseases I Ampoules 22 - 23

For self-help:

Supporting ChipCards:

- Prepare with **BiBlo** to eliminate bioenergetic blockades
- **DTX** activates excretion and detoxication
- **IM** stimulates the immune system
- **ImPar** supports the immune system against parasites
- **ImVir** supports the immune system against viruses
- **Diamond Shield Program** Basic balancing of energy levels

Intensification:

- In addition with cancer: **BR** stimulates bioregeneration
- **Healing Frequency** search term trauma, cancer
- **Frequency Compendium II** searchindex trauma, cancer

About the mode of action

The stored frequencies on the card FVE cause an opening of the intracellular space, a reduction in the metabolism of cancer as well as a restoration of collapsed tension within the cellular network. The tension of the cell assembly may have been reduced under the influence of different kinds of stress and exhaustion even from the distant past.

Application

FVE

Time (minutes)

07:00

Increase the daily treatment time gradually up to 20 minutes

Attention! During long periods of use, take necessarily detox preparations:

- Bitterstern, 2x daily 8 drops

Treatment results:

Through deep relaxation in the patients repressed and unconscious mental blockages will be dissolved.

The cancer metabolism will be blocked.

Therapy-supporting recommendations

- Ezov, slowly increase dosage to 1x daily 8-10 drops

GewAbn (weight regulation)

Simple and natural body weight regulation

At a glance

Hormone frequencies stimulate the metabolism

Bioenergetic testing by therapist

Threefold warmer, organ degeneration meridian

For self-help:

Supporting ChipCards:

- Prepare with **BiBlo** to eliminate bioenergetic blockades
- **DTX** activates excretions and detoxication
- **Diamond Shield Program** Basic balancing of energy levels

Intensification:

- **LY** Lymphdrainage
- **Healing Frequency** search term appetite, adipositas
- **Frequency Compendium II** searchindex appetite, adipositas

The application of the GewAbn ChipCard provides a supportive measure for weight management. Kidneys as well as adrenal gland and metabolism are stimulated by the corresponding frequencies.

Application

GewAbn 1-5

Time (minutes)

each 03:00

For the supportive function of this ChipCard an intensity of 4.2 volts is enough. The application should be accompanied by a diet.

Patients with severe problems with losing weight, we recommend to remove the wheat products completely from your diet, as they often cause a blockage. Due to strict abstention of wheat products and parallel regular ChipCard treatment, usually consistent weight loss can be achieved, without gaining weight again after the diet.

Please Note: The application of the chip cannot compensate unhealthy lifestyle. Healthy eating and a time-limited diet (poor in carbohydrates) and regular exercise (3 times a week a pleasant attack of sweating) are among the absolute performance requirements for slimming.

Therapy results

We were surprised by the immediate success. Many users have told us, even without dietary changes and diet within 2 weeks to have lost 2 to 3 kg. Especially in patients who unsuccessfully tried for years to lose weight permanently, the GewAbn chip showed good results. The cause of this astonishing success is that with a weight loss blockade the weight reduction can be initiated only by the stimulation of the metabolism. Using the stimulation of the adrenal gland and the regulation of the thyroid introduced by the therapy, unnecessary waste can be burned and reduced.

Therapy-supporting recommendations:

- Vermella Slim, 2x daily 15 drops
- Mannayan Clean+, 1x daily 1 capsule
- Mannayan Deca-Mineral+, 1x daily 1 tabl.
- Mannayan Power Jod+, 1x daily 1 capsule
- Mannayan Q10+, 1x daily 1 capsule
or Q10 liquid+, 10-20 drops spread over the day
- Mannayan Colovital, 3x daily 1 chewable tablet
- Mannayan Griffonia, 1x daily 2 caps. in the evening

HB (Helicobacter)

Bioenergetic testing by therapist:

Stomach meridian

For Self-help:

Supporting ChipCards

- **DTX** activates excretions and detoxications
- **Diamond Shield program** basic balancing of energy level

In combination with:

- **Ma** for general support of gastric functions
- **Elements-ChipCard EARTH Attenuation** for dampening an overexcited stomach

Intensification:

- **Healing Frequency** Search Terms Heartburn, Gastritis, Stomach Acidity, Stomach Weakness, Stomach Ulcer, Stomach Cancer

Application

1-8

Time (minutes)

30 Min

Helicobacter pylori is a bacterium that very often colonizes the human stomach. However, under certain circumstances - especially stress and an over-acidifying diet - it can be responsible for stomach over-acidity and thus for gastritis, stomach ulcers and even stomach cancer. So not always "blowing up" right away is the very first self-help measure.

About the mode of action

The HB-ChipCard specifically attacks the bacteria hiding in the gastric mucosa with the help of Clark and Rife frequencies.

In case of hyperacidity remember to give up the classic acid-promoting foods for a while: Alcohol, sugar and white flour.

Take 3x1 daily and additionally in the evening before going to bed 1 capsule of Mannayan mineral salt. for deacidification and in between as needed for heartburn.

Therapy support recommendations:

- Mannayan Lact+ 1x daily 1 capsule
- Mannayan Bonatum 1x daily 1 capsule for overacidified stomach
- Mannayan Colloidal silver water 2x daily 1 tablespoon (no metal spoon)

He (Heart)

At a glance

Frequencies for all heart functions

Bioenergetic testing by therapist

Heart meridian

For self-help:

Supporting ChipCards

- **LY** Lymphatic drainage
- **DTX** activates excretion and detoxication
- **Diamond Shield Program** Basic balancing of energy levels
- **Relaxation Program**
- **Wellness Program**
- Prepare with **BiBlo** to eliminate bioenergetic blockades
- **Crystal** for a deep regulation of the entire meridian system

Combination with:

- **FIRE Attenuation**
in case of feeling of constriction, restlessness
- **FIRE Support**
in case of palpitation, anxiety, insomnia

Intensification:

- **Healing Frequency** search term heart
- **Frequency Compendium II** searchindex heart

This ChipCard supports the essential functions of the heart and all arterial and venous diseases, pain in the cardiac region, heart sensation of every kind.

Application

He 1-7

Time (Minutes)

21:00

Therapy-supporting recommendations:

- Mannayan Mineral salt, 1 capsule in the evening
- Mannayan Mag-Citrat+, 1x daily 1 Tabl.
- Mannayan Oligo+, 1g daily in a glass of water
- Mannayan Omega+, 1-2 times daily 1 capsule
- Mannayan Power B+, 1x daily 1 tabl.
- Mannayan Q10+, 1x daily 1 capsule
- or Q10 liquid+, 10-20 drops spread over the day
- Mannayan Reg+, 1-2 times daily 1 capsule

Hep C (Hepatitis C)

Effective elimination of hepatitis C

At a glance

Frequencies against hepatitis C and other hepatitis viruses

Bioenergetic testing by therapist

Liver meridian, lymph meridian. Viruses can be tested well on the nervous system, the hormone system and the lymphatic system as well as on liver and lung: nerve system, TW, lymph, liver and lung meridian. Open the intracellular space with the **FvE-ChipCard** for 7 minutes prior to this.

For self-help:

Supporting ChipCards

- Prepare with **BiBlo** to eliminate bioenergetic blockades
- **DTX** enables excretion and detoxication
- **4W (4 Walls)** boosts the unspecific immune system
- **ImPar** strengthens the immune system against parasites
- **ImVir** strengthens the immune system against viruses
- **Multi** multi-resistant germs
- **Diamond Shield Program** Basic balancing of energy levels
- **Crystal** for a deep regulation of the entire meridian system

Intensification:

- **L (Liver)**
- **Healing Frequency** search term hepatitis
- **Frequency Compendium II** searchindex hepatitis

About the mode of action

The Hep C ChipCard contains specially frequencies effective against Hepatitis C, which also can be employed against other hepatitis viruses.

Application

	Time (minutes)
HepC 1-5	each 02:00
HepC 6	05:00
HepC 7-9	each 02:00

Therapy results

The Hep C Chip was developed on the basis of results of therapy, after the application of the frequencies in patients with Hepatitis C, no viral load of Hepatitis C could be detected. Since then, it is applied very successfully.

Therapy-supporting recommendations:

- Note: viruses are often hidden in flukes as Fasciolopsis buski and Fasciola hepatica, which then must also be subjected to an appropriate application.

- Make sure you also take the natural antiviral agents Samento, Takuna, Houttuynia, Mannayan Boswellia and Mannayan Glucan during the treatment.

- Mannayan Glucan, 1x 1 tabl.
- Takuna, 2x 8 drops
- Samento, 2x 8 drops
- Houttuynia , 2x 15 drops
- Mannayan Boswellia 1x 1 tablet
- Zinc Mannayan Zink+, 2x daily 1 tablet, in acute cases 1x5 capsules
- Mannayan Vitamin D3+K2 Ultra+ 1x daily 1 capsule with 4000 IU
- Mannayan Lipo-Glutathion+ 1x daily 1 caps.

HNO (Ears-Nose-Throat)

Interference-free Ears-Nose-Throat-area

At a glance

Shortening of a bacterial infection

Bioenergetic testing by therapist

Nervous system, Lymphatic meridian, Lung meridian

For self-help:

Supporting ChipCards

- Prepare with **BiBlo** to eliminate bioenergetic blockades
- **DTX** activates excretion and detoxication
- **4W (4 Walls)** boosts the unspecific immune system
- **Multi** multi-resistant germs
- **ImVir** strengthens the immune system against viruses
- **Diamond Shield Program** Basic balancing of energy levels
- **Co-m** Cold Program
- **LY** activates lymphatic drainage

Stay earthed **for** 50 minutes after the end of the program.

Intensification:

- **Healing Frequency** search term cold, “sinus”
- **Frequency Compendium II** searchindex cold, sinus, throat, etc.

Recommended literature

A. E. Baklayan - *Gentle Self-Healing with harmonic waves – A practical Manual (chapter “Emerging colds”)*, - *Gentle healing with Harmonic Waves (chapter “Fit and vital with the Diamond Shield Zapper”)*

This ChipCard contains classical frequencies as Streptococci and Staphylococci for the treatment of bacterial infections. Suggestions by different therapists who were looking for new therapeutic options for children motivated us to develop this ChipCard.

Application

HNO 1-7

Time (Minutes)

each 05:30

How to use

- In case of acute infection the chip can be applied 2 times a day. In doing so use only the maximum of intensity at which no tingling sensation is noticeable. Take particular care of the child’s delicate skin on which redness can be caused easily. In case of doubt reduce the intensity to 1 Volt.

- If the sinuses are unclogged to the degree of the possibility of a removal of the final bacterial products, a quick relieve of symptoms will occur. In this case a treatment can be carried out 3 times a day.
- In case of chronic infections as, for example, suppurative sinusitis and suppurative otitis media apply the chip once a day. This also applies to the times free of symptoms because this is the only way that it will be possible to permanently eliminate the bacterial source of infection.

Please note: In case of deep-rooted infections, for example, in the area of the inner ear or the bones of the frontal sinus the drainage via the lymphatic system needs to be supported. For this approach the intake of Derma-Clean Ly (Lymph), Mannayan Mineralvit Gold and Mannayan Mineralsalz is particularly suitable as well as drinking lots of water, a detoxication using the DTX-Card and the intake of supplements that supports the kidneys and the liver, e.g. Derma-Clean L (Liver) and Derma-Clean N (Kidneys).

Additional applications: The programs of the HNO-Chips are highly suitable for the treatment of discomfort of all kinds that are caused by a bacterial coccal infection, as, for example, a cold, an abscess, a mucosal infection, as well as an infection in the eyes, knees and joints, kidney inflammation and pneumonia.

Results of the therapy: In my seminars pediatricians and doctors repeatedly tell me of their success during the treatment of infections in children with this ChipCard. According to information received from an ENT-specialist he uses them regularly with large success in his infantile patients.

Therapy-supporting recommendations:

- Before applications against staphylococci and streptococci frequencies as well as other frequencies listed in the Frequency Compendium II or Healing Frequency and before the so-called focus therapy, start with nasal douches and high vitamin B2 doses.
- Activate lymph detoxication and lymph drainage through the ChipCard LY and the intake of Derma-Clean Ly (Lymph), Mannayan Vitamin C+ and Echinacea.
- Intake of antioxidants: Mannayan Antioxi+, 1x 1 tablet daily, Mannayan Beta+ 1x 1 capsule daily
- Radicals are eliminated by staying grounded for 50 minutes after application.
- Barberry, 2x daily 30 minutes before meal 15-30 drops in half a glass of water
- Banderol, 2x daily 1-30 drops (slowly increase dosage) in 120 ml water

HSX (Herpes simplex)

The final out for Herpes

At a glance

Activation of protection against all types of herpes

Bioenergetic testing by therapist

Viruses can be tested well on the nervous system, the hormone system and the lymphatic system as well as on liver and lung: nerve system, TW, lymph, liver and lung meridian. Open the intracellular space with the **FvE**-ChipCard for 7 minutes prior to this.

For self-help:

Supporting ChipCards

- Prepare with **BiBlo** to eliminate bioenergetic blockades
- **DTX** activates excretion and detoxication
- **4W (4 Walls)** boosts the unspecific immune system
- **ImVir** strengthens the immune system against viruses
- **Multi** multi-resistant germs
- **Diamond Shield Programm** Basic balancing of energy levels
- **Crystal** for a deep regulation of the entire meridian system

Intensification:

- **EBV** Epstein Barr Virus
- **Healing Frequency** search term herpes, Epstein barr
- **Frequency Compendium II** searchindex herpes, Epstein barr

About the mode of action

The HSX-Chip which is called after its primary application Herpes Simplex also contains frequencies that treat Herpes Zoster, Herpes type 6, Herpes progenitalis, EBV and Cytomegalic Inclusion disease. It provides all-round protection against all the viruses which originating from the same family of viruses commonly appear jointly in corresponding infections.

Application

HSX 1-10

Time (Minutes)

each 05:30

Notice:

In patients with a Herpes Zoster infection, the symptoms may intensify at the beginning of therapy. In such a case, interrupt the use of the HSX frequency and resume the application with the Herpes sequence alone after the symptoms have subsided.

Additional applications

- Cytomegaly, Epstein Barr Virus and Herpes Virus VI can cause a variety of symptoms including chronic fatigue, fatigue, exhaustion and lymphatic swelling. In these cases it can make sense to test individually to what extent the HSX-Card can help.
- A Herpes Zoster infection is often the trigger for trigeminal neuralgia.
- Herpes viruses can often be identified as one of the causes of the symptom "skin burning".

Therapy-supporting recommendations

- In the Baklayan clinic, Takuna has proven to be very effective as an additional agent for the treatment of viral stress.
- At the same time we recommend a basic therapy with the Diamond Shield program, the dissolution of bio-energetic blockades with the BiBlo-Card, as well as a detoxication supported by the DTX chip to strengthen the body-own regulation to you.
- Note: since Herpes viruses occur intracellularly, the intracellular space must be opened with the FvE Chip before testing.
- We recommend Samento, Takuna, Houttuynia, Mannayan Boswellia and Mannayan Glucan as therapy-supporting means with specific effect against viruses.
 - o Mannayan Glucan+, 1x daily 1 capsule
 - o Takuna, 2x daily 8 drops
 - o Samento, 2x daily 8 drops
 - o Houttuynia , 2x daily 15 drops
 - o Mannayan Boswellia 1x daily 1 capsule
 - o Zinc Mannayan Zink+, 2x daily 1 tablet, in acute cases 1x5 caps.
 - o Mannayan Vitamin D3+K2 Ultra+ 1x daily 1 capsule with 4000 IU
- For glutathione supply: Mannayan Lipo-Glutathion+ 1x daily 1 capsule
- Colloidal silver water locally and internally 2x daily 1 tablespoon (no metal spoon)

IM (Immune modulation)

Stimulating the immune system

At a glance

More energy for the immune system

Bioenergetic testing by therapist

Lymph meridian

For self-help:

Supporting ChipCards:

- Prepare with **BiBlo** to eliminate bioenergetic blockades
- **DTX** activates excretion and detoxication
- **4W (4 Walls)** boosts the unspecific immune system
- **ImPar** strengthens the immune system against parasites
- **ImVir** strengthens the immune system against viruses
- **Multi** multi-resistant germs
- **Diamond Shield Program** Basic balancing of energy levels
- **Crystal** for a deep regulation of the entire meridian system

Additionally for cancer:

- **BR** supports bioregeneration

Intensification:

- **Healing Frequency** search term immune
- **Frequency Compendium II** searchindex immune

About the mode of action

The IM-card ensures a non-specific stimulation of the entire immune system.

Application

IM 1-10

Time (Minutes)

each 03:30

Results of the therapy

The IM-ChipCard has proven to be very popular and can be used at any indication for temporary or chronic immune deficiencies which express themselves through, for example, persistent colds and influenza.

In patients who currently have a cold the IM-ChipCard should always be used prior to the treatment with other ChipCards.

A healthy intestinal flora is a prerequisite for a balanced and efficient immune system. An intestinal cure as well as a detoxication to relieve the strain are

therefore highly recommended in cases of chronic immunodeficiency. See ChipCard DTX.

Therapy-supporting recommendations:

- For additional stimulation of the immune system we recommend the following preparations
 - o Mannayan Lipo-Glutathion+, 1-2 caps daily or
 - o Samento, 2x daily 8 drops
 - o Takuna, 2x daily 8 drops
 - o Houttuynia , 2x daily 15 drops
 - o Mannayan Power B+, 1x daily 1 Tabl.
 - o Mannayan Brom+, 1x daily 1 Tabl.
- A vitamin D3 deficiency should definitely be compensated to strengthen the immune system:
 - o Mannayan Vitamin D3, 1x daily 1 capsule or
 - o Vitamin D3 intensiv+, 1x daily 1 tablet or
 - o Vitamin D3 & K2 Ultra+, 1x daily 1 capsule

ImPar (Immune system parasites)

Strengthening against parasites

At a glance

Generally activate the immune system against parasites

Bioenergetic testing by therapist

Symptomatically according to the diagnosis

For self-help:

Supporting ChipCards:

- Prepare with **BiBlo** to eliminate bioenergetic blockades
- **Diamond Shield Program** Basic balancing of energy levels
- **Crystal** for a deep regulation of the entire meridian system

Intensification:

- **EG (4 large flukes)**
- **BaW** Tapeworms
- **All (Allergy)** contains Ascaris- and leeches-frequencies
- **L Liver**
- **Healing Frequency** search term immune, parasite
- **Frequency Compendium II** searchindex immune, parasite

Recommended literature:

A.E. Baklayan: *Parasites – the hidden cause of many diseases*

The particularly effective mode of action of this ChipCard is to strengthen the immune system against parasites in general. It contains the classic Rife frequencies which do not focus on specific parasites and in this way they assist the entire organism effectively in combating parasites of any kind.

Application

ImPar 1-12

Time (Minutes)

26:00

Results of the therapy

The high effectiveness of the ImPar-ChipCard was confirmed by practical results. During the course of the therapy a rapid improvement of the test values against parasites occurs visibly.

Therapy-supporting recommendations:

- Parasites certainly should not be underestimated in the development of many diseases. Jointly with other factors they depict the main cause for

chronic symptoms, such as, increased venosity, allergies, menstrual pain, migraines, rheumatism and intestinal disorders.

- Alongside therapy we recommend you a diet that, if possible, avoids animal protein because it serves as the main aliment for parasites.
- Effective herbal remedies, such as energized Noni juice, Juglandis, Rascal, black walnut or Papain capsules, which are also used effectively against parasites can successfully support the therapy. You will find further indications in the recommended literature A.E. Baklayan: *Parasites – the hidden cause of many diseases*.
 - o Papain cure (explained at the Asthma Chip)
 - o Rascal, 3x daily 2 caps.
 - o Derma-Clean Juglandis extra, 3x daily 1 tbsp
 - o Mannayan Black walnut tincture, 1x daily 2 tablespoons in plenty of water
 - o Mannayan Clean+, in the evening 1 to 3 caps.

ImVir (Immune system viruses)

Stimulation against viruses

At a glance

Activating the immune system specifically against viruses

Bioenergetic testing by therapist

Viruses can be tested well on the nervous system, the hormone system and the lymphatic system as well as on liver and lung: nerve system, TW, lymph, liver and lung meridian. Open the intracellular space with the **FvE**-ChipCard for 7 minutes prior to this.

For self-help:

Supporting ChipCards:

- Prepare with **BiBlo** to eliminate bioenergetic blockades
- **DTX** activates excretion and detoxication
- **4W (4 Walls)** boosts the unspecific immune system
- **Multi** multi-resistant germs
- **Diamond Shield Program** Basic balancing of energy levels
- **GR** Influenza program
- **Crystal** for a deep regulation of the entire meridian system

Intensification:

Depending on virus:

- **HepC** Hepatitis C
- **HSX** Herpes simplex
- **EBV** Epstein Barr Virus

- **Healing Frequency** search term virus
- **Frequency Compendium II** searchindex virus

About the mode of action

The frequencies which are saved on the ImVir-ChipCard can stimulate the immune system especially in cases of viral load, such as Influenza viruses or flu. In practice they have proven to be very successful and they can be used along with the treatment.

Application

ImVir 1-9

Time (Minutes)

34:00

Additional applications:

- In cases of viral effects as well as chronic diseases caused by Herpes viruses and the Epstein Barr Virus the regular use of this ChipCard is particularly important.

- The ImVir-Card may provide support in the immune deficiency Aids.
- Further, we necessarily recommend using this Anti-Virus-Chip in the assistance of treatment of childhood diseases, such as mumps, measles and rubella.

Therapy-supporting recommendations:

- We recommend Samento, Takuna, Houltuynia, Mannayan Boswellia and Mannayan Glucan as therapy-supporting means with specific effect against viruses:
 - o Mannayan Glucan+, 1x daily 1 capsule
 - o Takuna, 2x daily 8 drops
 - o Samento, 2x daily 8 drops
 - o Houltuynia , 2x daily 15 drops
 - o Mannayan Boswellia, 1x daily 1 capsule
 - o Zinc Mannayan Zink+, 2x daily 1 tablet, in acute cases 1x5 caps.
 - o Mannayan Vitamin D3+K2 Ultra+ 1x daily 1 capsule with 4000 IU
- For glutathione supply:
 - o Mannayan Lipo-Glutathion+ 1x daily 1 capsule

KON (Concentration)

Permanent power of concentration in everyday life

At a glance

Greater concentration, more energized in your everyday life

Bioenergetic testing by therapist

Nervous system meridian

For self-help:

Supporting ChipCards:

- Prepare with **BiBlo** to eliminate bioenergetic blockades
- **DTX** activates excretion and detoxication
- **Diamond Shield Program** Basic balancing of energy levels
- **L** activates the liver and reduces the cholesterol level
- **ImVir** if the Epstein-Barr Virus is involved
- **EBV** if the Epstein-Barr Virus is involved

Intensification:

- **Healing Frequency** search term concentration
- **Frequency Compendium II** searchindex concentration

About the mode of action

On the KON-Chip frequencies are saved which, e.g. support brain frequencies in a laterality disturbance. By stimulating the blood circulation of the brain the power of concentration will be improved.

Application	Time (Minutes)
KON 1	04:00
KON 2	03:00
KON 3	01:30
KON 4	02:30
KON 5	03:00
KON 6	02:00

Results of the therapy

User of this program experienced its immediate effect by having improved the ability to sustain clear thinking, even in long periods of mental activity.

Therapy-supporting recommendations:

- Complement the therapy with a liver detoxication.
- In case of chronic fatigue test your patient for Epstein Barr Virus and apply the EBV or HSX-Chip.

- Mannayan Lecithin+, 1 tsp daily.
- Mannayan Lino+, 1x daily 1-2 caps.
- Mannayan Mag+, 1-2x daily 1 tabl.
- or Mannayan Mag-Citrat+, 1-2x daily 1 caps.
- Mannayan Reg+, 1-2 times daily 1 caps.

L (Liver)

Keeping the liver healthy

At a glance

Regulating the lipometabolism, parasites, reducing the cholesterol level

Bioenergetic testing by therapist

Liver meridian, small intestine meridian, test the OD-Meridian as point for the metabolism

For self-help:

Supporting ChipCards

- **FvE** opening the intracellular space
- Prepare with **BiBlo** to eliminate bioenergetic blockades
- **DTX** is very important to clear the excretion pathways and to dispose the slags in the liver through the intestines, the skin, the lymph and the kidneys
- **Diamond Shield Program** Basic balancing of energy levels
- **Crystal** for a deep regulation of the entire meridian system
- **GewAbn** stimulates the metabolism
- **WOOD Sedation**

Intensification:

- **Healing Frequency** search term acne
- **Frequency Compendium II** searchindex acne

Recommended literature:

A.E. Baklayan: *Cholesterol – Shock and the Alternative* and *Parasites – the hidden cause of many diseases*

In order to find out if the patient is still suffering from parasite load the liver should be undergoing an examination after the testing. Due to the fact that parasites depend on cholesterol for their growth they prefer to settle on the liver. *Giardia lamblia* and roundworms have the most to gain from the products of the lipometabolism. For this reason we engineered the frequencies on this chip to effectively eliminate these parasites. Additional frequencies are stored on the L-Chip to support the liver detoxication.

Application	Time (Minutes)
Ascaris larvae1	03:00
Ascaris	03:00
Liver detoxication	03:00
Ascaris eggs	03:30
<i>Giardia lamblia</i>	02:30
Cholesterol reduction 1	02:00

Cholesterol reduction 2	02:00
Intestinal detoxication	02:00
Ascaris larvae 2	02:00
Total	23:00

It is very easy to lower the cholesterol levels. A simple method to cleanse the liver will cost you about 4 Euro and should be performed twice a year. To do so, you will need extra-virgin olive oil, a grapefruit and four capsules of L-Ornithine.

This method is highly suitable for a sustainable liver cleanse and for the support of the use of the L-Card. Repeat this method regularly until the liver is parasite free. You can find detailed instructions on the liver cleanse in the book "Parasites – the Hidden Cause of Many Diseases".

About 95 per cent of patients return to normal cholesterol levels after this combined method. The intake of statins, which millions of German citizens need up to now, therefore becomes superfluous.

For broadening we recommend the book "Cholesterol – Shock and the Alternative" which A. E. Baklayan wrote in 2001 in direct connection with the Lipobay-Scandal and the engineering of the L-Chip.

Additional applications

A liver load often is partly responsible for various disease patterns due to increased venosity such as varicose veins, hemorrhoids, shortness of breath and lack of oxygen, as well as for all signs of aging without exception such as, for example, rigidity, decreased standard performance, visual impairment or inactivity of inner organs. For this reason a liver detoxication often is recommended.

Therapy-supporting recommendations:

- The healthy liver as the central organ for the metabolism plays a vital role for your wellbeing. A therapy for a thorough liver detoxication may take, if necessary, a period of one year.
- For additional support for the liver we recommend the products
 - o Mannayan Curcu forte+, 1x daily 1 capsule
 - o Bitterstern, 2x daily 8 drops
 - o Derma-Clean L (Liver), 2 - 3x daily 1-2 teaspoons
 - o Mannayan Detox+, 1x daily 1 tablet
 - o Vermella Slim, 1-3x daily before meals 10-20 drops

Lu (Lungs)

At a glance

Breathe freely again

Bioenergetic testing by therapist

Lung meridian

For self-help:

Supporting ChipCards:

- **Diamond Shield Program** Basic balancing of energy levels

Combination with:

- **A** (Asthma) in Asthma
- **AR** Anti smoking
- **ASP** Aspergillen in allergies, shortage of breath
- **DTX** activates excretion and detoxication
- **FvE** reduce mental stress
- **HNO** shortens bacterial infections
- **LY** Lymphatic drainage
- **Crystal** for a deep regulation of the entire meridian system

Intensification:

- **Healing Frequency** search term lung
- **Frequency Compendium II** searchindex lung

This ChipCard supports all main functions of the lungs and helps with the therapy of pulmonary diseases. It can be used as prophylaxis and supports the after-treatment of any kind of lung problems (Bronchitis, bronchial asthma, pneumonia). Additionally the oxygen absorption can be improved. Depressive moods can be influenced favorably.

Application

Lu 1-8

Time (Minutes)

24:00

LY (Lymphatic drainage)

Gentle and effective treatment of stasis and stagnation

At a glance

Lymphatic drainage by amplitude modulation

Bioenergetic testing by therapist

Lymph meridian, symptomatically according to the diagnosis

For self-help:

Supporting ChipCards:

- Prepare with **BiBlo** to eliminate bioenergetic blockades
- **DTX** activates excretion and detoxication
- **Diamond Shield Program** Basic balancing of energy levels
- **Crystal** for a deep regulation of the entire meridian system
- **GewAbn** supports liver, bile and metabolism
- **Ni** Kidneys

Intensification:

- **Healing Frequency** search term lymph
- **Frequency Compendium II** searchindex lymph

Recommended literature:

Stephan Wiede: *Sanfte Lymphdrainage mit dem Diamond Shield (german booklet concerning lymphatic drainage with Diamond Shield Zapper)*

About the mode of action

Through an electric lymphatic drainage the LY-program supports the natural lymph flow. As with manual massage it creates increased blood circulation in the top and lower layer of the skin. In this way accumulated tissue fluid is discharged into the lymphatic system and then is removed. Edemas and stases will thus be reduced.

This program is also employed in pain therapy. De-blocking the tissues that are overloaded with cell fluid will ease the pain.

Application

LY

Time (Minutes)

20:00

Adjusting the intensity

Increase the voltage until you feel an undulating but pleasant tingling sensation. Please note: the tingling should not be too strong.

Therapy results

A relief will set in rapidly for the patient. They will realize a better blood circulation and significant pain reduction.

Therapy-supporting recommendations

- It is suggested and highly effective to compliment the LY-Card therapy with a daily taking of 2 x 8 drops of Burbur. Alternatively a teaspoon of Derma-Clean Ly (Lymph) (lymphatic tincture), mixed with a little bit of water, may support the success of the therapy.

Ma (Stomach)

At a glance

This ChipCard supports all essential functions of the stomach.

Bioenergetic testing by therapist

Stomach meridian

For self-help:

Supporting ChipCards:

- **FvE** opening of the intracellular space
- **DTX** activates excretion and detoxication
- Prepare with **BiBlo** to eliminate bioenergetic blockades
- **LY** Lymphatic drainage
- **Relaxation Program**
- **Diamond Shield Program** Basic balancing of energy levels
- **Crystal** for a deep regulation of the entire meridian system

Use ChipCard 2 to 3 times weekly

Stay earthed daily for 50 min with Diamond Shield

This ChipCard should be used in combination with

- **Element ChipCard EARTH Attenuation**
in case of acidosis, commonly feelings of hunger, abdominal fullness and tension the stomach area, pain in the stomach
- **Element ChipCard EARTH Support**
in case of loss of appetite, emaciation, signs of heavy fatigue of the body

Intensification:

- **Healing Frequency** search term stomach, gastrointestinal
- **Frequency Compendium II** searchindex stomach, gastrointestinal

According to old humoral pathology the stomach is the main location of the body tonus. If it is overburdened, overacidified or flaccid, this definitely can influence all functions which the stomach isn't normally associated with, such as depressive moods, high blood pressure and fatigue.

Typical symptoms are: Abdominal bloating, eructation and appetite disturbances

Application

Ma 1-7

Time (Minutes)

21:00

Remember that in the stomach functions a lot of rhythm is involved.

Therefore, important supporting measures are:

- Eating regularly
- Eating small portions
- Don't eat too late in the evening
- Healthy sleep
- The grounding with the Diamond Shield will be very useful in this as well.

The connection of emotions and stress is highly obvious and well known so that we should not need to point it out. Therefore the combination with the FvE Chip is favorable and should be used locally daily (7 minutes daily).

By the way, digestive disorders are not easy to treat because the stomach as central organ is extremely susceptible to equally mental stress, wrong habits and poor nutrition, to name only three. Talk to your therapist about a reasonable treatment program.

In case of acidosis please remember to abstain from classic foods that promote acidity for a while: alcohol, sugar and white flour.

Take 1 capsule of Mannayan Mineral Salt daily in the evening for deacidification and in between if necessary for heartburn.

Therapy-supporting recommendations:

- Mannayan Zym+, 1x daily 1 capsule
- Mannayan Betaine HCL & Pepsin+, 1x daily 1 capsule with too little gastric acid
- Mannayan Bonatum 1x daily 1 capsule in case of acid stomach
- Mannayan Coriander seasoning, 2x daily 20 drops in a glass of water

MIG (Migraine)

A remedy against migraine

At a glance

Successfully eliminating migraine-specific parasites

Bioenergetic testing by therapist

Parasites should be tested on the nervous system and on the hormonal system. There they can be found easily (TW and nervous system meridian)

For self-help:

Supporting ChipCards

- Prepare with **BiBlo** to eliminate bioenergetic blockades
- **DTX** activates excretion and detoxication
- **ImPar** strengthens the immune system against parasites
- **Diamond Shield Program** Basic balancing of energy levels
- **Crystal** for a deep regulation of the entire meridian system
- **Relaxation Program**
- **Feel Good Program**
- **Ba-M Back pain Program**
- **LY** Lymphatic drainage
- **WOOD Sedation**

Stay earthed daily for 50 minutes

Intensification:

- **Healing Frequency** search term migraine
- **Frequency Compendium II** searchindex migraine

Recommended literature:

A.E. Baklayan: *Parasites – The Hidden Cause of Many Diseases*

Dr. Hulda Clark already attributed migraine to Strongyloides which belong to the superfamily of the threadworms (filariae). As second cause for migraine by means of numerous tests, the so called heartworm (*Dirofilaria immitis*) has been identified. The MIG-Chip contains frequencies against both parasites. Biophysical blockades, amalgam fillings and liver damage can cause migraine as well. Accordingly, a migraine therapy should be complemented by a BiBlo-Chip treatment, a detoxication of the liver and of heavy metals.

Application

MIG 1-6

Time (Minutes)

je 04:00

Due to the fact that the parasites will be provoked by the frequencies of the MIG-Card the body might react with a mild form of migraine. In this case the

treatment needs to be interrupted for the duration of the migraine, whereas afterwards, during the migraine-free state the intensity of the chip treatment should be increased. Such sensitive reactions can be avoided with the help of the supporting BiBlo treatment and a detoxication of heavy metals. A supporting factor in this would be a strengthening of the immune system against parasites with the help of the ImPar-Chip.

Additional applications

In patients with heart diseases and arrhythmia resulting from this, often a load caused by the heartworm can be proved. For precisely this reason, it would be of benefit in a therapy with this disease to use the MIG-Chip tentatively.

Therapy results

With the help of the MIG-Card this therapy method could already convince a lot of people by its numerous successes. For example, the heartworm could be found continually in patients with migraines. Based on the therapy described above the patients concerned could be freed almost immediately from their discomfort. Over the course of a year about a dozen of such successes could be documented.

Therapy-supporting recommendations

- Due to amalgam fillings it is possible that in patients with migraine a therapy blockade occurs. Therefore, we recommend that migraine patients should be tested for amalgam load and in the event of a positive test result a heavy metal detoxication should be carried out at the same time. (Please refer to " A. E. Baklayan - "Parasites – the Hidden Cause of Many Diseases")
- 5-HTP has a proven effect on headache and migraine:
 - o Mannayan Griffonia 1x daily 1 capsule in the evening

Mil (Mites)

Bioenergetic testing by therapist

Allergy, lung, skin and connective tissue meridian

For self-help:

Supporting ChipCards:

- Prepare with **BiBlo** to eliminate bioenergetic blockades
- **A Asthma-Chip** with lung symptoms
- **Diamond Shield Program** Basic balancing of energy levels

Intensification:

- **Healing Frequency** search term mite
- **Frequency Compendium II** searchindex mite

Application

Mil 1-6

Time (Minutes)

30 min

The chipcard contains frequencies of the most important mites:

- Demodex folliculorum
- Dermatophagoides (dust mite)
- Acarus siro (flour mite)
- Ornithonyssus (bird mite)
- Sarcoptes scabiei (scabies)
- Mites general

MSt (Menstrual Disorder)

Help in case of absent menstruation

Bioenergetic testing by therapist:

Threefold warmer meridian

Self-help with:

Supporting ChipCards

- Prepare with **FvE**
- **DTX** activates excretion and detoxication
- **Diamond Shield Program** Basic balancing of energy levels

In combination with:

FIRE Support for stimulating the hormonal balance

Intensification:

- **Healing Frequency** search term „staphyl“
- **Frequency Compendium II** search index staphylococcus

Application

MSt 1-10

Time (Minutes)

34 min

Absent or reduced menstruation can have many causes. Menstruation is an important detoxication pathway for women and the so-called amenorrhoea is often accompanied by hormonal dysregulation and exhaustion.

In Chinese medicine, the function of the liver is always regulated as a treatment approach.

Therapy-supporting recommendations

- Derma-Clean L (Liver), 2 - 3x a day 1-2 tsp.
- Mannayan Lino+, 1x a day 1-2 capsule
- Mannayan Mag-Citrat+
- Adrenal Support in case of adrenal weakness 1x a day 20 drops

Multi

Multi-resistant germs

Bioenergetic testing by therapist:

Lymph meridian

Self-help with:**Supporting ChipCards**

- **IM** (immune modulation)
- **4W (4 Walls)** boosts the unspecific immune system
- **DTX** (detoxication, removal of bacterial toxins)
- **Diamond Shield Program** Basic balancing of energy levels

Intensification:

- **Healing Frequency** search term „staphyl“
- **Frequency Compendium II** search index staphylococcus

Application

Multi 1-18

Time (Minutes)

30 min

About the mode of action

The chipcard contains the frequencies of the most important staphylococci.

Staphylococci colonize skin and mucus membrane of humans and warm-blooded vertebrates as commensals and pathogens. They occur also in water, air, food.

They are facultatively anaerobic and are divided into nearly 50 different types. Here, a distinction is made between coagulase-positive types (give off coagulase during testing, generally one of the most important human pathogens) and coagulase-negative (mostly apathogenic) types.

Staphylococcus aureus is the most important type of coagulase-positive, pathogenic strains. As a so-called colonization germ, they occur on the skin, in the throat, and in the pharynx of 20-30 % of the people.

Symptoms only show in case of an immunodeficiency, due to infected incised wounds and blisters. It is one of the hospital germs, is very robust, and shows many antibiotic resistances (multi-resistant staphylococcus aureus strains, short MRSA) can be transmitted from animals and therefore belongs to the zoonoses.

Gentle therapy with biofrequencies

Their effect is hemolytic (dissolve red cells), causes boils, carbuncles, abscesses, mastitis (inflammation of the breast), dental infection, folliculitis, cardiac diseases, muscle diseases (pyomyositis), pneumonia, endocarditis, toxic shock syndrome (TSS), sepsis and they contaminate existing tumors .

Therapy-supporting recommendations:

- Colloidal silver water 2x a day 1 tbsp. (no metal spoon)
- Barberry, 2x a day 30 minutes before the meal 15-30 drops in half a glass of water
- Banderol, 2x a day 1-30 drops (gradually increase dosage) in 120 ml of water

Ni (Kidneys)

At a glance

Strengthen and protect the seat of our innate vitality

Bioenergetic testing by therapist

Kidney meridian

For self-help:

Supporting ChipCards:

- **LY** Lymphatic drainage
- **DTX** activates excretion and detoxication
- **Diamond Shield Program** Basic balancing of energy levels
- **Crystal** for a deep regulation of the entire meridian system

Combination with:

- **WATER Attenuation**
in case of stuttering urination, urinary gravel
- **WATER Support**
in case of impairment of sperm, erectile dysfunction, puffiness, frequent urination

Intensification:

- **Healing Frequency** search term kidney
- **Frequency Compendium II** searchindex kidney

Application

Ni 1-7

Time (Minutes)

21:00

This ChipCard supports all main functions of the kidneys, detoxication and drainage. With frequent urination.

Therapy-supporting recommendations:

- Derma-Clean N (Kidneys) 2x daily 3-10 ml in a glass of water

PaReg (Regulation of the pancreas)

Bioenergetic testing by therapist

Pancreas meridian

For self-help:

Supporting ChipCards:

- **LY** Lymphatic drainage
- **DTX** activates excretion and detoxication
- **Diamond Shield Program** Basic balancing of energy levels
- **Crystal** for a deep regulation of the entire meridian system

Combination with:

- **EARTH Support** in case of disturbed digestion
- **EARTH Attenuation** in case of thirst

Intensification:

- **EG (4 flukes)**
- **ImPar** strengthens the immune system against parasites
- **Db** Diabetes
- **GewAbn** weight loss
- **Healing Frequency** search term pancreas
- **Frequency Compendium II** searchindex pancreas

Recommended literature:

A.E. Baklayan: *Parasites – the hidden cause of many diseases*

Application

PaReg 1-7

Time (Minutes)

21:00

This ChipCard regulates all functions of the pancreas (Digestion, enzymes, blood sugar levels).

The *Eurytrema pancreaticum* (Pancreas fluke) can infest and damage the pancreas. It's recommended to apply the ImPar and the EG 4 flukes chipcard and a parasite cleanse.

Therapy-supporting recommendations:

- Always take care to treat the pancreatic leech together with the candida, otherwise one of the two strains can quickly be overlooked.
- Chromium supports the body's sugar metabolism:
 - o Mannayan Chrome+, 1-2x daily 1 capsule

- o Mannayan B Active+, 1x daily 1 tabl.
- o Mineralvit Gold drops, 1x daily 10 drops
- Biotin, MSM and the amino acids L-arginine and L-ornithine are involved in the regulation of blood sugar levels:
 - o Mannayan Biotin+, 1x daily 1 tabl.
 - o Mannayan MSM, 1x daily 1 capsule
 - o MSM Kombi, 1x daily 1 capsule
 - o Mannayan L-Arginine & L-Ornithine+, 1-2 times daily 1 capsule
- Mannayan Brom+, 1-3 tabl. daily

Piggy

Takes the fright out of the flu

At a glance

For swine influenza and other types of influenza viruses

Bioenergetic testing by therapist

Liver meridian, lymph meridian. Viruses can be tested well on the nervous system, the hormone system and the lymphatic system as well as on liver and lung: nerve system, TW, lymph, liver and lung meridian. Open the intracellular space with the FvE-ChipCard for 7 minutes prior to this.

For self-help:

Supporting ChipCards:

- **DTX** activates excretion and detoxication
- **4W (4 Walls)** boosts the unspecific immune system
- **ImVir** strengthens the immune system against viruses
- **Diamond Shield Program** Basic balancing of energy levels
- **GR Influenza Program**
- **Multi** multi-resistant germs
- **Crystal** for a deep regulation of the entire meridian system

Stay grounded 50 min daily

Intensification:

- **Healing Frequency** search term flu, influenza
- **Frequency Compendium II** searchindex flu, influenza

Application

Piggy 1-7

Time (Minutes)

23:00

This ChipCard contains selected frequencies for the Influenza-virus H1N1, also known as swine influenza.

It is generally known that influenza viruses can change constantly and in every flu wave other serotypes can be prevalent. Therefore an attempt of application of the Piggy-ChipCard can be made for every flu disease.

Therapy-supporting recommendations:

- Be sure to include the natural antivirals Samento, Takuna, Houttuynia, Mannayan Boswellia and Mannayan Glucan in your therapy:
 - Mannayan Glucan+, 1x daily 1 capsule
 - Takuna, 2x daily 8 drops

- Houttuynia , 2x daily 15 drops
 - Samento, 2x daily 8 drops
 - Mannayan Boswellia, 1x daily 1 capsule
 - Zinc Mannayan Zink+, 2x daily 1 tablet, in acute cases 1x5 caps.
 - Mannayan Vitamin D3+K2 Ultra+ 1x daily 1 capsule with 4000 IU
- For glutathione supply:
- Mannayan Lipo-Glutathion+ 1x daily 1 capsule

Pr (Prostate)

At a glance

Help for a loaded prostate

Bioenergetic testing by therapist

Lymph, kidney, bladder meridian

For self-help:

Supporting ChipCards:

- **DTX** activates excretion and detoxication
- **Diamond Shield Program** Basic balancing of energy levels
- **Crystal** for a deep regulation of the entire meridian system
- **ImPar** strengthens the immune system against parasites

Combination with:

- **WATER Support** in case of erectile dysfunction, loss of sperm
- **WATER Attenuation** in case of chronic Prostatitis

Intensification:

- **Healing Frequency** search term prostate
- **Frequency Compendium II** searchindex prostate

Application

Pr 1-7

Time (Minutes)

24:00

This ChipCard supports all main functions of the prostate.

Prostate problems are counted among the most frequent problems of men above a certain age.

In the course of the years hundreds of tests have shown that indeed all kinds of “unwanted creatures” and environmental loads can accumulate there, but in many cases 3 species recur obstinately. These are Trichomonads, Chlamydiae and Toxoplasma, whereas the Chlamydiae and the Toxoplasma are brought along by the Trichomonads. Trichomonads also influence potency problems of men and some have expressed a high level of satisfaction “in this field” after we had treated the trichomonads load.

In the event of frequent bladder and prostate irritation, erratic urination, a frequent need to get up during the night, Chlamydiae play a major role.

Application with the hand electrodes: placing one electrode on the stomach and one at the sacrum to suffuse this area has proven to be successful.

Therapy-supporting recommendations:

- Mannayan Cyst+, 1-2 times daily 1 capsule
- Mannayan D-Mannose, 1x daily ½ tsp in a glass of water or Urovit, 2x daily 2 capsules
- Mannayan Zink+, 1x daily 1 tabl.

Rh (Rheumatism)

Bioenergetic testing by therapist

Meridians connective tissue, organ degeneration, lymph

For self-help:

Supporting ChipCards:

- **Diamond Shield Program** Basic balancing of energy levels
- **Crystal** for a deep regulation of the entire meridian system

Stay earthed 50 min daily.

Intensification:

- **Healing Frequency** search term "rheuma"
- **Frequency Compendium II** searchindex rheumatism

Recommended literature

A. E. Baklayan - *Gentle Self-Healing with harmonic waves – A practical Manual* (chapter "Rheumatic conditions")

In rheumatic diseases two main factors are known to play an important role:

1. A certain combination of parasites, pathogenic agents, acidosis, hypersensitivity to protein and an excess of carbohydrates,
2. An excessive appearance of radicals which attack joints and muscles.

With the DS Zapper you can respond effectively to both topics.

Radicals will be discharged by staying earthed for 50 minutes after the end of the application. By the way, many users report of an immediate fundamental improvement of their complaints by staying earthed.

Application

Rh 1-18

Time (Minutes)

51:00

Therapy-supporting recommendations:

- High-quality antioxidants such as Mannayan Antioxi+, 2x daily 1 tbl.
- Diet with reduction of animal protein
- Reduction of carbohydrates
- Deacidification via
 - o Mannayan Mineral salt, 1 capsule in the evening

Sch - T (Pain-Program analog TENS)

At a glance

The program for transcutaneous electric nerve stimulation

Bioenergetic testing by therapist

Nerve system meridian or at the loaded location

For self-help:

Supporting ChipCards:

- **DTX** activates excretion and detoxication
- **Diamond Shield Program** Basic balancing of energy levels
- **Crystal** for a deep regulation of the entire meridian system

Stay grounded for at least 50 minutes a day.

Intensification:

- **Healing Frequency** Search term pain
- **Frequency Compendium II** Searchindex pain

Included are 3 different frequency programs. As different as each person is, so different is the response to the different frequencies. Basically, Sch-T 1 is intended for acute pain, Sch-T 2 a possible alternative, Sch-T 3 for chronic pain.

Application

Sch – T 1-3

Time (Minutes)

each 10 Min.

Use

- Sch-T 1 in acute pain,
- Sch-T 2 in acute chronic pain and
- Sch-T 3 in chronic pain.

SCH-T 1:

This program works with a frequency of 100 Hertz (the device emits 100 current pulses per second) and a pulse duration of 250 microseconds.

To quickly assess the success of the treatment, start treatment with this program. You should switch to the SCH-T 2 and/or SCH-T 3 programs if pain is not relieved after approx. 2 weeks of regular use. Try out which of these programs is most suitable for you personally.

SCH-T 2:

The frequency (20 Hz) and the pulse duration (500 ms) of the program "SCH-T 2" leads, according to Rife, to a general pain relief. This program is an alternative to the "SCH-T 1" program.

SCH-T 3:

The low-frequency stimulation with a frequency of 2 Hz and a pulse duration of 1 millisecond increases the release of the body's own pain-relieving substances (opioids), as is the case with high-frequency stimulation. Since the respective points of attack of these opioids differ in the body and thus pain relief is achieved in different ways, this program is suitable as a supplement and alternative to the "SCH-T 1" program.

Tips on skin care for sensitive skin

- Never apply electrodes to irritated or injured skin.
- Many skin problems arise because adhesive electrodes are pulled too tightly over the skin when applied. To prevent this, place the electrodes from the centre outwards and do not pull them tightly over the skin from a glued corner.
- When removing the electrodes, always pull them off in the direction of hair growth.
- It can be helpful to apply cream to the areas of the skin where the electrodes were glued on between the applications

Local placement

This is the most commonly used placement technique. The electrodes are placed on both sides close to the painful area so that the current flows through the pain area.

This is achieved by placing one electrode on each side of the pain area. This is particularly suitable if the pain is located at an extremity and deep in the tissue.

By placing electrodes on opposite sides of the limb, the current flows directly through the pain area, e.g. knee pain - electrodes applied inside and outside.

Therapy-supporting recommendations

- Apply Condura Comfort drops locally and take 10 - 20 drops, keeping them under your tongue for 2 minutes.

Schu (Schumann frequency)

Application

Schu

Time (Minutes)

07:00

The Schumann frequency is the natural frequency of the earth. Today, this frequency is called the "biological normal" because humans need these signals.

The scientist M. A. Persinger was involved when the occurred physiological problems of NASA astronauts could be solved by using Schumann wave generators in manned space flight.

Rüdiger Wever conducted a study at the Max Planck Institute in Erling - Andechs on how people react in a magnetically shielded room. During the one-month stay of the test persons, there was a disturbance of the circadian rhythm (the so-called "inner clock"), i.e. a destabilization of the wake-sleep rhythm, the daily course of the body temperature, change of the cortisone level, etc.

O'Keefe and L. Nadel published evidence that the Schumann frequency occurs in the hippocampus and is in the theta range of human brain waves. The hippocampus is important for attention and concentration.

Source: Planetary Systems of the Earth 1 - Classical Systems: Klaus Piontzik, Books on Demand

According to the calculations of naturopath Baklayan, the range of 7.83/7.84 Hz within the vital sublevel of the body corresponds to the gallbladder point 26. Its name is "point of the girdle path". The girdle pathway is one of the 8 special vessels that connects the energy center on the spine, called "Gate of Life" with the central energy center below the navel, called Tan'tien or Hara. So this is about centering and earthing the person. It is used in acupuncture to guide, support and harmonize the Chi in the lower area. As you can easily see, an incredible correspondence.

Regular use of the chipcard can be helpful when earthing yourself and finding your center.

Tin (Tinnitus)

At a glance

No more noises in the ear

Bioenergetic testing by therapist

Nerve system and lymph meridians

For self-help:

Supporting ChipCards:

- Prepare with **BiBlo** to eliminate bioenergetic blockades
- **DTX** activates excretion and detoxication
- **HNO** with bacterial loads
- **Diamond Shield Program** Basic balancing of energy levels
- **Crystal** for a deep regulation of the entire meridian system
- **SEH TCM-ChipCard** for head complaints

Combination with:

- **WOOD Support**

Intensification:

- **Z Teeth**
- **Healing Frequency** search term tinnitus
- **Frequency Compendium II** searchindex tinnitus

The causes of tinnitus can be various. It is advisable to look for heavy metals, medication side effects, nutrient deficiencies, consequences of Morbus Menière, otitis, teeth or mastoid foci, as well as an infection with *Trichinella spiralis*.

Application

Tin

Time (Minutes)

27:37 Min

The ChipCard contains 34 acupuncture point frequencies that are relevant in Chinese medicine for tinnitus.

Wz (Warts)

Bioenergetic testing by therapist

Skin-, connective tissue and lymph-meridian. Viruses can be tested well on the nerve, hormone and lymph system as well as liver and lung.

Nerve system, threefold warmer, lymph, liver, lung meridian. Open intracellular space with FvE-Chipcard for 7 minutes in advance.

For self-help:

Supporting ChipCards:

- Prepare with **BiBlo** to eliminate bioenergetic blockades
- **4W (4 Walls)** boosts the unspecific immune system
- **ImVir** strengthens the immune system against viruses
- **Diamond Shield Program** Basic balancing of energy levels

Intensification:

- **Healing Frequency** search term warts
- **Frequency Compendium II** searchindex warts

Application

Wz 1-10

Time (Minutes)

67:00 Min

The chipcard contains Rife- and Clark frequencies for different warts types (L-arm, BS, JB, CC, HA, FR)

We recommend to prepare therapy with the FvE-ChipCard for 7 min. to open the intracellular space. It has proven to support in relapses and distinct progress (e. g. with immunodeficiency, smoking and children due to their little developed immune system)

Therapy-supporting recommendations:

As remedy that supports the therapy with specific action against viruses we recommend the intake of Samento, Takuna, Houttuynia, Mannayan Boswellia (Weihrauch) and Mannayan Glucan.

- Mannayan Glucan, 1x 1 caps.
 - Takuna, 2x daily 8 drops
 - Samento, 2x daily 8 drops
 - Houttuynia , 2x daily 15 drops
 - Mannayan Boswellia 1x daily 1 tabl.
 - Zinc Mannayan Zink+, 2x daily 1 tablet, in acute cases 1x5 caps.
 - Mannayan Vitamin D3+K2 Ultra+ 1x daily 1 capsule with 4000 IU
- For glutathione supply:
- Mannayan Lipo-Glutathion+ 1x daily 1 capsule

Z (Teeth)

At a glance

Attack the usual suspects on teeth and herds of teeth.

Bioenergetic testing by therapist

Lymph meridian, tooth-organ relation

For self-help:

Supporting ChipCards:

- Prepare with **BiBlo** to eliminate bioenergetic blockades
- **DTX** activates excretion and detoxication
- **HNO** for bacterial foci in the throat
- **IM** Immune Modulation
- **Multi** multi-resistant germs

Intensification:

- **CLST** (Clostridia)
- **Healing Frequency** search term tooth, teeth
- **Frequency Compendium II** searchindex tooth, teeth

The problems of the teeth and the dental focus have long been known. According to our tests it has always been the same bacterial genera that gather here. This ChipCard contains the frequency range of the 9 most common bacterial genera.

Recommendation: Let it run once a day.

Application

Z 1-9

Time (Minutes)

41:30

Caution!

When bacteria die rapidly it might happen that a tooth aches or inflames.

Attention! Control by a dentist is essential.

Therapy-supporting recommendations

- Mouth rinsing with Colloidal silver water
- Carefully dab the gums with a very small amount of oregano oil - dilute as needed
- Then pull oil:
 1. After brushing the teeth, the patient should apply a single drop of essential oregano oil very carefully with the front bristles of the

toothbrush and brush the teeth again. Oregano oil acts like a creeping oil that penetrates behind the gums and kills most bacteria.

2. Rinse half a tablespoon of linseed oil back and forth through your teeth in your mouth for ten minutes, then spit it out again to remove all the toxins. However, it must be mentioned here that a focus refurbishment is unavoidable.

ChipCards according to the five elements

A further milestone in therapy has been achieved by using the Harmonical Frequencies to specifically control the meridian combinations that make up one of the elements of Chinese medicine. This is a very strong and deep therapy.

Let yourself be guided by the main symptom, which usually fits, and if the secondary symptoms also fit in part, you really need this ChipCard.

The only thing we strongly advise against is the simultaneous damping and support of the same element. That would be contradictory. (You can't cool and heat at the same time.)

Afterwards you will find a helpful indication list with which you can determine the suitable 5 element ChipCard.

Recommended literature

A. E. Baklayan - *Gentle Self-Healing with harmonic waves – A practical Manual* (chapter “ChipCards according to the Five Elements”)

WOOD Attenuation	Headaches
-------------------------	------------------

This ChipCard belongs to the regulatory circuit of the element WOOD. The element WOOD regulates liver and gallbladder.

It also regulates the stasis in the liver which is overstrained by its many functions, especially by detoxication and the flow of bile. The gall bladder is known to react very sensitively to any kind of stress.

And from this all symptoms follow:

If the element wood is blocked or overexcited mainly headaches arise. Often they are accompanied by great irritability and cramps.

Also remember with the following complaints:

This ChipCard can also be tried in states of cramps and irritability.

WOOD Support	Tinnitus
---------------------	-----------------

This ChipCard belongs to the regulatory circuit of the element WOOD. The element WOOD regulates liver and gallbladder.

It thus also regulates the weakened liver which is overstrained by its many functions, especially by detoxication and production and draining of gall (digestion of fat). The gall bladder is known to react very sensitively to any kind of stress.

And from this all complaints follow:

Also remember with the following complaints:

Headaches with rotary vertigo

Disturbed digestion of fat

Pain in the lower abdomen

Pain in the skull cap

Secondarily:

Lancinating pain in the lower abdomen

Tensed, cramped and nervous

Pain in the skull cap

Vomiting of clear mucus

FIRE Attenuation

Nervous restlessness

The element fire in the Chinese medicine regulates the heart and small intestine meridians and their functions. If they are blocked or inflamed or overexcited then they must be sedated.

Also remember with the following complaints:

Feeling of constriction

Feeling of tension in the umbilical region

Thirst

Heat sensation in the chest

FIRE Support

Anxiety

The element fire in the Chinese medicine regulates the heart and small intestine meridians and their functions.

Also remember with the following complaints:

Palpitation and precordial anxiety

Insomnia

Stools containing undigested food

EARTH Attenuation

Abdominal pain

The element earth in the Chinese medicine regulates the stomach and spleen/pancreas meridians and their functions.

Also remember with the following complaints:

Eructation - acidic and putrid

Hunger

EARTH Support

Loss of Appetite

The element earth in the Chinese medicine regulates the stomach and spleen/pancreas meridians and their functions.

Also remember with the following complaints:

Disturbed digestion

Cold extremities

<i>METAL Attenuation</i>	Cold
---------------------------------	-------------

The element metal in the Chinese medicine regulates the lungs and the colon meridian and its functions.

Also remember with the following complaints:

Cough with sputum

Constipation

Swollen reddend throat

<i>METAL Support</i>	Asthma
-----------------------------	---------------

The element metal in the Chinese medicine regulates the lungs and the colon meridian and its functions.

Also remember with the following complaints:

Shortness of breath, asthmatic

Perspiration – spontaneous

Shivering

<i>WATER Attenuation</i>	Pain in the genital area
---------------------------------	---------------------------------

The element water in the Chinese medicine regulates the kidney and gall bladder meridians as well as their functions.

Also remember with the following complaints:

Stuttering urination

<i>WATER Support</i>	Erectile dysfunction
-----------------------------	-----------------------------

The element water in the Chinese medicine regulates the kidney and gall bladder meridians as well as their functions.

Also remember with the following complaints:

Frequent urination

Puffiness

Indications alphabetically

Abdomen - bloated	EARTH Support
Abdomen - pain	FIRE Support
Abdomen - tension and pain, radiating into loins, hips, scrotum, testicles	FIRE Attenuation
Abdominal pain - worsened by pressure	METAL Attenuation
Abdominal pain - rumbling and gurgling in the internal organs	METAL Support
Abdominal pain - expectoration of clear mucus - improvement through heat and pressure	EARTH Support
Abdominal pain - persistent, pulling, bleeding	EARTH Support
Abdominal pain - deteriorated by pressure	EARTH Attenuation
Appetite – decreased	EARTH Support
Appetite – loss of	EARTH Support
Asthmatic conditions	METAL Support
Bad breath	EARTH Attenuation
Breathing – accelerated	METAL Attenuation
Breathing – heavy	WATER Support
Breath – shortness of, especially when lying down	METAL Support
Breathing – heavy, with raised shoulders	METAL Support
Concentration power – reduced	FIRE Support
Constipation	METAL Attenuation
Constriction - feeling of	FIRE Attenuation
Cough with blood	WATER Support
Cough with thick bloody mucus	METAL Attenuation
Cough with fine lightly colored mucus	METAL Support
Cough - dry, non-productive	METAL Support
Cramps, twitching	WOOD Attenuation
Diarrhea	FIRE Support
Diarrhea	METAL Support
Diarrhea - malodorous	METAL Attenuation
Diarrhea with watery stools	EARTH Support
Diarrhea in the morning	WATER Support
Diarrhea, intense diarrhea after a prolonged dysentery, anal prolaps, secretion of mucus	METAL Support
Digestion of fat – difficult	WOOD Support
Digestion – impairment of	EARTH Support
Disorientation, distorted perception and emotions	FIRE Attenuation
Drowsiness, heavy head	EARTH Support
Emaciation	EARTH Support
Enuresis	WATER Support
Erectile dysfunction	WATER Support
Eructation - loud	EARTH Support
Eructation - acidic and putrid	EARTH Attenuation
Extremities - cold	EARTH Support
Extremities - cold	METAL Support
Eyelids - reddened, swollen, painful	WOOD Attenuation

Fatigue	EARTH Support
Face - reddened	WOOD Attenuation
Facial skin – waxy	METAL Support
Facial color – unhealthy and blackish	WATER Support
Feeling of fullness, feeling of tension in the stomach	WATER Support
Feeling of fullness, feeling of tension in the stomach region	EARTH Attenuation
Feet – cold	WATER Support
Gums – bleeding, swollen, painful	EARTH Attenuation
Head – heavy, and light feet	WOOD Attenuation
Headaches	WOOD Attenuation
Headaches with rotary vertigo	WOOD Support
Hiccup	WATER Support
Heat sensation in chest	FIRE Attenuation
Hunger with rumbling in the stomach	EARTH Attenuation
Impairment of Sperm	WATER Support
Improvement by application of heat and pressure	METAL Support
Inflammation of the ear and deafness	WATER Support
Insomnia	FIRE Support
Irritability, willingness to become angry	WOOD Attenuation
Ischuria	METAL Support
Ischuria	WATER Support
Jaundice	EARTH Support
Lower abdomen – swollen	WOOD Attenuation
Lower abdomen – lancinating pain	WOOD Support
Lumps in the stomach region	EARTH Support
Mouches volantes	WATER Support
Mouth – dry	METAL Support
Mouth – dry, bitter taste	WOOD Attenuation
Nose – dry	METAL Support
Numbness in the fingers or hands	WOOD Attenuation
Pain attack	EARTH Support
Pain in the limbs	FIRE Attenuation
Pain, penile	WATER Attenuation
Pain, penile	FIRE Attenuation
Pain in the skull cap	WOOD Support
Pain in the lower abdomen	WOOD Support
Pain in the flanks (Gallbladder)	WOOD Attenuation
Pain in the lumber region	WATER Support
Palpitation	FIRE Support
Palpitation	WOOD Attenuation
Penile atrophy	WATER Support
Perception – sedated	FIRE Attenuation
Perspiration – little or no	METAL Support
Perspiration – spontaneous	FIRE Support
Perspiration – spontaneous	METAL Support
Perspiration during sleep	WATER Support
Precordial anxiety	FIRE Support

Puffiness	WATER Support
Reduced ability to remember	FIRE Support
Respiratory function – decreased	EARTH Support
Restlessness, nervous	FIRE Attenuation
Restlessness after high fever	FIRE Attenuation
Scrotum – pain in the	WOOD Support
Sensation of cold in the loin region and legs	WATER Support
Shortness of breath	METAL Support
Sperm – cold and liquid	WATER Support
Sperm – loss of	WATER Support
Sleep – shallow with dreams, awoken during the night having a dry mouth	WATER Support
Sputum – bloody, Haemoptysis	METAL Support
Stool – purulent and bloody	METAL Attenuation
Stool – loose, diarrhea	EARTH Support
Stool with undigested residues	FIRE Support
Swelling or tension in the umbilical region, improvement by defecation	FIRE Attenuation
Temples – aching	WOOD Attenuation
Tense, cramped and nervous	WOOD Support
Tenseness	WOOD Attenuation
Thirst	FIRE Attenuation
Thirst with high drinking	EARTH Attenuation
Throat – sore	METAL Support
Throat – swollen and reddened	METAL Attenuation
Tinnitus	WOOD Support
Urge to be active – excessive	WATER Support
Urine – purulent and bloody	WATER Attenuation
Urine – little and red, frequent urge of urination	WATER Support
Urine – stuttering and little, yellow to reddish	WATER Attenuation
Urine – cloudy	WATER Attenuation
Urine – cold	WATER Support
Urine - little and clear	WATER Support
Urinary incontinence	WATER Support
Urine poor, ischuria	METAL Support
Urine poor, ischuria	WATER Support
Urinary calcification	EARTH Support
Urinary calcification	WATER Attenuation
Urinary gravel	WATER Attenuation
Vertigo – rotary	WOOD Attenuation
Vertigo – rotary	WATER Support
Vision - impaired, flickering view	WOOD Attenuation
Voice – weak	METAL Support
Vomiting of clear mucus	WOOD Support
Vomiting of putrid food	EARTH Attenuation
Weakness of the extremities	EARTH Support
Weakness in the loins and legs	WATER Support

A new type of extension tool is available for the Diamond Shield Zapper that complements the frequency application with Tesla technology and can significantly increase its effectiveness

NEW BREAKTHROUGH IN ELECTRICAL FREQUENCY PROCEDURE (ZAPPER)

INCREASE EFFECTIVENESS BY 300 %!

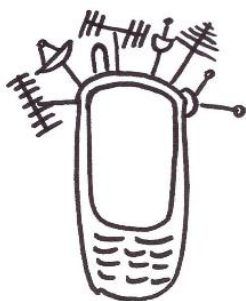
For two decades, naturopath Baklayan has been researching an improvement in electric frequency procedure (the zapper). His *Diamond Shield Zapper IE* with automated pulse discharge, modulation, and wobble technology has a tremendous technological edge to this day and has long since established itself as a standard device for connoisseurs.

TESLA TECHNOLOGY AND ENERGY TRANSFER

The idea of "free energy transfer" using Tesla technologies fascinated him ever since he first heard about it.

Earlier experiments showed hardly any results, because Tesla coils are always effective only for a very small frequency range. But inspired by the topic of "fractal antennas" he had the idea to combine them with the electric current of the zapper.

FRACTALS



Without fractal antennas our cell phones would look like the picture on the left, because for each frequency range (Internet, Bluetooth, telephony, etc.) you need a separate antenna.

But the fact that our cell phones look like the picture on the right is thanks to the built-in fractal antenna.



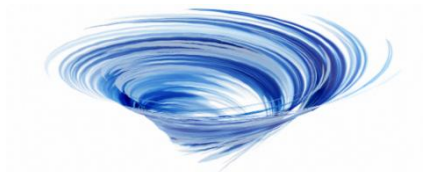
By using over 1200 fractals arranged as Tesla coils, naturopath Baklayan was able to develop an enhancer, that covers all frequency ranges well.

The results were more than impressive from the first attempt.



CLOCKWISE VORTEX

The enhancer also creates a dextrorotatory vortex or vortex, which causes the frequencies to penetrate 3 to 5 times deeper into the body and have their effect.



This solved a second problem of zapping at the same time: as is well known, current flows preferentially on the surface and takes the shortest path. Due to the fractal swirling, the energy penetrates into the depth.

The effect of the application triples. This is truly a new breakthrough in electric frequency procedure. This enhancement should not be missed when using the Diamond Shield Zapper from now on.

HARMONIZATION OF ACUPUNCTURE POINTS



The Harmonical Frequency Procedure was created by naturopath Baklayan calculating the exact frequency of each acupuncture point with mathematical precision. He even received a patent for this system. Thus, each acupuncture point of the body can be individually resonated with its own frequency.

The application unfolds and strengthens its beneficial effects.

ACUPUNCTURE POINTS ARE LOCAL ENERGY FIELDS WITH RIGHT AND LEFT ROTATION

Furthermore, A. Baklayan discovered through his research that acupuncture points are also energy fields that have both right- and left-turning parts. The right-turning ones strengthen the vital force, while the left-turning ones weaken the fields. Through the special vortex created, the right-turning fields are explicitly strengthened. The increase in energy and vitality is immediately noticeable to everyone.



SIMPLICITY OF APPLICATION



CONNECT ENHANCER IN BETWEEN – DONE – EVERYTHING ELSE HAPPENS
AUTOMATICALLY

Naturopath Baklayan has achieved optimum effectiveness with gold-plated hand electrodes. However, all Diamond Shield electrodes and wrist cuffs can be used.

SUMMARY OF THE NEW ELECTRIC FREQUENCY PROCEDURE (ZAPPER)

1. Acupuncture points are set into self-resonance. The application unfolds and strengthens their beneficial effects.
2. Fractals amplify all frequency ranges.
3. The generated vortex leads additional energy into the depth.
4. The dextrorotatory vital field of the acupuncture point is activated and strengthened.

Index

A

- abscesses 152
- Acarus siro 149
- acupuncture .11, 25, 28, 35, 37, 43, 49, 51, 57, 86, 104, 105, 106, 164, 178, 179
- Adrenal 150
- adrenal gland 39
- adrenal weakness 150
- alcohol detoxication 89
- allergies 27, 118, 135
- allergy meridian 79
- Amantilla 33
- amino acid deficiency 64
- anger, suppressed 33
- Antioxi+ 18, 129, 160
- anxiety23, 32, 33, 171, 174
- appendix 105
- Ascaris 79, 80, 84, 85, 99, 119, 140, 141
- Aspergillus 79, 80, 89, 98, 99, 108
- asthma 9, 69, 75, 79, 80, 81, 82, 83, 89, 118, 135, 142, 172, 186
- asthmatic conditions 75
- autoimmune 19, 26, 27, 97
- Avea 33

B

- B Active+ 155
- B Aktiv+ 29, 30, 109
- Babuna 17, 33
- Banderol 81, 129, 152
- Barberry 81, 129, 152
- belching 70
- Betaine HCL & Pepsin+ 103, 146
- bile function 66
- bioenergetic blockades. 32, 93, 94, 116
- Biotin+ 109, 155

- Bitterstern..... 29, 30, 58, 114, 121, 141
- Black cumin seed oil 89
- Black walnut tincture 118, 120, 135
- bladder, irritated 74
- blood lipid levels increased 36
- boils 152
- Bonatum 124, 146
- Borrelia 105
- Borreliosis 96
- Boswellia 18, 78, 86, 107, 116, 127, 131, 137, 156, 157, 165
- bowel function 65
- breath constriction 62
- Brom+ 133, 155
- bronchial congestion 69
- bronchial mucus 62
- bronchitis 75, 80
- Burbur 81, 114, 144
- Burbur-Pinella 81, 114

C

- Cal+ 86
- Cand+ 101
- Candida ...39, 53, 79, 80, 81, 82, 98, 99, 100, 101, 108, 109
- carbohydrate metabolism disorder .. 64
- carbuncles 152
- cardiac diseases 152
- cell membrane potential 26
- cell poisoning 51
- cellular respiration 51
- cellulite 63
- child pinworm 119
- Chladni figures 105
- Chlamydia 119
- Chlamydiae 158
- cholesterol 36, 140, 141
- Chrome+ 154
- Clean+ 34, 90, 113, 118, 123, 135

- Clostridia 99, 102
- Clostridium 98, 102
- Clove oil composite 101
- Coenzym Q10+ 53
- cold feet 66, 74
- coldness of the feet 29
- Colloidal Gold 33
- Colloidal silver water ..58, 78, 101, 103, 124, 131, 152, 166
- Colo+ 34, 113
- Colovital..... 123
- compaction..... 57, 58
- Condura 18, 162
- congestion 27, 114
- constipation..... 36, 41, 65
- constricted neck 23
- Coriander 146
- Corona 107
- coughing 62
- Cocksackie virus 108, 109
- Crystal.....11, 104, 105, 106
- Cumanda 101
- Curcu forte+ 141
- Cyst+ 120, 159
- Cytomegalie..... 116, 130

D

- Deca-Mineral+ 92
- Deca-Mineral+ 38, 40, 123
- Demodex folliculorum 149
- dental infection 152
- depressed mood..... 23, 32
- depressions 32
- depressive mood 30
- depressive moods..... 33, 36, 145
- *Depressive moods* 32, 142
- Derma-Clean L (Liver)29, 30, 33, 59, 114, 129, 141, 150
- Derma-Clean Ly (Lymph) 129, 144
- Derma-Clean N (Kidneys) .. 33, 59, 114, 120, 129, 153
- Dermatophagoides 149
- Detox+ 114, 141

- detoxication..13, 14, 15, 20, 29, 32, 42, 55, 68, 88, 105, 112, 113, 114, 116, 129, 131, 132, 138, 140, 141, 147, 148, 150, 153, 170, 187
- diarrhea 66
- Dirofilaria immitis 147
- D-Mannose 159
- drowsiness..... 28
- dust mites..... 79

E

- ear electrodes..... 24
- edema..... 58
- electrical charges 39
- electrosensitivity 39
- electrosmog..... 32, 39, 94
- endocarditis..... 152
- Endometriose 119, 124
- Enterobius vermicularis 119
- environmental toxins.... 15, 42, 45, 105
- Epstein Barr 31
- Epstein Barr virus..... 30
- Epstein Barr Virus ... 115, 130, 136, 138
- E-smog..... 93
- Eurytrema pancreaticum108, 109, 117, 154
- exhaustibility 29
- exhaustion28, 36, 38, 40, 41, 48, 56, 116, 121, 131, 150
- exhaustion, rapid..... 28
- eyelid oedema 36
- Eyes..... 42, 45

F

- faintness 28
- Fasciola hepatica 117, 119, 127
- Fasciolopsis buski 98, 99, 117, 127
- Fasciolopsis miracidia 98
- fat digestion..... 66
- fat metabolism 49
- fatigue 13, 14, 28, 29, 30, 31, 32, 33, 35, 36, 40, 41, 94, 116, 131, 138, 145
- Fatigue..... 28, 36, 174

- fatty acid synthesis 51
- fearfulness 23, 33
- febrile inflammation 75
- Flor..... 103
- flow of ions at the cell membranes .. 50
- Flukes..... 85
- folliculitis 152
- food intolerances..... 64, 72
- Fractal Enhancer 26
- freezing..... 28

G

- Gardnerella..... 119
- gastritis 30, 124
- Geopathy 93
- Giardia lamblia..... 140
- Glucan.....116, 127, 131, 137, 156, 165
- Glucan+ 18, 78, 107
- Glutathione..... 58
- gluten..... 39, 82, 101
- goiter 36, 58
- Grapefruit seed extract 101
- Griffonia..... 33, 123, 148

H

- hair brittle, fragile..... 36
- hair loss..... 36
- hardenings 57, 58
- hay fever 27, 89
- HEAL 23
- heartburn..... 70, 124, 146
- Heartworm 147, 148
- heaviness of limbs 32
- heaviness of the limbs 28
- heavy metal load 39
- heavy metals15, 42, 109, 147, 148, 164
- heavy-hearted mood 32
- hemorrhoids 67, 141
- Hepatitis 126
- Herpes 116, 130, 136
- histamine..... 64
- hormone system..... 49
- hospital germ..... 151

- House dust mite.....80
- Houttuynia. 18, 78, 107, 116, 127, 131, 133, 137, 156, 157, 165
- hyperacidity 124
- hypersomnia 33
- hypothyroidism.. 28, 31, 32, 34, 35, 36, 37, 40, 48

I

- immune system 11, 17, 19, 77, 97, 115, 117, 132, 133, 134, 136, 148, 165
- immunodeficiency 151
- incised wounds 151
- inflammation 27, 43
- inflammation of the breast..... 152
- inflammation tendency..... 62
- Influenza virus..... 136
- Influenza-virus H1N1 156
- insomnia 17, 23, 30, 32
- Intermittent fasting 55
- intestinal flora improvement..... 64
- intestinal pockets..... 105
- irritability 23, 32, 170
- irritable cough..... 75

J

- Juglandis 58, 90, 118, 120, 135
- jumpiness..... 23, 32

K

- Keloids 93
- kidney detoxification 71

L

- L'Glutathion 40
- lack of inner warmth..... 66
- lack of motivation 36
- lack of vital heat..... 58
- Lact+ 113, 124
- L-Arginin & L-Ornithin+ 92, 109
- L-Arginine & L-Ornithine+ 155

- Laterality..... 93
- L-Carnitin..... 52
- L-Cysteine 82
- Lecithin+ 139
- Leishmania donovani..... 84
- lethargy 29, 36
- L'Glutathione 38
- Lino+..... 139, 150
- Lipo-Glutathion Kombi+..... 52
- liver exhaustion 64
- liver fluke..... 119
- losing weight48, 50, 54, 55, 122
- loss of appetite..... 33
- loss of strength 28
- Lugol..... 38, 40
- lung..... 79
- lung function 69, 75
- lung meridian 79
- Lymph meridian..... 151
- lymph nodes 105

M

- Mag+ 139
- Mag-Citrat+92, 125, 139, 150
- Magnesium-Citrat+..... 120
- Mannasicht+..... 46
- Mannayan Glucan..... 127, 131
- mastitis 152
- Menstrual Disorder 150
- menstrual periods irregular..... 36
- meridian . 25, 28, 29, 32, 33, 35, 42, 43, 44, 49, 50, 57, 58, 94, 104, 105, 106, 110, 113, 119, 169, 172
- metabolic blockade 48
- metabolic disorders..... 30
- microcurrents 26
- middle ears..... 105
- Mineral salt. 14, 29, 30, 33, 52, 56, 120, 124, 125, 129, 160
- Mineralvit Gold....14, 56, 109, 129, 155
- Mites 149
- mitochondria26, 35, 45, 51
- Mitochondria..... 35, 51
- Morbus Menière..... 164

- MRSA 151
- Multi-resistant germs 151
- multi-resistant staphylococcus aureus strains 151
- Muscle disease 152
- muscle weakness 36
- My Glucofriend+ 38, 40, 52, 56
- Mycobacteria..... 39
- myxoedema 36

N

- nails brittle..... 36
- need for sleep increased 36
- neoplasms 57, 58
- nerve pain..... 53
- nightmares..... 32
- nitrosative stress 51, 53
- Nocardia asteroides..... 84
- numbness 53

O

- obesity 53
- Oligo+ 125
- Omega+ 125
- Oregano oil 103, 167
- Ornithonyssus..... 149
- otitis..... 129, 164
- otitis media 129
- overacidified stomach 70, 124

P

- pain in the throat..... 75
- palpitations..... 23
- Pancreas fluke 108, 154
- Papain.....58, 80, 82, 118, 119, 135
- Papain cure58, 80, 82, 118, 119, 135
- paraesthesia 53
- *parasympathetic nervous system*..... 23
- pharynx..... 151
- phlegm blockades..... 50
- phlegm in the throat..... 75
- pinhole glasses 47

- pneumonia 152
- poisoning 32, 114
- Power B+ 52, 56, 125, 133
- Power Jod+ 109, 123
- Poweriod+ (iodine) 38
- PowerJod+ 40
- prostate conditions..... 73
- protein intolerances 72
- protein metabolism 64
- pyomyositis..... 152

Q

- Q10+ 92, 123, 125

R

- Radioactivity 93
- rage, suppressed..... 33
- Rascal..... 90, 118, 135
- reflexes slowed..... 36
- Reg+ 107, 114, 125, 139
- respiratory constriction 69
- restlessness 23, 32, 33, 171
- roundworm..... 81
- Roundworms 79, 80, 81, 98, 140

S

- sadness 32
- Salmonellae 85
- Samento 18, 19, 58, 78, 89, 97, 103, 107, 116, 127, 131, 133, 137, 156, 157, 165
- Sarcoptes scabiei 149
- Scars 93
- Selenium 38, 58
- sepsis 152
- shallow breathing 69
- shortness of breath 62, 69, 141
- sinuses 18, 105, 129
- skin cool and pale dry 36
- skin dry 36
- skin rashes 58
- sleep disorders 33

- slowing down of the metabolism 49
- solvents..... 21, 42
- speech slow, slurred 36
- spine 65
- Staphylococci 151
- Staphylococcus 128
- Staphylococcus aureus 84, 151
- Stevia 19, 97
- stiffness..... 33, 36
- stomach deacidification..... 63
- Streptococcus 128
- Strongyloides 85, 147
- suffocation 69
- sugar metabolism 49
- swallowing difficulties..... 36
- swelling of the lymph nodes 58
- swellings 58

T

- Takuna ..18, 78, 81, 107, 116, 127, 131, 133, 137, 156, 165
- Tapeworm..... 90
- teeth 105
- tension in the body..... 23
- throat symptoms 36
- thyroid function 28, 35, 37, 39, 55
- tightness in the chest..... 23
- tightness in the throat 23
- tightness of the throat 33, 62
- **tingle threshold** 24
- tingling 53
- tingling sensation..... 128
- tiredness 13, 14, 28, 29, 40
- tissue compaction..... 57
- tongue thickened..... 36
- tonsillitis 75
- tonsils..... 105
- toxic shock syndrome 152
- Toxoplasma..... 158
- Toxoplasmosis 39
- Trichinella 119, 164
- Trichomonas 98, 99, 119, 158
- Tuberculosis..... 80
- tumors 152

U

- ulcers 57, 58, 124
- unspecific immune system 77
- upper abdominal complaints..... 64
- upper abdominal congestion..... 70
- Urovit..... 159

V

- vaccinations..... 26, 27, 51
- vagus nerve 23
- Vermella 123, 141
- virus 78
- Vit C+ 18
- vital force..... 49, 178
- Vitamin B aktiv+ 52, 56
- Vitamin C 58
- Vitamin C+ 18, 38, 40, 114, 129
- Vitamin D3 & K2 Ultra+ 97, 116, 133
- Vitamin D3 intensiv+ 52, 97, 133
- Vitamin D3+..... 56, 58, 78
- Vitamin D3+K2 4000 IU 29

- Vitamin D3+K2 Ultra+ .. 18, 19, 30, 107, 127, 131, 137, 157, 165
- Vitamin E Komplex+..... 92
- voice hoarse, deep..... 36
- voice raspy..... 36
- vomiting..... 36, 66
- vomiting reflex..... 36

W

- weakness of memory 36
- weight gain 36, 51
- Wormwood..... 120

Z

- Zinc.. 18, 46, 47, 52, 116, 131, 137, 157, 165
- Zink+ 18, 78, 86, 107, 109, 114, 116, 127, 131, 137, 157, 159, 165
- zoonosis..... 151
- Zym+ 146

Recommended literature

A. E. Baklayan:

- Gentle Healing with Harmonic Waves – simply zap your Health Problems away
- Gentle Self-healing with Harmonic Waves – a practical Manual
- The Harmonical Frequency System according to Baklayan – Fundamentals (available in German, English and Polish)
- Asthma
- Parasites - The hidden Cause of many Diseases
- Cholesterol – Shock and the Alternative
- Nichtraucher jetzt werden (Becoming a non-smoker now, German)
- Cancer – Therapy and Research by A.E. Baklayan, German lecture

Academy of Harmonical Frequency Procedure

- Frequency Compendium II – A compendium of frequencies according to Rife und Clark

Dr. Hulda Clark

- The Cure for all Diseases
- The Cure for all advanced Cancers

Stephan Wiede

- Gentle lymphatic drainage with the Diamond Shield
- On the Curative Power of Vegetables

Tamara Lebedewa

- Krebserreger entdeckt (“Carcinogens discovered”, German)

Masthead

Institute for Bioenergetic Research

Rue de Damas, Imm. Paladin, 4. Stock
Beirut – Baabda
Lebanon

Adresses

Alan E. Baklayan

Natural health professional
Unterer Anger 16, 80331 Munich, Germany
Tel.: +49 89-260 92 27, Fax: +49 89-260 261 72
www.heilpraktiker-bioresonanz-muenchen.de
E-Mail: praxis@baklayan.de
www.facebook.com/heilpraktiker.baklayan

Naturopath Baklayan holds lectures for experienced therapists concerning mycoses, viruses and heavy metal detoxication als well as special topics like cancer and parasites.

Additional information concerning resonance therapy and Zapper:

www.diamondshieldzapper.com
www.healingfrequency.com
harmonikalischefrequenzen.de/en

Find the interview series with Hp Baklayan concerning frequency therapy, borreliosis, heavy metal detoxication, etc. and detailed instruction videos for the easy usage of the Diamond Shield Zapper IE EMS on www.youtube.com (search for “Baklayan”)

t.me/DiamondShieldGruppe The German Telegram-Diamond Shield Group for informations and experience exchange

www.youtube.com/@healingwithfrequency Zapper channel from Brigitte with tutorials, zapper talk, etc. in German and English

